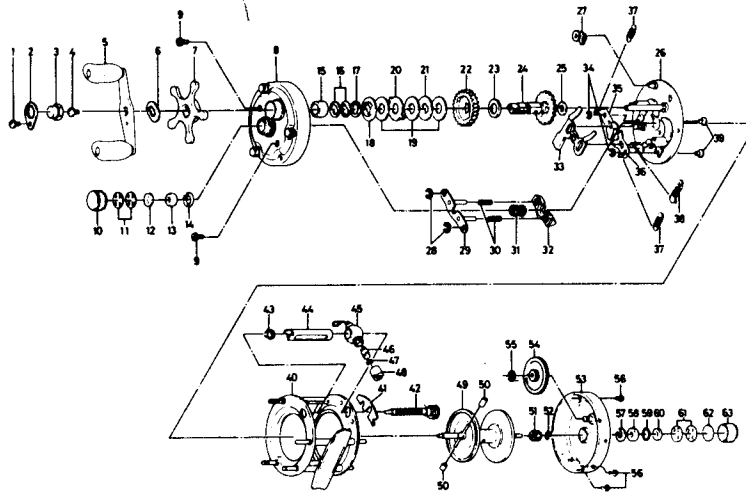


BAITCASTING REEL

Millionaire M3R



Key No.	Parts No.	Parts Name	Key No.	Parts No.	Parts Name
1	353-8301	Handle nut plate screw	33	780-9601	Clutch lever
2	040-3201	Handle nut plate	34	320-8202	Clutch ret. ring
3	341-5801	Handle nut	35	040-4701	Clutch stopper plate A
4	353-0701	Handle screw	36	040-4801	Clutch stopper plate B
5	747-1701	Handle	37	142-8503	Set plate spring A
6	150-9001	Handle washer	38	142-8502	Set plate spring B
7	550-3101	Star drag	39	121-6801	Set plate screw
8	780-9413	Right side cover	40	780-9902	Frame
9	353-1701	Right side cover screw	41	151-4111	Worm shaft lock arm
10	342-0801	Right spool cap	42	710-7711	Worm shaft
11	373-7502	Bearing metal ret. washer	43	021-7201	Shield bush
12	320-4101	Bearing metal retainer A	44	634-6111	Worm shield
13	634-5311	Bearing metal	45	781-0201	Line guide
14	320-6501	Bearing metal ret. ring	46	121-4211	Line guide pin
15	501-8701	Spacing sleeve	47	375-0800	Line guide washer
16	150-8901	Spring washer	48	341-5901	Line guide nut
17	373-7803	Drag washer A	49	731-2901	Spool
18	376-0001	Drag washer B	50	500-8011	Brake collar
19	374-9305	Drag washer C	51	402-2001	Spool gear
20	375-8701	Drag washer D	52	320-4202	Spool gear ret. ring
21	374-9401	Drag washer E	53	781-0324	Left side cover
22	413-9211	Drive gear	54	413-0001	Cog wheel
23	374-9303	Gear shaft washer A	55	320-8002	Cog wheel ret. ring
24	725-4611	Gear shaft	56	352-4221	Left side cover screw
25	373-7611	Gear shaft washer B	57	320-6501	Bearing metal ret. ring
26	780-9501	Set plate	58	634-5311	Bearing metal
27	770-0301	Anti-reverse claw	59	B05-5201	"O" ring
28	320-8002	Pinion yoke guide plate ret. ring	60	375-2401	Bearing metal retainer B
29	780-9701	Pinion yoke guide plate	61	373-7502	Bearing metal ret. washer
30	143-9311	Pinion yoke spring	62	374-7221	Rubber washer
31	402-9502	Pinion gear	63	342-1001	Left spool cap
32	635-9201	Pinion yoke			