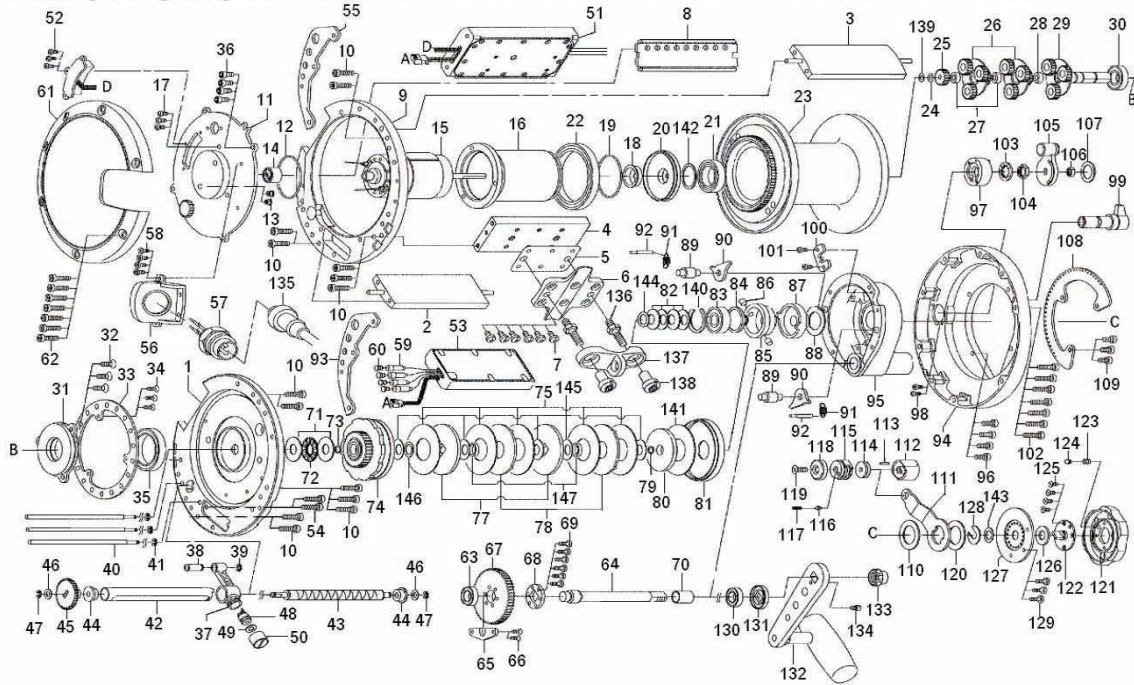


**MARINEPOWER 3000**



Key No.	Parts No.	Parts Name	Key No.	Parts No.	Parts Name	Key No.	Parts No.	Parts Name
1	G43-1401	R/S RING	50	G43-8601	PAWL CAP	100	G44-2401	CLICK LEVER RET
2	G43-1501	PALMING PLT A	51	G43-0602	IC MODULE	101	351-6601	CLICK LEVER RET SCREW
3	G43-1502	PALMING PLT B	52	352-2506	SPOOL SENSOR SCREW	102	G50-6201	R/S PLT SCREW
4	G43-1801	STAND PLT A	53	G53-4101	POWER MODULE	103	F28-5901	POWER LEVER WASHER
5	G44-4401	STAND PLT B	54	G50-6301	POWER MODULE SCREW	104	G13-9601	POWER LEVER NUT A
6	G43-1901	STAND	55, 93	G43-8901	IC PROTECTOR PLT	105	G44-2501	POWER LEVER
7	G43-2001	STAND SCREW	56	G43-9001	RECEPTACLE HOLDER	106	342-4004	POWER LEVER NUT B
8	G43-2101	FINGER GUARD	57	G43-9101	RECEPTACLE	107	F43-0002	POWER LEVER COVER
9	G43-2201	L/S RING	58	G16-0101	RECEPTACLE HOLDER SCREW	108	G44-3002	DRAG LEVER PLT
10	G50-6301	RING PLT SCREW	59	F68-2001	POWER CORD COVER	109	G43-7401	DRAG LEVER PLT SCREW
11	G43-2402	LEFT SET PLT	60	G68-2301	POWER MODULE CORD COVER	10, 120	K30-0801	DRAG LEVER WASHER
12	F59-5801	MOTOR HOLDER O RING	61	G43-9301	L/S PLT	111	G44-3401	DRAG LEVER
13	G43-7701	MOTOR CORD COVER	62	G50-6201	L/S PLT SCREW	112	G44-3501	DRAG LEVER METAL
14	G43-3901	MOTOR METAL	63	G43-9402	BALL BEARING E	113	G52-0401	DRAG LEVER METAL PIN
15	G43-4202	MOTOR	64	G43-9501	DRIVE SHAFT	114	G44-3601	DRAG LEVER METAL WASHER
16	G43-4701	MOTOR HOLDER	65	G43-9601	DRIVE SHAFT RET	115	G44-3701	DRAG LEVER COLLAR
17	G43-7401	MOTOR HOLDER SCREW	66	351-8903	DRIVE SHAFT RET SCREW	116	F28-8001	DRAG LEVER CLICK PIN
18	G43-4901	MOTOR HOLDER SHIELD	67	G43-9701	DRIVE GEAR	117	G29-4201	POWER LEVER SPRING
19	G50-7101	MOTOR HOLDER PLT	68	G43-9801	DRIVE GEAR PLT	118	G44-3801	DRAG LEVER CAP
20	G50-1101	BALL BEARING A	69	351-6413	DRIVE GEAR SCREW	119	G51-5201	DRAG LEVER SCREW
21	G43-4801	BALL BEARING B	70	G43-9901	DRIVE SHAFT BUSHING	121	G44-4101	PRE-SET DRAG KNOB
22	G43-5301	SPOOL	71	G44-5601	DRAG HOLDER WASHER	122	G44-4201	PRE-SET METAL
23	G50-6401	SPOOL GEAR WASHER A	72	G44-5701	DRAG HOLDER BEARING	123	K30-2601	PRE-SET DRAG SPRING
24	G43-5801	SPOOL GEAR A	73, 79	F65-7801	O RING	124	K30-2501	PRE-SET DRAG PIN
25	G53-7701	SPOOL GEAR B	74	G44-0001	DRAG HOLDER	125	E13-4503	PR-SET METAL SCREW
26	G56-1901	SPOOL GEAR BUSHING A	75	G44-0401	DRAG WASHER A	126	G44-4001	PRE-SET METAL WASHER
27	G56-1801	SPOOL GEAR BUSHING B	77	G44-0601	KEY WASHER	127	G44-4301	COVER PLT
28	G43-6501	SPOOL GEAR C	78	G44-0701	EARED WASHER	128	K30-2201	DRAG LEVER RET
29	G59-7101	BALL BEARING C	80	G44-0901	DRAG COLLAR	129	351-6413	COVER PLT SCREW
30	G43-7001	SPOOL PLT	81	G44-0801	DRAG COLLAR SHIELD	130	G43-9402	BALL BEARING G
31	G43-7101	SPOOL PLT SCREW	82	G44-1001	DRAG SPRING WASHER A	131	G44-4501	DRIVE SHAFT CAP
32	G43-7201	CLICK PLT	83	B88-7801	BALL BEARING F	132	G51-6601	HANDLE
33	E29-3001	CLICK PLT SCREW	84	G56-2301	ECCENTRIC CAM SCREW	133	G44-5101	HANDLE NUT
34	G43-7301	BALL BEARING D	85	G56-2201	SLEEVE	134	G21-8201	HANDLE NUT SCREW
35	G43-7401	LEFT SET PLT SCREW	86	G50-0701	ELECTRIC CAM PIN	135	F04-2805	ELECTRIC POWER CORD
36	G43-7601	LINE GUIDE	87	G44-1101	ECCENTRIC CAM	136	G44-5301	CLAMP BOLT
37	G43-7801	LEVEL WIND COLLAR	88	K30-0801	ECCENTRIC CAM WASHER	137	K30-9201	ROD CLAMP
38	F67-3501	LEVEL WIND COLLAR RET	89	G44-1201	A/R PAWL PIN	138	G44-5401	CLAMP NUT
39	G43-8001	LEVEL WIND POST	90	G44-1301	A/R PAWL	139	375-3005	SPOOL GEAR WASHER B
40	G27-0601	LEVEL WIND POST RET	91	G44-1401	A/R PAWL SPRING	140	G56-2401	DRAG RING
41	G43-8101	WORM SHIELD	92	G44-1501	A/R PAWL SPRING PIN	141	G56-2001	DRAG COLLAR WASHER
42	G43-8201	WORM SHAFT	94	G44-1601	R/S PLT	142	G58-1700	SPOOL BEARING WASHER
43	G43-8301	WORM SHAFT BUSHING	95	G44-1701	RIGHT SET PLT	143	371-2824	COVER PLT WASHER
44	G43-8401	WORM SHAFT GEAR	96	G43-2001	RIGHT SET PLT SCREW	144	B27-0706	DRAG ADJ WASHER
45	373-2702	WORM SHAFT WASHER	97	G44-1801	POWER LEVER COLLAR	145	G62-5301	DRAG SPRING WASHER B
46	320-1402	WORM SHAFT RET	98	351-1106	POWER LEVER COLLAR SCREW	146	B27-0707	DRAG WASHER B
47	G43-8501	LINE GUIDE PAWL	99	G44-2001	CLICK LEVER	147	G62-4101	DRAG WASHER COLLAR
48	373-2701	LINE GUIDE WASHER						