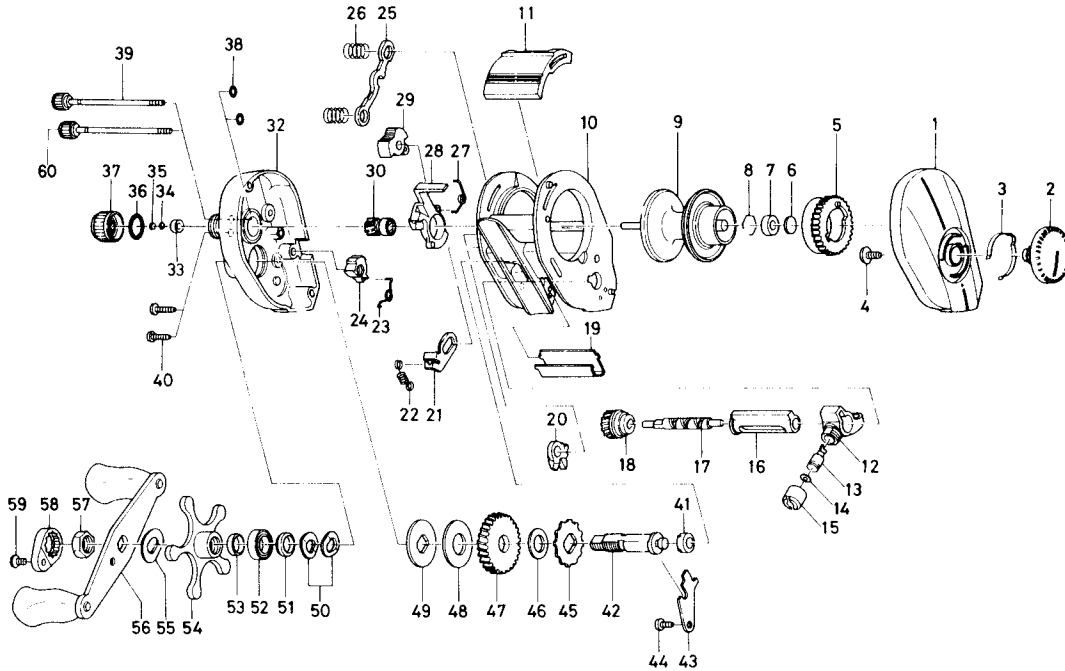


BAITCASTING REEL MA15L-3B



Key No.	Parts No.	Parts Name	Key No.	Parts No.	Parts Name
1	E 28-5003	Right side plate	32	E 28-4808	Left side plate
2	E 23-9702	Brake adjusting knob	33	E 34-2401	Bushing A
3	B 74-7702	Brake click spring	34	E 16-9201	Spool adjusting cap metal
4	E 03-7801	Brake adjusting knob screw	35	E 17-0501	Spacer B
5	E 23-9501	Magnet holder	36	171-5201	"O" ring A
6	375-7400	Spacer A	37	E 23-8401	Cast control cap
7	B 35-8601	Ball bearing A	38	B 85-3101	"O" ring B
8	B 42-1601	Bearing retainer	39	B 91-1708	Left side plate screw A
9	E 34-4701	Spool assembly	40	E 13-0502	Set plate screw
10	E 35-2402	Frame assembly	41	B 55-0301	Bushing B
11	E 28-3702	Clutch lever	42	E 23-7501	Drive shaft
12	E 16-6301	Line guide	43	E 23-7601	Drive shaft retainer
13	121-4212	Line guide pawl	44	B 83-4402	Drive shaft retainer screw
14	375-4100	Line guide washer	45	E 32-7701	Anti-reverse ratchet
15	342-4801	Pawl cap	46	375-7103	Drive shaft washer
16	E 28-4701	Level wind guard	47	E 20-6101	Drive gear
17	E 28-4601	Worm shaft	48	B 36-0202	Drag washer
18	E 20-6001	Worm shaft gear	49	B 36-0301	Key washer
19	E 31-0301	Line guard	50	150-8901	Drag spring washer
20	E 23-8001	Anti-reverse pawl	51	E 20-8501	Spacing sleeve A
21	E 28-3901	Clutch trip plate	52	E 15-4001	Ball bearing B
22	E 30-6001	Clutch trip plate spring	53	B 97-4901	Spacing sleeve B
23	E 30-9601	Anti-reverse lever spring	54	B 86-4202	Star drag
24	E 30-9501	Anti-reverse lever	55	150-9001	Friction washer
25	E 23-7701	Yoke	56	E 24-0403	Handle assembly
26	E 16-7101	Yoke spring	57	B 43-3601	Handle nut
27	E 28-4101	Clutch cam spring	58	B 43-3903	Handle nut plate
28	E 28-4001	Clutch cam	59	351-1803	Handle nut plate screw
29	E 24-9101	Flipping selector	60	B 91-1709	Left side plate screw B
30	E 31-0101	Pinion gear			