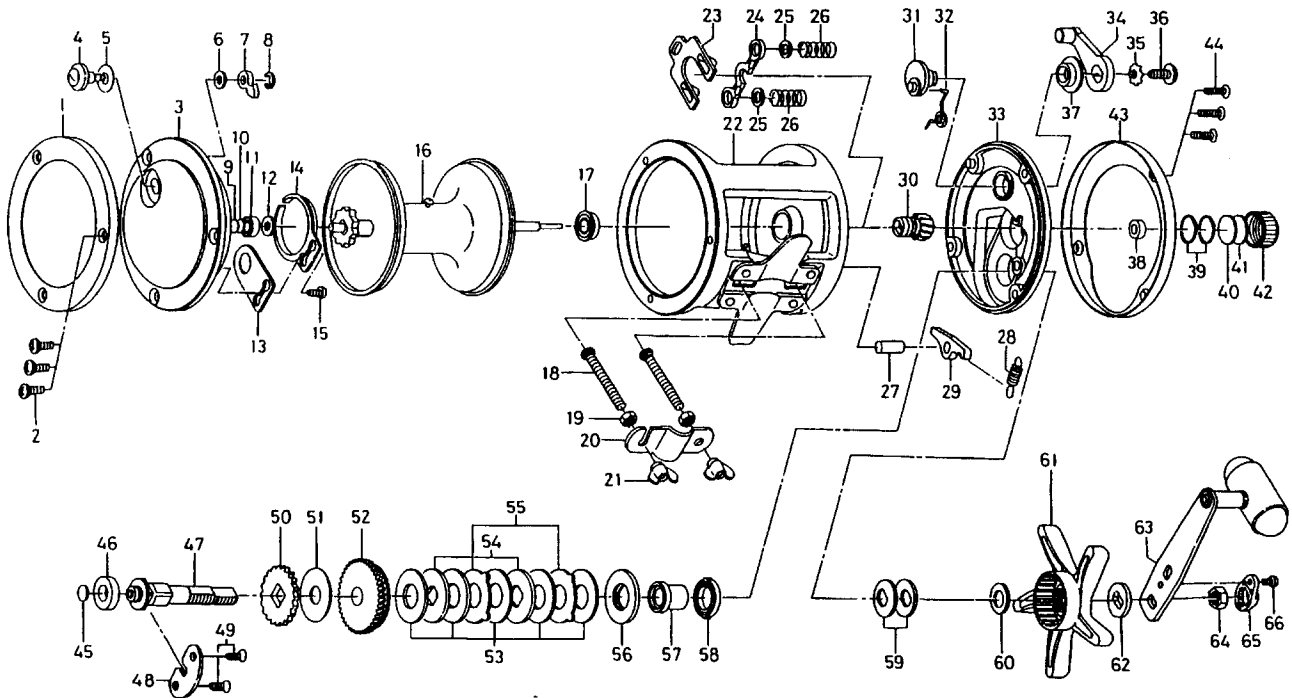


CONVENTIONAL REEL

SEALINE 40HSD / 50HSD



Key No.	Parts No.	Parts Name
1	G08-5801	L/S OUTER RING
2	G12-1801	L/S PLT SCREW
3	G08-5402	L/S PLT
4	541-6501	CLICK BUTTON
5	375-9301	CLICK BUTTON WASHER
6	375-1101	CLICK PAWL WASHER
7	030-6222	CLICK PAWL
8	320-1402	CLICK PAWL RET
9	375-7404	BEARING WASHER A
10	375-7411	BEARING WASHER B
11	637-2101	BALL BEARING A
12	F13-2602	SPACER A
13	F13-1801	CLICK SPRING RET
14	160-7922	CLICK SPRING
15	351-7701	CLICK SPRING SCREW
16	G10-1501	SPOOL
17	G00-7601	BALL BEARING B
18	353-9801	CLAMP BOLT
19	341-9701	ROD BRACE NUT
20	041-5601	ROD BRACE
21	342-2111	CLAMP NUT
22	G10-1301	FRAME
23	G08-3401	YOKE PLT
24	G08-3501	YOKE
25	E03-7706	YOKE WASHER
26	F93-5201	YOKE SPRING
27	E30-7701	A/R PAWL PIN
28	F29-8801	A/R PAWL SPRING
29	B12-0702	A/R PAWL
30	G08-3601	PINION GEAR
31	G08-2801	CLUTCH CAM
32	F38-5801	CLUTCH SPRING
33	G08-2401	R/S PLT
34	782-5401	CLUTCH LEVER
35	160-8001	CLUTCH LEVER LOCK WASHER
36	363-5301	CLUTCH LEVER SCREW

Key No.	Parts No.	Parts Name
37	B35-2601	CLUTCH LEVER SCREW HOLDER
38	E28-0201	BUSHING A
39	B05-5201	O RING
40	375-7501	SPACER B
41	B17-5503	SPACER C
42	E31-5403	CAST CONTROL CAP
43	G08-2701	R/S OUTER RING
44	E31-7402	R/S PLT SCREW
45	F73-3501	DRIVE SHAFT WASHER A
46	B73-8001	BUSHING B
47	G08-3701	DRIVE SHAFT
48	F09-8401	DRIVE SHAFT RET
49	B39-5506	DRIVE SHAFT RET SCREW
50	G08-3801	A/R RATCHET
51	G08-3901	DRIVE SHAFT WASHER B
52	G10-7101	DRIVE GEAR
53	F79-6201	DRAG WASHER
54	G08-4201	KEY WASHER A
55	F79-6103	EARED WASHER
56	G08-4301	KEY WASHER B
57	G08-4401	GEAR SHAFT COLLAR
58	F86-0901	BUSHING C
59	E25-3501	DRAG SPRING WASHER
60	373-7807	SPACING SLEEVE
61	G11-6701	STAR DRAG
62	E25-3901	FRICTION WASHER
63	G08-4801	HANDLE
64	B86-2102	HANDLE NUT
65	E44-0001	HANDLE NUT PLT
66	351-1801	HANDLE NUT PLT SCREW

50HSD Special Parts

Key No.	Parts No.	Parts Name
16	G08-5601	SPOOL FRAME
22	G08-3101	FRAME