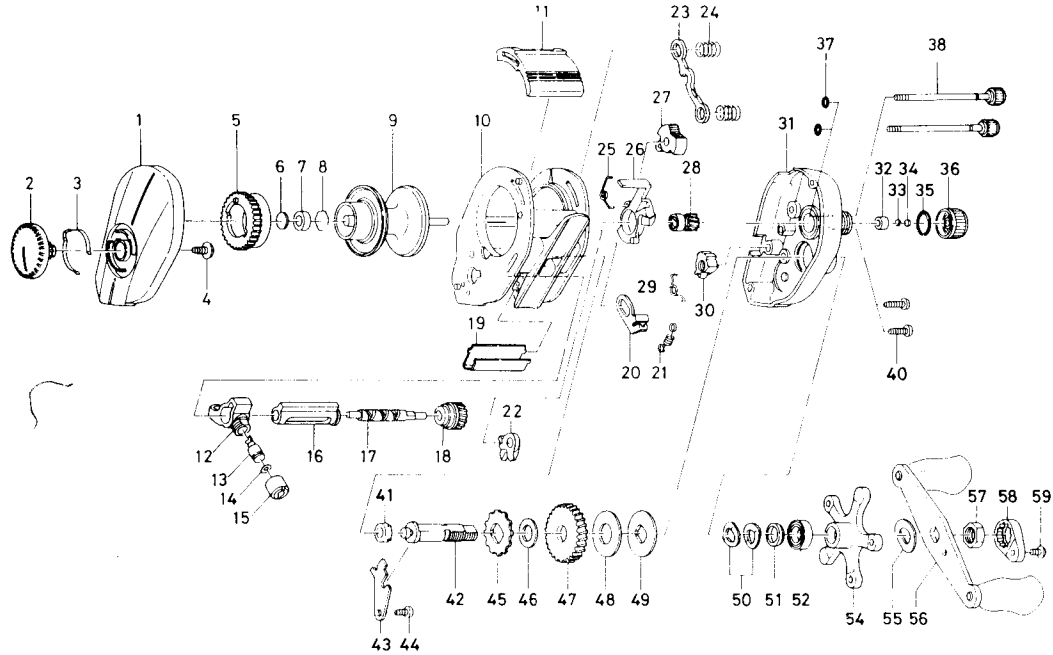


# BAITCASTING REEL HT1000F/1500F



Key No.	Parts No.
1	E23-8910
2	E23-9701
3	B74-7702
4	E03-7801
5	E23-9501
6	375-7400
7	B55-0301
8	B42-1601
9	E23-9901
10	E35-1901
11	E23-7101
12	E16-6301
13	121-4212
14	375-4100
15	342-4801
16	E23-8201
17	E24-7101
18	B99-2001
19	E24-9402
20	E23-7301
21	E30-6001
22	E23-8001
23	E23-7701
24	E16-7101
25	E24-9001
26	E23-7401
27	E24-9101
28	E23-7801
31	E23-8310
32	E34-2401
33	E16-9201
34	E17-0501
35	171-5201
36	E23-8401
37	B85-3101

Parts Name
Left side plate
Brake adjusting knob
Brake click spring
Brake adjusting knob screw
Magnet holder
Spacer A
Bushing A
Bearing retainer
Spool assembly
Frame assembly
Clutch lever
Line guide
Line guide pawl
Line guide washer
Pawl cap
Level wind guard
Worm shaft
Worm shaft gear
Line guard
Clutch trip plate
Clutch trip plate spring
Anti-reverse pawl
Yoke
Yoke spring
Clutch cam spring
Clutch cam
Flipping lever
Pinion gear
Right side plate
Bushing B
Spool adjusting cap metal
Spacer B
"O" ring A
Cast control cap
"O" ring B

Key No.	Parts No.	Parts Name
38	B91-1706	Right side plate screw
40	E13-0501	Set plate screw
41	B55-0301	Bushing C
42	E23-7501	Drive shaft
43	E23-7601	Drive shaft retainer
44	B83-4402	Drive shaft retainer screw
45	E32-7701	Anti-reverse ratchet
46	375-7103	Drive shaft washer
47	B36-0102	Drive gear
48	B36-0202	Drag washer
49	B36-0301	Key washer
50	150-8901	Drag spring washer
51	E20-8501	Spacing sleeve
52	E15-4001	Ball bearing
54	E23-8702	Star drag
55	150-9001	Friction washer
56	E30-5202	Handle assembly
57	B43-3601	Handle nut
58	B43-3902	Handle nut plate
59	351-1801	Handle nut plate screw

### HT1500F Special Parts

1	E23-8915
9	B28-5303
10	E35-2301
11	E28-3701
16	E31-2001
17	E28-4601
19	E31-0302
29	E31-1801
30	E30-9501
31	E23-8315
38	B91-1708

Parts Name
Left side plate
Spool assembly
Frame assembly
Clutch lever
Level wind guard
Worm shaft
Line guard
Anti-reverse lever spring
Anti-reverse lever
Right side plate
Right side plate screw