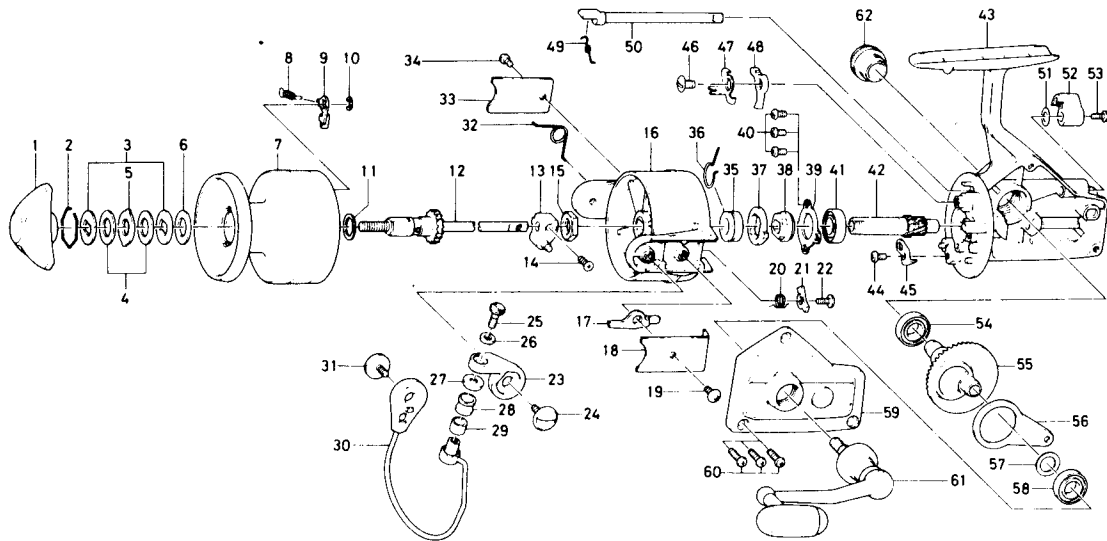


SPINNING REEL

GS-60XSC



KEY NO. 2 ~ 10

734-7901 SPOOL ASSEMBLY

Key No.	Parts No.	Parts Name	Key No.	Parts No.	Parts Name
1	000-8241	Drag knob	32	145-2001	Bail spring
2	170-4511	Drag washer retainer	33	801-4001	Bail spring cover
3	376-0101	Drag D washer	34	351-6101	Bail spring cover screw
4	372-6504	Disc washer	35	502-1301	Spring holder
5	375-5401	Drag A washer	36	145-2901	Anti-reverse claw spring
6	372-3004	Drag washer A	37	280-9701	Ratchet
* 7	734-8002	Spool	38	636-6711	Click gear
8	145-2101	Spool click claw spring	39	050-5101	Ball bearing ret. washer
9	807-8201	Spool click claw	40	351-6601	Ball bearing ret. washer screw
10	320-1402	Spool click claw retainer	41	635-5001	Ball bearing
11	372-9601	Spool washer	42	403-3301	Pinion gear
12	711-5801	Main shaft	43	701-7202	Body
13	637-4111	Oscillating support	44	351-6601	Cam kick plate screw
14	351-8901	Oscillating slider screw	45	041-8311	Cam kick plate
15	340-8301	Rotor nut	46	352-1102	Anti-reverse claw screw
16	202-1901	Rotor	47	041-9101	Anti-reverse claw plate
17	571-1201	Bail kick lever	48	111-9201	Anti-reverse claw
18	041-9201	Bail kick lever cover	49	144-0321	Anti-reverse cam spring
19	351-7701	Bail kick lever cover screw	50	461-5001	Anti-reverse cam
20	145-3001	Bail kick cam spring	51	373-2700	Anti-reverse lever washer
21	571-1101	Bail kick cam	52	541-7301	Anti-reverse lever
22	353-8201	Bail kick cam screw	53	352-2501	Anti-reverse lever screw
23	231-3501	Arm lever	54	636-6011	Ball bearing
24	363-5201	Arm lever screw	55	414-2901	Drive gear
25	363-3111	Bail screw	56	481-2701	Oscillating slider
26	375-1101	Bail washer	57	371-2800	Drive gear washer
27	501-2001	Roller collar	58	636-6011	Ball bearing
28	250-4501	Line roller	59	707-1502	Body cover
29	502-1401	Roller metal	60	351-5901	Body cover screw
30	725-8701	Bail	61	748-1201	Handle
31	363-5201	Bail holder screw	62	807-4703	Handle screw cap

*Not sold separately. See Special Assembly.