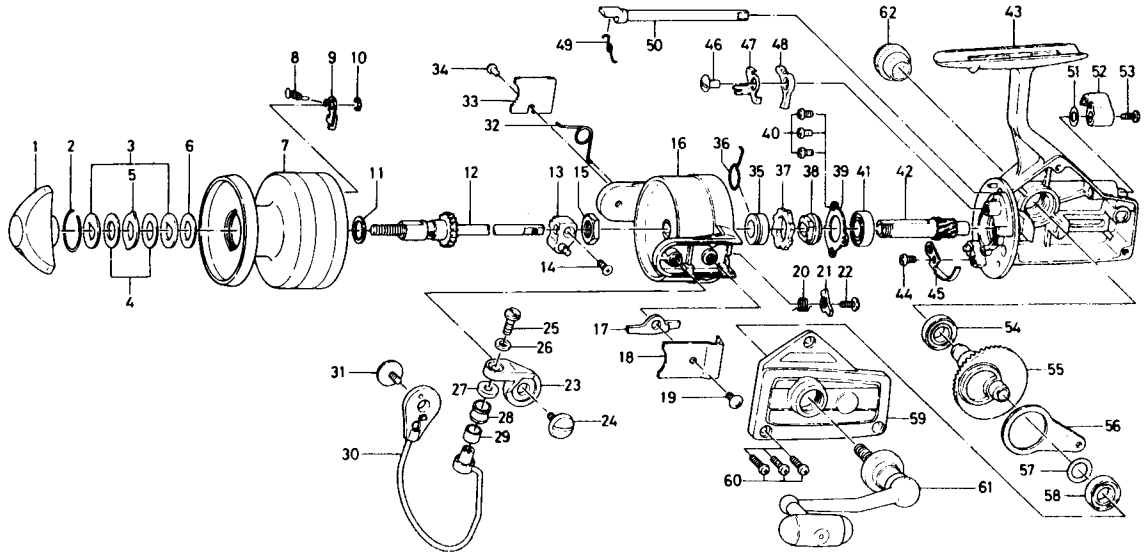


SPINNING REEL **GS-30X**



KEY 2 ~ 10
NO. 6-734-7701

SPPOOL ASSEMBLY

Key No.	Parts No.	Parts Name
1	740-4501	Drag knob
2	170-4601	Drag washer retainer
3	376-4001	Drag D washer
4	375-7802	Disc washer
5	375-8002	Drag A washer
6	375-7803	Drag washer A
*7	834-7802	Spool
8	145-2101	Spool click claw spring
9	B07-8201	Spool click claw
10	320-1402	Spool click claw retainer
11	376-3901	Spool washer
12	711-5701	Main shaft
13	637-3001	Oscillating support
14	351-8901	Oscillating slider screw
15	340-8301	Rotor nut
16	202-1801	Rotor
17	571-1001	Bail kick lever
18	B14-1801	Bail kick lever cover
19	351-7701	Bail kick lever cover screw
20	145-0701	Bail kick cam spring
21	571-1301	Bail kick cam
22	351-4701	Bail kick cam screw
23	231-3501	Arm lever
24	363-5201	Arm lever screw
25	363-3111	Bail screw
26	375-1101	Bail washer
27	501-2001	Roller collar
28	250-4501	Line roller
29	502-1401	Roller metal
30	725-8801	Bail
31	363-5201	Bail holder screw

Key No.	Parts No.	Parts Name
32	145-2001	Bail spring
33	041-8801	Bail spring cover
34	351-6101	Bail spring cover screw
35	502-1301	Spring holder
36	145-2901	Anti-reverse claw spring
37	280-9501	Ratchet
38	636-6711	Click gear
39	635-9901	Ball bearing ret. washer
40	351-6601	Ball bearing ret. washer screw
41	635-4801	Ball bearing
42	403-2801	Pinion gear
43	701-7002	Body
44	351-6601	Cam kick plate screw
45	B22-9901	Cam kick plate
46	352-1102	Anti-reverse claw screw
47	041-9101	Anti-reverse claw plate
48	111-9201	Anti-reverse claw
49	144-0321	Anti-reverse cam spring
50	B15-6403	Anti-reverse cam
51	373-2700	Anti-reverse lever washer
52	541-7301	Anti-reverse lever
53	352-2501	Anti-reverse lever screw
54	636-6011	Ball bearing
55	414-2302	Drive gear
56	481-2401	Oscillating slider
57	371-2800	Drive gear washer
58	636-6011	Ball bearing
59	707-1302	Body cover
60	351-5901	Body cover screw
61	B04-0701	Handle
62	B07-4703	Handle screw cap