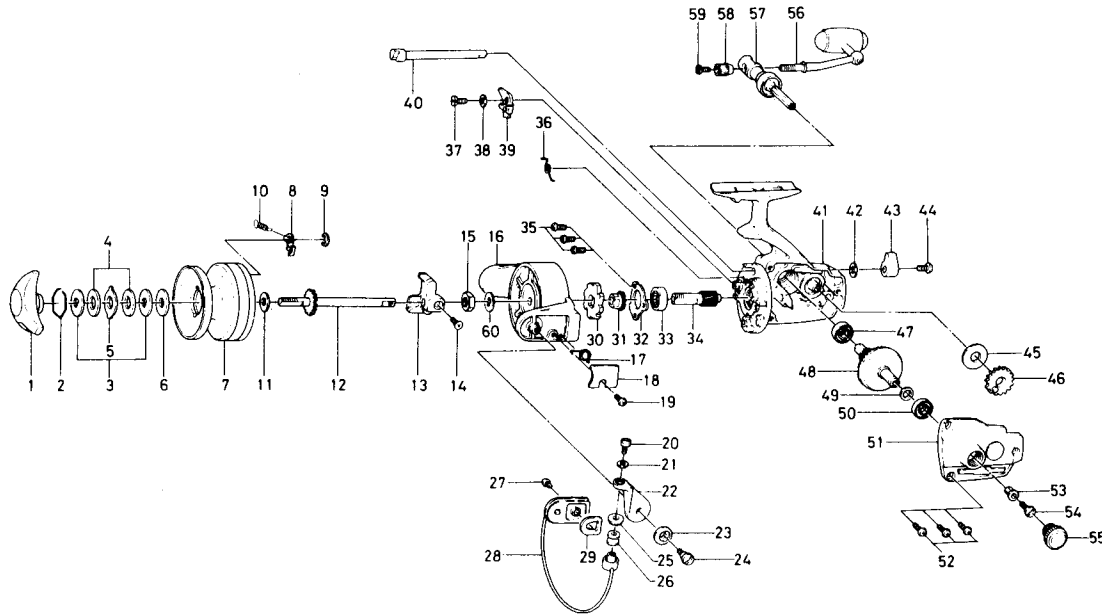


SPINNING REEL

GS-30



KEY NO. 2 ~ 10
6-733-1202

SPOOL ASSEMBLY

KEY No. 56 ~ 59
6-747-2102

HANDLE ASSEMBLY

Key No.	Parts No.	Parts Name
1	740-2601	Drag knob
2	170-4001	Drag washer retainer
3	373-2502	Drag D washer
4	374-2901	Disc washer
5	375-5301	Drag A washer
6	370-6901	Drag washer A
7	733-1303	Spool
8	B07-8201	Spool click claw
9	320-1402	Spool click claw retainer
10	145-2101	Spool click claw spring
11	374-9002	Spool washer
12	710-9123	Main shaft
13	481-0901	Oscillating slider
14	351-8901	Oscillating slider screw
15	340-8301	Rotor nut
16	201-7803	Rotor
17	143-5311	Bail spring
18	632-6411	Bail spring cover
19	351-1801	Bail spring cover screw
20	363-3111	Bail screw
21	375-1101	Bail washer
22	231-1901	Arm lever
23	130-3201	Bail holder cap
24	363-1901	Arm lever screw
25	501-2001	Roller collar
26	250-4321	Line roller
27	351-6601	Bail holder screw
28	725-5622	Bail
29	210-3111	Balancer
30	280-5301	Ratchet

Key No.	Parts No.	Parts Name
31	270-7011	Click gear
32	635-9901	Ball bearing ret. washer
33	635-4801	Ball bearing
34	402-9411	Pinion gear
35	351-6601	Ball bearing ret. washer scr
36	144-0321	Anti-reverse cam spring
37	363-3601	Anti-reverse claw screw
38	375-5200	Anti-reverse claw washer
39	770-0731	Anti-reverse claw
40	B15-6402	Anti-reverse cam
41	701-1302	Body
42	373-2700	Anti-reverse lever washer
43	541-6101	Anti-reverse lever
44	352-2501	Anti-reverse lever screw
45	374-6600	Oscillating gear washer
46	413-2212	Oscillating gear
47	636-6011	Ball bearing
48	413-9111	Drive gear
49	371-2800	Drive gear washer
50	636-6011	Ball bearing
51	706-7902	Body cover
52	351-6401	Body cover screw
53	501-8401	Handle screw holder
54	363-8611	Handle screw
55	363-4702	Handle screw cap
56	747-3311	Handle arm
57	747-3401	Handle stand
58	342-3301	Handle arm ret. nut
59	353-9101	Handle arm ret. nut screw
60	375-7701	Rotor washer