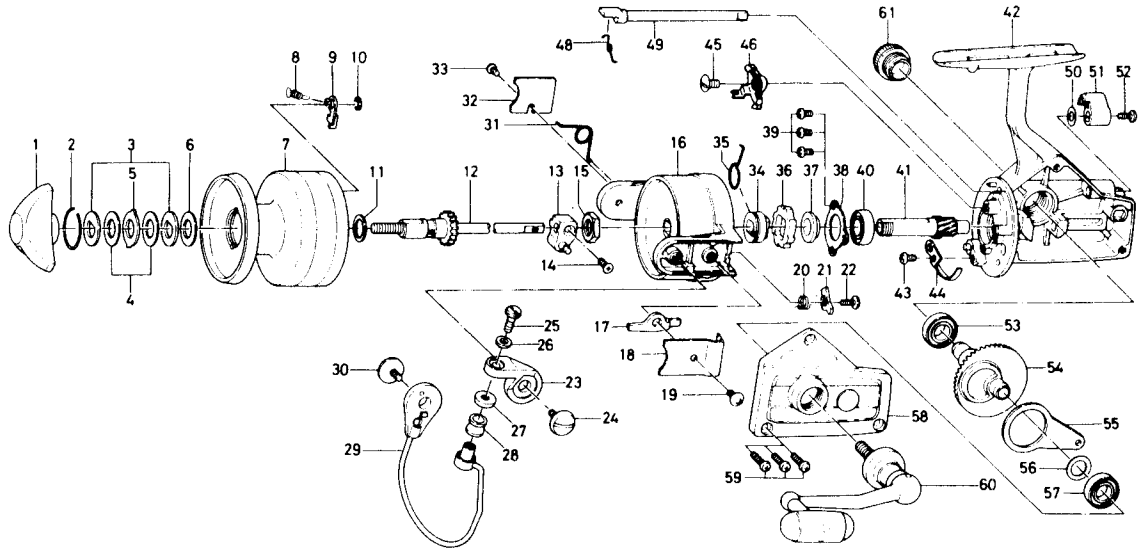


SPINNING REEL GS-20X



| Key No. | Parts No. | Parts Name | Key No. | Parts No. | Parts Name |
|---------|-----------|-----------------------------|---------|-----------|-------------------------------|
| 1 | 740-4501 | Drag knob | 31 | 145-2001 | Bail spring |
| 2 | 171-7701 | Drag washer retainer | 32 | 041-8801 | Bail spring cover |
| 3 | 376-4001 | Drag D washer | 33 | 351-6101 | Bail spring cover screw |
| 4 | 375-7802 | Disc washer | 34 | 502-1301 | Spring holder |
| 5 | 375-8002 | Drag A washer | 35 | 145-2901 | Anti-reverse claw spring |
| 6 | 375-7803 | Drag washer A | 36 | 280-9501 | Ratchet |
| 7 | 734-7102 | Spool | 37 | 636-6711 | Click gear |
| 8 | 145-2101 | Spool click claw spring | 38 | 635-9901 | Ball bearing ret. washer |
| 9 | B07-8201 | Spool click claw | 39 | 351-6601 | Ball bearing ret. washer scre |
| 10 | 320-1402 | Spool click claw retainer | 40 | 635-4801 | Ball bearing |
| 11 | 376-3901 | Spool washer | 41 | 403-2801 | Pinion gear |
| 12 | 711-5701 | Main shaft | 42 | 701-7003 | Body |
| 13 | 637-3001 | Oscillating support | 43 | 351-6601 | Cam kick plate screw |
| 14 | 351-8901 | Oscillating slider screw | 44 | B22-9901 | Cam kick plate |
| 15 | B10-5701 | Rotor nut | 45 | 352-1102 | Anti-reverse claw screw |
| 16 | 202-1612 | Rotor | 46 | B33-5601 | Anti-reverse claw |
| 17 | 571-1001 | Bail kick lever | 48 | 144-0321 | Anti-reverse cam spring |
| 18 | 041-8101 | Bail kick lever cover | 49 | B15-6403 | Anti-reverse cam |
| 19 | 351-7701 | Bail kick lever cover screw | 50 | 373-2700 | Anti-reverse lever washer |
| 20 | 145-0701 | Bail kick cam spring | 51 | 541-7301 | Anti-reverse lever |
| 21 | 571-0901 | Bail kick cam | 52 | 352-2501 | Anti-reverse lever screw |
| 22 | 351-4701 | Bail kick cam screw | 53 | 636-6011 | Ball bearing |
| 23 | 231-3501 | Arm lever | 54 | 414-2302 | Drive gear |
| 24 | 363-5201 | Arm lever screw | 55 | 481-2401 | Oscillating slider |
| 25 | 363-3111 | Bail screw | 56 | 371-2800 | Drive gear washer |
| 26 | 375-1101 | Bail washer | 57 | 636-6011 | Ball bearing |
| 27 | 501-2001 | Roller collar | 58 | 707-1303 | Body cover |
| 28 | 250-4321 | Line roller | 59 | 351-5901 | Body cover screw |
| 29 | 725-8513 | Bail | 60 | 748-0901 | Handle |
| 30 | 363-5201 | Bail holder screw | 61 | 363-4702 | Handle screw cap |

DAIWA INC. MADE IN JAPAN