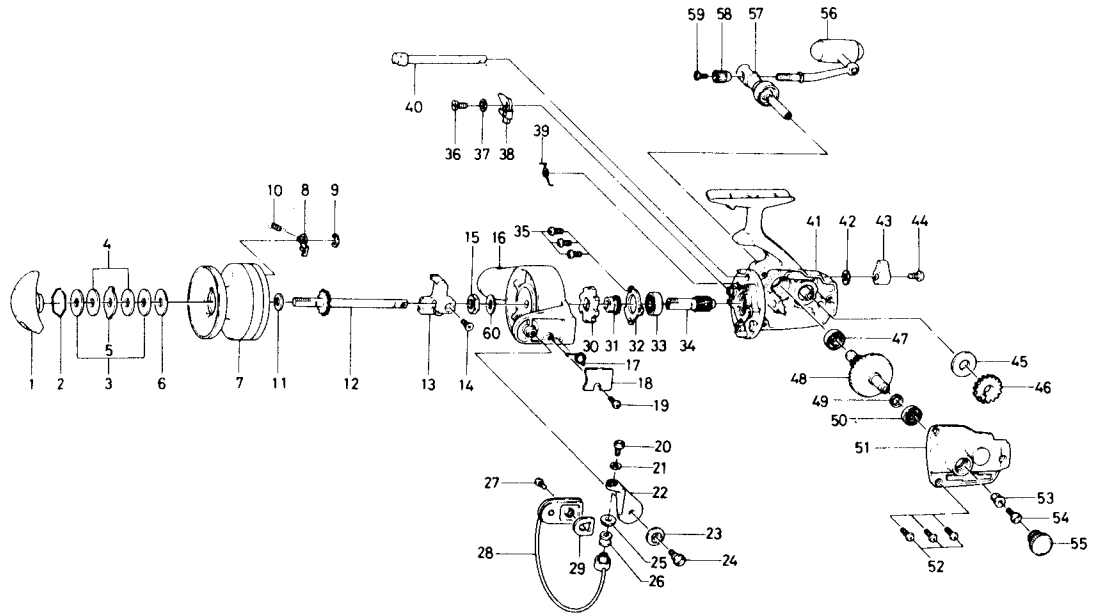


## SPINNING REEL

## GS-20



KEY NO. 2 ~ 9  
6-734-4501

### SPOOL ASSEMBLY

KEY NO. 56 ~ 59  
6-747-2102

### HANDLE ASSEMBLY

Key No.	Parts No.	Parts Name	Key No.	Parts No.	Parts Name
1	740-2601	Drag knob	31	270-7011	Click gear
2	170-4001	Drag washer retainer	32	635-9901	Bail bearing ret. washer
3	373-2502	Drag D washer	33	635-4801	Ball bearing
4	374-2901	Disc washer	34	402-9411	Pinion gear
5	375-5301	Drag A washer	35	351-6601	Bail bearing ret. washer screw
6	370-6901	Drag washer A	36	363-3601	Anti-reverse claw screw
7	734-4402	Spool	37	375-5200	Anti-reverse claw washer
8	B07-8201	Spool click claw	38	770-0731	Anti-reverse claw
9	320-1402	Spool click claw retainer	39	144-0321	Anti-reverse cam spring
10	145-2101	Spool click claw spring	40	B15-6402	Anti-reverse cam
11	374-9002	Spool washer	41	701-1301	Body
12	710-9123	Main shaft	42	373-2700	Anti-reverse lever washer
13	481-0901	Oscillating slider	43	541-6101	Anti-reverse lever
14	351-8901	Oscillating slider screw	44	352-2501	Anti-reverse lever screw
15	340-8301	Rotor nut	45	374-6600	Oscillating gear washer
16	201-7706	Rotor	46	413-2212	Oscillating gear
17	143-5311	Bail spring	47	636-6011	Ball bearing
18	632-6411	Bail spring cover	48	413-9111	Drive gear
19	351-1801	Bail spring cover screw	49	371-2800	Drive gear washer
20	363-3111	Bail screw	50	636-6011	Ball bearing
21	375-1101	Bail washer	51	706-7901	Body cover
22	231-1901	Arm lever	52	351-6401	Body cover screw
23	130-3201	Bail holder cap	53	501-8401	Handle screw holder
24	363-1901	Arm lever screw	54	363-8611	Handle screw
25	501-2001	Roller collar	55	363-4702	Handle screw cap
26	250-4321	Line roller	56	747-3311	Handle arm
27	351-6601	Bail holder screw	57	747-3401	Handle stand
28	725-5622	Bail	58	342-3301	Handle arm ret. nut
29	210-3111	Balancer	59	353-9101	Handle arm ret. nut screw
30	280-5301	Ratchet	60	375-7701	Rotor washer