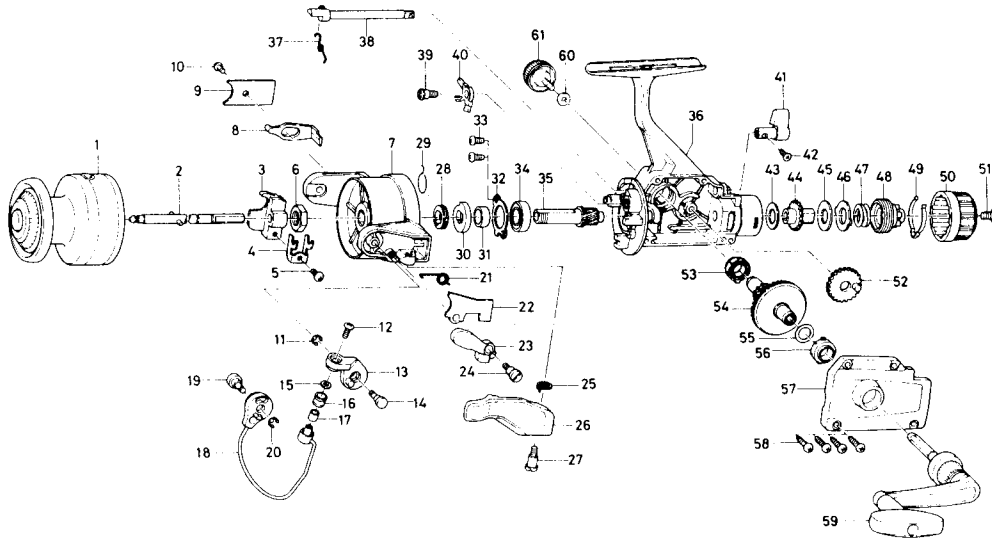


SPINNING REEL **GS1655/2055**



Key No.	Parts No.	Parts Name	Price Each	Key No.	Parts No.	Parts Name	Price Each
1	E00-4401	Spool	8.00	36	E00-2301	Body	8.80
2	B83-9801	Main shaft	1.75	37	144-0321	Anti-reverse cam spring	0.50
3	B64-0102	Oscillating slider	0.75	38	B83-6001	Anti-reverse cam	1.05
4	B49-2501	Oscillating slider retainer	0.50	39	B83-6301	Anti-reverse pawl screw	0.50
5	351-1804	Oscillating slider screw	0.35	40	B74-5501	Anti-reverse pawl	0.75
6	340-8301	Rotor nut	0.50	41	B63-8101	Anti-reverse lever	1.50
7	B82-1902	Rotor	8.75	42	B12-8201	Anti-reverse lever screw	0.50
8	B83-6701	Bail trip lever	0.75	43	B46-9504	Drag washer A	0.40
9	B76-9703	Bail trip cover	0.35	44	B76-9803	Click gear	0.35
10	B83-4402	Bail trip cover screw	0.35	45	373-3710	Drag washer B	0.60
11	320-5901	Bail arm screw retainer	0.40	46	B83-9501	Eared washer	0.40
12	B67-9302	Line roller screw	0.35	47	B98-2901	Drag coil spring	0.60
13	B67-4601	Bail arm	1.20	48	B77-0004	Drag screw	0.90
14	B83-3801	Bail arm screw	0.45	49	B77-0301	Drag washer spring	0.40
15	B55-4301	Line roller washer A	0.35	50	B83-9601	Drag knob	1.45
16	250-3921	Line roller	0.80	51	352-1105	Drag knob spring screw	0.70
17	B45-1501	Line roller bushing	0.40	52	B74-3701	Oscillating gear	0.55
18	B83-6501	Bail	3.70	53	B84-3901	Bushing	0.40
19	B83-4201	Bail trip cam screw	0.60	54	B83-6801	Drive gear	1.65
20	320-5901	Bail trip cam screw retainer	0.40	55	373-7800	Drive gear washer	0.35
21	B76-9101	Bail spring	0.45	56	B84-3901	Bushing	0.40
22	B83-6401	Bail spring cover	0.35	57	E00-2401	Side cover	6.00
23	B76-9301	Trigger plate	1.20	58	B83-5002	Side cover screw	0.40
24	B68-8801	Bail spring cover screw	0.80	59	E00-2501	Handle	5.50
25	B67-5201	Trigger spring	0.50	60	B92-4901	Handle lock washer	0.40
26	B67-5105	Trigger lever	2.10	61	E00-1801	Handle lock screw	0.50
27	B68-8802	Trigger screw	0.75				
28	B68-6401	Spring holder	1.10				
29	145-0901	Anti-reverse pawl spring	0.50				
30	B67-4301	Anti-reverse ratchet	0.85				
31	B83-6201	Spacing sleeve	0.40				
32	B35-6301	Bearing retainer	0.55				
33	B83-4402	Bearing retainer screw	0.35				
34	636-6011	Ball bearing	5.20				
35	B83-6101	Pinion gear	3.50				
				GS2055 Special Parts			
				1	E00-4501	Spool	8.00
				7	B82-2102	Rotor	8.90
				8	B83-7301	Bail trip lever	0.75
				18	B84-0201	Bail	3.70
				36	E00-2302	Body	13.75
				57	E00-2402	Side cover	6.00
				59	E00-2801	Handle	5.50