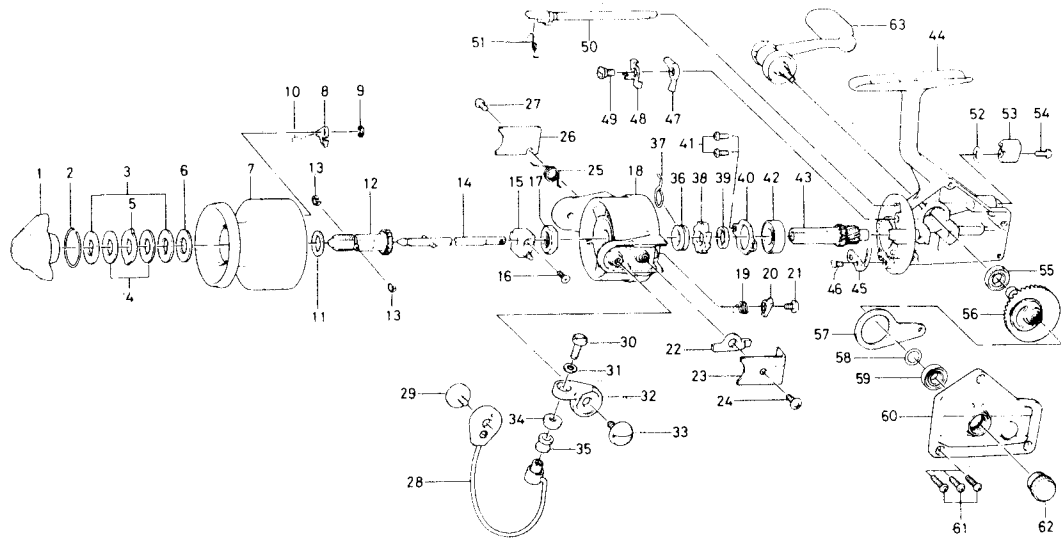




SPINNING REEL GS-13X



Key No.	Parts No.	Parts Name	Key No.	Parts No.	Parts Name
1	740-3311	Drag knob	33	363-5201	Arm lever screw
2	170-4601	Drag washer retainer	34	501-1601	Roller collar
3	374-4802	Drag D washer	35	250-4221	Line roller
4	373-3701	Disc washer	36	501-9901	Spring holder
5	373-3603	Drag A washer	37	145-0901	Anti-reverse claw spring
6	373-3704	Drag washer A	38	280-9001	Ratchet
7	733-5004	Spool	39	501-9801	Spacer
8	B07-5302	Spool click claw	40	321-0901	Ball bearing ret. washer
9	320-5901	Spool click claw retainer	41	351-0901	Ball bearing ret. washer s
10	144-1211	Spool click claw spring	42	635-4801	Ball bearing
11	375-5701	Spool washer	43	403-2201	Pinion gear
12	720-1721	Spool metal	44	701-4003	Body
13	151-7211	Spool metal leaf spring	45	B22-3101	Cam kick plate
14	711-4601	Main shaft	46	351-6601	Cam kick plate screw
15	637-0102	Oscillating support	47	111-8201	Anti-reverse claw
16	351-5311	Oscillating slider screw	48	041-7101	Anti-reverse claw plate
17	B10-5701	Rotor nut	49	363-9301	Anti-reverse claw screw
18	202-1031	Rotor	50	461-7104	Anti-reverse cam
19	145-0701	Bail kick cam spring	51	144-0321	Anti-reverse cam spring
20	571-0821	Bail kick cam	52	371-6903	Anti-reverse lever washer
21	354-0701	Bail kick cam screw	53	541-6801	Anti-reverse lever
22	B26-3101	Bail kick lever	54	353-4401	Anti-reverse lever screw
23	041-7221	Bail kick lever cover	55	637-5701	Ball bearing
24	351-7701	Bail kick lever cover screw	56	414-1312	Drive gear
25	145-1011	Bail spring	57	481-2101	Oscillating slider
26	041-7301	Bail spring cover	58	375-8500	Drive gear washer
27	351-7701	Bail spring cover screw	59	637-5701	Ball bearing
28	725-8111	Bail	60	706-9701	Body cover
29	363-5201	Bail holder screw	61	353-0001	Body cover screw
30	353-1811	Bail screw	62	B03-4803	Handle screw cap
31	375-1001	Bail washer	63	B15-8501	Handle
32	231-2901	Arm lever			

MULTI-SHAPE UPPER