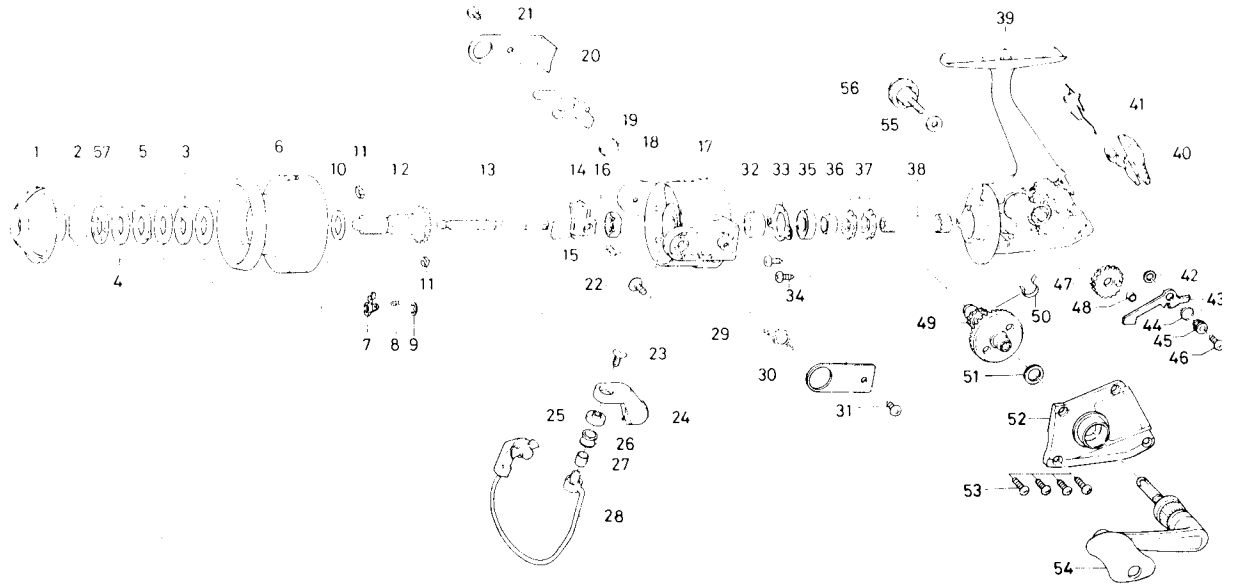


SPINNING REEL **GS13UL**



Key No. 1 ~ 12

E14-4001 Spool assembly

Key No.	Parts No.	Parts Name	Key No.	Parts No.	Parts Name
1	E14-0901	Drag knob	29	B61-8601	Bail spring
2	171-7701	Drag washer retainer	30	B61-8903	Bail spring cover
3	374-4802	Key washer	31	B61-7902	Bail spring cover screw
4	E14-3301	Drag washer A	32	E14-3101	Spacer A
5	373-3603	Eared washer	33	B45-6401	Bearing retainer
6	E14-3901	Spool (Deep Spool)	34	B83-4402	Bearing retainer screw
7	B07-5301	Click pawl	35	634-1301	Ball bearing
8	144-1211	Click spring	36	E14-3001	Spacer B
9	320-5901	Click retainer	37	E11-3501	Anti-reverse ratchet
10	E12-3501	Spool washer	38	E13-9501	Pinion gear
11	151-7211	Spool metal leaf spring	39	E14-3602	Body
12	E14-0701	Spool metal	40	E13-9101	Anti-reverse lever
13	E13-9901	Main shaft	41	B79-0101	Anti-reverse cam
14	E13-9601	Oscillating slider	42	E15-3101	Anti-reverse pawl washer
15	351-0311	Oscillating block screw	43	E13-9301	Anti-reverse pawl
16	341-9201	Rotor nut	44	E13-9401	Anti-reverse pawl spring A
17	B61-8504	Rotor	45	B95-9501	Anti-reverse pawl collar
18	B61-9101	Lever spring	46	B00-8601	Anti-reverse pawl screw
19	B61-9201	Bail trip lever	47	B59-1704	Oscillating gear
20	B61-9703	Bail trip cover	48	B59-1901	Oscillating gear collar
21	B61-7902	Bail trip cover screw	49	E14-3501	Drive gear
22	B01-7101	Bail arm screw	50	E13-9801	Anti-reverse pawl spring B
23	352-2503	Line roller screw	51	375-8500	Drive gear washer
24	E13-8801	Bail arm	52	E14-3701	Side cover
25	B45-1601	Line roller washer	53	E13-0502	Side cover screw
26	250-3921	Line roller	54	E09-4702	Handle assembly
27	B45-1501	Line roller bushing	55	E92-4901	Handle lock washer
28	E14-1101	Bail	56	E03-5502	Handle lock screw
			57	E15-4101	Drag washer B