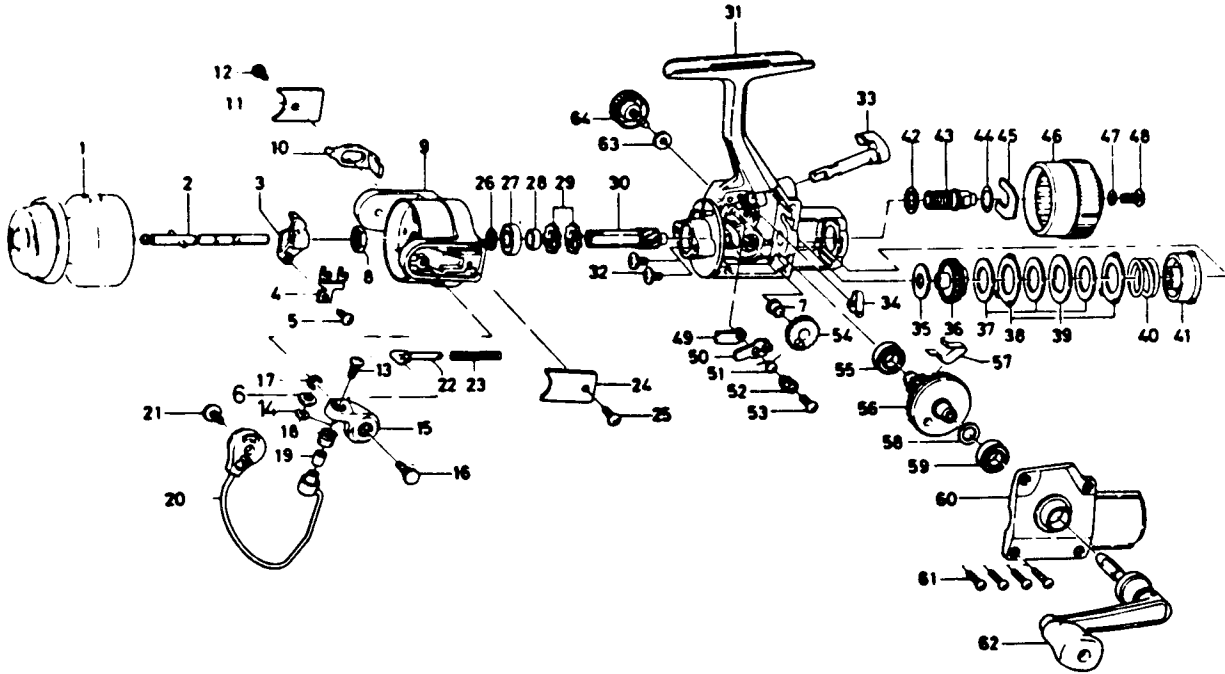


SPINNING REEL — GA1350T/ 1650T



Key

No.	Part No.	Part Name	Price
1	K11-5301	Spool assembly	15.00
2	K11-1401	Main shaft assembly	2.20
3	K11-1601	Oscillating slider	.70
4	K11-1701	Oscillating slider retainer	.70
5	351-0903	Oscillating slider screw	.45
6	B97-9801	Line roller washer A	.50
7	K11-4701	Oscillating gear collar	.50
8	B10-5701	Rotor nut	.65
9	K11-0202	Rotor	7.10
10	K11-1001	Bail trip lever	.50
11	E20-2401	Bailtrip cover	.60
12	B83-4401	Bail trip cover screw	.50
13	B67-9302	Line roller screw	.40
14	B55-4301	Line roller washer B	.40
15	K11-0401	Bail arm	.90
16	K11-2601	Bail arm screw	.85
17	320-5901	Bail arm screw retainer	.50
18	250-3921	Line roller	.75
19	B45-1501	Line roller bushing	.60
20	K11-0702	Bail	3.70
21	B84-2102	Bail trip cam screw	.50
22	E21-3501	Bail spring shaft	.40
23	K11-0301	Bail spring	.55
24	K11-0501	Bail spring cover	.65
25	B83-4401	Bail spring cover screw	.50
26	371-2827	Bail bearing retaining washer	.60
27	K03-3701	Ball bearing	7.70
28	K11-1101	Spacing sleeve	.45
29	K10-9501	Anti-reverse ratchet	.70
30	K10-9301	Pinion gear	2.75
31	K11-3707	Body	9.45
32	B84-2102	Bearing retainer screw	.50
33	K10-9001	Anti-reverse lever	1.50
34	K11-4001	Anti-reverse cam spring	.55
35	E21-4801	Drag washer A	1.05
36	K10-9601	Click gear	.95

Key

No.	Part No.	Part Name	Price
37	E21-5001	Drag washer B	.95
38	E21-5101	Eared washer	.65
39	E21-5201	Key washer	.65
40	K10-9701	Drag coil spring	.80
41	K11-4601	Drag nut	2.30
42	E21-5401	Drag screw washer A	.40
43	K11-4301	Drag screw	1.90
44	373-7810	Drag screw washer B	.40
45	E21-5701	Drag screw retainer	.50
46	K10-9902	Drag knob	3.15
47	373-1001	Drag knob washer	.40
48	353-8203	Drag knob screw	.50
49	K11-3801	Anti-reverse pawl plate	.65
50	K10-9101	Anti-reverse pawl	.55
51	K10-9201	Anti-reverse pawl spring A	.55
52	B96-5501	Anti-reverse pawl collar	.95
53	B00-9701	Anti-reverse pawl screw	.45
54	B74-2501	Oscillating gear	.70
55	B84-3901	Ball bearing	.85
56	K03-9501	Drive gear	2.75
57	K11-1301	Anti-reverse pawl spring B	.40
58	373-7808	Drive gear washer	.40
59	B84-3901	Ball bearing	.85
60	K11-1802	Side cover	4.85
61	B83-5001	Side cover screw	.60
62	K11-2001	Handle assembly	6.60
63	B92-4902	Handle lock washer	.35
64	B92-5001	Handle lock screw	.80

GA1650T Special Parts:

1	K11-5401	Spool assembly	15.00
9	K11-2802	Rotor	7.50
20	K11-3002	Bail	3.80
31	K11-3708	Body	9.45
62	E00-2502	Handle assembly	6.80