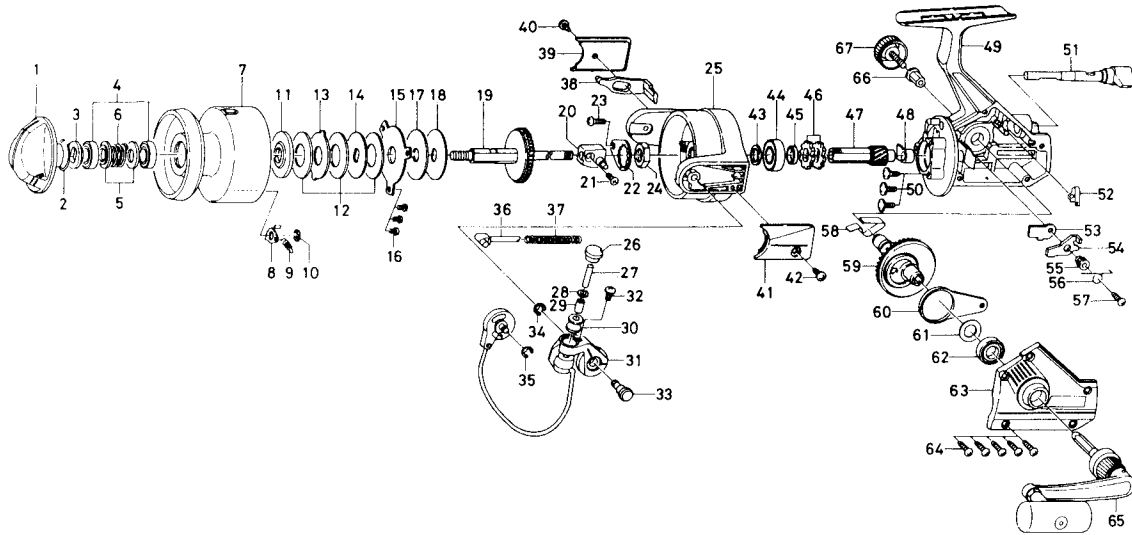


SPINNING REEL G7000



| Key No. | Parts No. | Parts Name | Key No. | Parts No. | Parts Name |
|---------|-----------|-------------------------------|---------|-----------|------------------------------|
| 1 | K 12-3904 | Drag knob | 35 | 320-1402 | Bail trip cam screw retainer |
| 2 | K 12-3801 | Drag washer retainer | 36 | K 12-0601 | Bail spring shaft |
| 3 | K 12-3601 | Bearing washer A | 37 | K 12-0701 | Bail spring |
| 4 | 635-4801 | Ball bearing A | 38 | K 07-1001 | Bail trip lever |
| 5 | K 07-3001 | Bearing washer B | 39 | K 07-1101 | Bail trip cover |
| 6 | K 12-3701 | Drag spring | 40 | K 07-1501 | Bail trip cover screw |
| 7 | K 07-2501 | Spool assembly | 41 | K 07-1401 | Bail spring cover |
| 8 | K 12-3101 | Click pawl | 42 | K 07-1501 | Bail spring cover screw |
| 9 | 145-2101 | Click spring | 43 | B90-9201 | Bearing washer C |
| 10 | 320-1402 | Click retainer | 44 | 637-6101 | Ball bearing B |
| 11 | K 12-3201 | Key washer A | 45 | K 07-0801 | Spacing sleeve |
| 12 | K 12-3301 | Drag washer A | 46 | E26-2701 | Anti-reverse ratchet |
| 13 | K 07-2801 | Eared washer | 47 | K 07-0701 | Pinion gear |
| 14 | K 07-2901 | Key washer B | 48 | K 07-0601 | Pinion holder |
| 15 | K 12-3401 | Drag plate | 49 | K 07-0201 | Body assembly |
| 16 | B83-4402 | Drag plate screw | 50 | B84-2102 | Bearing retainer screw |
| 17 | K 12-2501 | Drag washer B | 51 | K 11-9001 | Anti-reverse lever |
| 18 | K 12-2402 | Key washer C | 52 | B58-8601 | Anti-reverse cam spring |
| 19 | K 07-1701 | Main shaft assembly | 53 | K 11-8601 | Anti-reverse pawl plate |
| 20 | K 07-2001 | Oscillating slider | 54 | K 11-8701 | Anti-reverse pawl |
| 21 | 351-8901 | Oscillating slider screw | 55 | K 11-8801 | Anti-reverse pawl collar |
| 22 | B02-1601 | Rotor nut holding plate | 56 | K 11-8901 | Anti-reverse pawl spring A |
| 23 | L01-1702 | Rotor nut holding plate screw | 57 | K 08-7802 | Anti-reverse pawl screw |
| 24 | K 07-1601 | Rotor nut | 58 | K 12-1301 | Anti-reverse pawl spring B |
| 25 | K 07-0901 | Rotor | 59 | K 11-5901 | Drive gear |
| 26 | K 12-1001 | Line roller collar | 60 | L00-7901 | Oscillating support |
| 27 | K 12-1101 | Line roller pin | 61 | 371-2800 | Drive gear washer |
| 28 | 375-4301 | Line roller washer | 62 | B54-6001 | Ball bearing C |
| 29 | B44-3401 | Line roller bushing | 63 | K 07-2101 | Side cover |
| 30 | B21-1102 | Line roller | 64 | K 08-7801 | Side cover screw |
| 31 | K 07-1201 | Bail arm assembly | 65 | K 07-3101 | Handle assembly |
| 32 | 352-2503 | Line roller collar screw | 66 | 501-8401 | Handle collar |
| 33 | K 12-0401 | Bail arm screw | 67 | L00-9101 | Handle lock screw |
| 34 | 320-1402 | Bail arm screw retainer | | | |