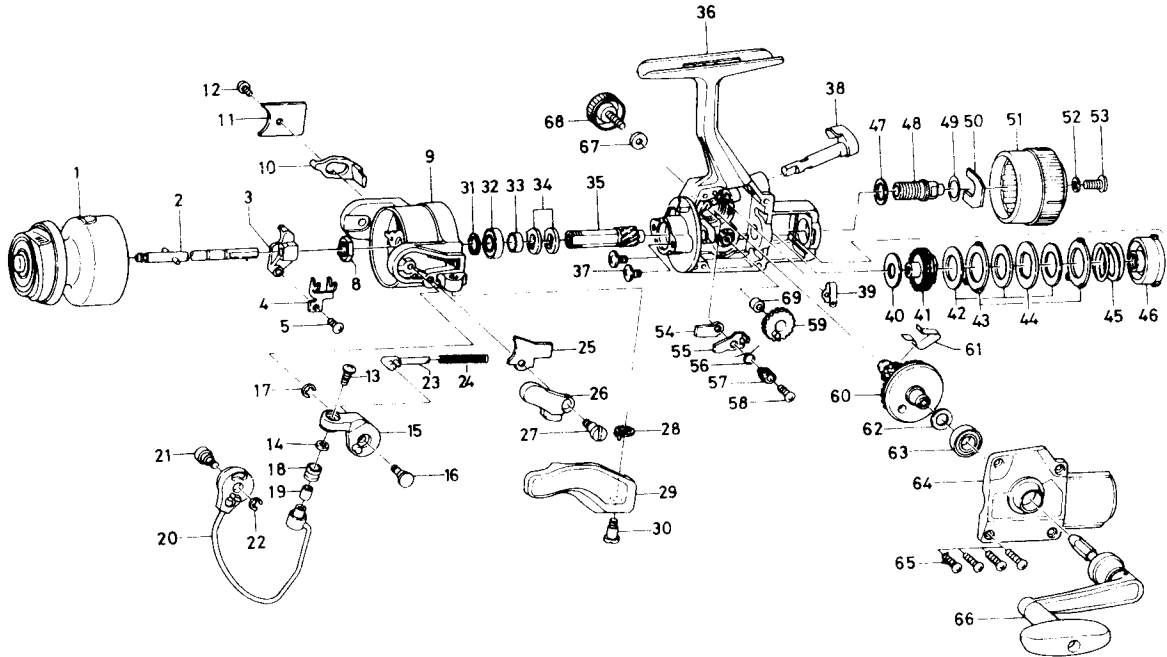


SPINNING REEL G1355TH/1655TH



Key
No.

Parts No.

Parts Name

1	E38-4101	Spool assembly
	E38-7601	Spool assembly (Extra Spool)
2	E23-0801	Main shaft assembly
3	E35-8001	Oscillating slider
4	E35-8101	Oscillating slider retainer
5	351-0903	Oscillating slider screw
8	B10-5701	Rotor nut
9	E22-8602	Rotor
10	B35-7801	Bail trip lever
11	E20-2401	Bail trip cover
12	B83-4401	Bail trip cover screw
13	B67-9302	Line roller screw
14	B55-4301	Line roller washer
15	E21-3601	Bail arm
16	E21-3701	Bail arm screw
17	320-5901	Bail arm screw retainer
18	250-3921	Line roller
19	B45-1501	Line roller bushing
20	E38-3901	Bail assembly
21	B83-4201	Bail trip cam screw
22	320-5901	Bail trip cam screw retainer
23	E21-3501	Bail spring shaft
24	E34-8001	Bail spring
25	E21-3801	Bail spring cover
26	B67-4901	Trigger plate
27	E35-7201	Bail spring cover screw
28	B67-5201	Trigger spring
29	B67-5105	Trigger lever
30	E35-7202	Trigger screw
31	371-2827	Bearing washer
32	B54-6001	Ball bearing A
33	E35-6601	Spacing sleeve
34	E35-6401	Anti-reverse ratchet
35	E38-5601	Pinion gear
36	E38-3801	Body assembly
37	B84-2102	Bearing retainer screw
38	E23-0701	Anti-reverse lever
39	B58-8601	Anti-reverse cam spring

Key
No.

Parts No.

Parts Name

40	E21-4801	Drag washer A
41	E35-6701	Click gear
42	E21-5001	Drag washer B
43	E21-5101	Eared washer
44	E21-5201	Key washer
45	E35-6801	Drag coil spring
46	E27-0801	Drag nut
47	E21-5401	Drag screw washer A
48	E34-8101	Drag screw
49	373-7810	Drag screw washer B
50	E21-5703	Drag screw retainer
51	E22-8402	Drag knob
52	375-1001	Drag knob washer
53	353-8203	Drag knob screw
54	E35-6001	Anti-reverse pawl plate
55	E35-6101	Anti-reverse pawl
56	E35-6201	Anti-reverse pawl spring A
57	B96-5501	Anti-reverse pawl collar
58	B00-9701	Anti-reverse pawl screw
59	B74-2503	Oscillating gear
60	F01-9301	Drive gear
61	E35-7301	Anti-reverse pawl spring B
62	373-7800	Drive gear washer
63	E15-4001	Ball bearing B
64	E38-4001	Side cover
65	B83-5001	Side cover screw
66	E23-4701	Handle assembly
67	B92-4902	Handle lock washer
68	B92-5003	Handle lock screw
69	E29-9401	Oscillating gear collar

1655TH Special Parts

1	E38-4401	Spool assembly
	E38-7701	Spool assembly (Extra Spool)
9	E22-9903	Rotor
20	E38-4301	Bail assembly
36	E38-3802	Body assembly
66	E23-1101	Handle assembly