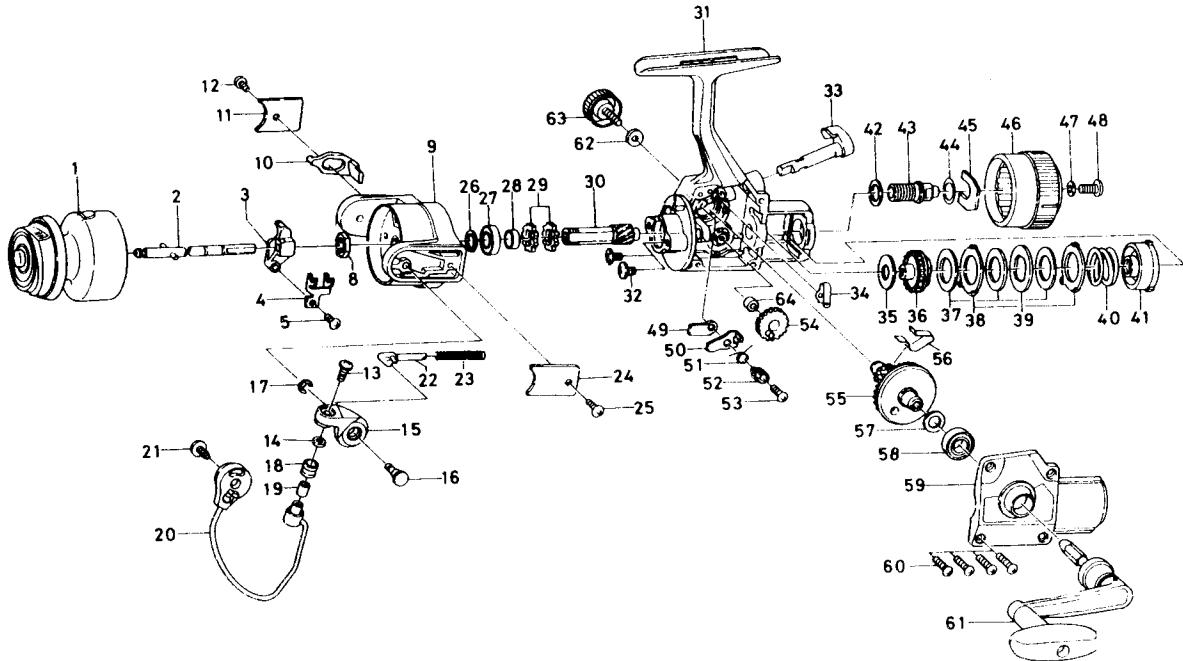


# SPINNING REEL G1350TH/G1650TH



Key No.	Parts No.	Parts Name	Key No.	Parts No.	Parts Name
1	E38-4101	Spool assembly	38	E21-5101	Eared washer
	E38-7601	Spool assembly (Extra Spool)	39	E21-5201	Key washer
2	E23-0801	Main shaft assembly	40	E35-6801	Drag coil spring
3	E35-8001	Oscillating slider	41	E27-0801	Drag nut
4	E35-8101	Oscillating slider retainer	42	E21-5401	Drag screw washer A
5	351-0903	Oscillating slider screw	43	E34-8101	Drag screw
8	B10-5701	Rotor nut	44	373-7810	Drag screw washer B
9	E23-5803	Rotor	45	E21-5703	Drag screw retainer
10	B35-7801	Bail trip lever	46	E22-8402	Drag knob
11	E20-2401	Bail trip cover	47	375-1001	Drag knob washer
12	B83-4401	Bail trip cover screw	48	353-8203	Drag knob screw
13	B67-9302	Line roller screw	49	E35-6001	Anti-reverse pawl plate
14	B55-4301	Line roller washer	50	E35-6101	Anti-reverse pawl
15	E35-6901	Bail arm	51	E35-6201	Anti-reverse pawl spring A
16	E35-7001	Bail arm screw	52	B96-5501	Anti-reverse pawl collar
17	320-5901	Bail arm screw retainer	53	B00-9701	Anti-reverse pawl screw
18	250-3921	Line roller	54	B74-2503	Oscillating gear
19	B45-1501	Line roller bushing	55	F01-9301	Drive gear
20	E38-4201	Bail assembly	56	E35-7301	Anti-reverse pawl spring B
21	B84-2101	Bail trip cam screw	57	373-7800	Drive gear washer
22	E21-3501	Bail spring shaft	58	E15-4001	Ball bearing B
23	E34-8001	Bail spring	59	E38-4001	Side cover
24	E35-7101	Bail spring cover	60	B83-5001	Side cover screw
25	B83-4401	Bail spring cover screw	61	E23-4701	Handle assembly
26	371-2827	Bearing washer	62	B92-4902	Handle lock washer
27	B54-6001	Ball bearing A	63	B92-5003	Handle lock screw
28	E35-6601	Spacing sleeve	64	E29-9401	Oscillating gear collar
29	E35-6501	Anti-reverse ratchet			
30	E38-5601	Pinion gear			
31	E38-3803	Body assembly	<b>G1650TH Special Parts</b>		
32	B84-2102	Bearing retainer screw	1	E38-4401	Spool assembly
33	E23-0701	Anti-reverse lever		E38-7701	Spool assembly (Extra Spool)
34	B58-8601	Anti-reverse cam spring	9	E23-6003	Rotor
35	E21-4801	Drag washer A	20	E38-4501	Bail assembly
36	E35-6701	Click gear	31	E38-3804	Body assembly
37	E21-5001	Drag washer B	61	E23-1101	Handle assembly