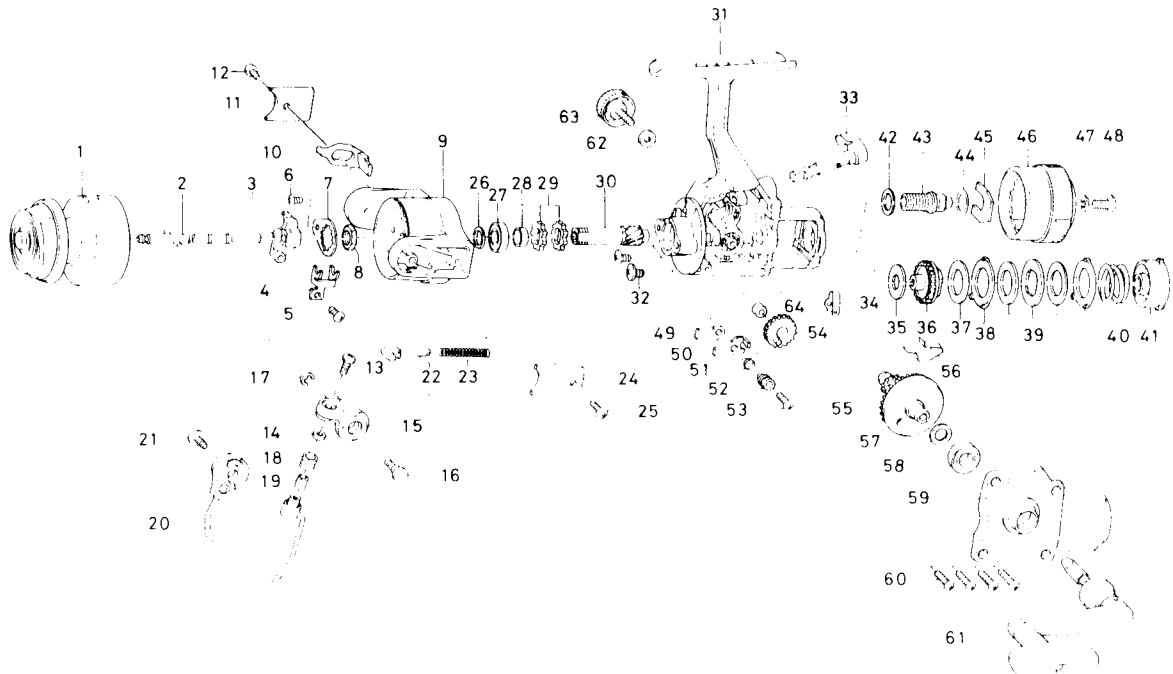


# SPINNING REEL G1350T/1650T



Key No.	Parts No.	Parts Name
1	E28 8401	Spool assembly
2	E23 0801	Main shaft assembly
3	K11 1601	Oscillating slider
4	K11 1701	Oscillating slider retainer
5	351 0903	Oscillating slider screw
6	B83 4402	Rotor nut holding plate screw
7	K11 1201	Rotor nut holding plate
8	B10 5701	Rotor nut
9	E23 5801	Rotor
10	K11 1001	Bail trip lever
11	E20 2401	Bail trip cover
12	B83 4401	Bail trip cover screw
13	B67 9302	Line roller screw
14	B55 4301	Line roller washer
15	K11 0401	Bail arm
16	K11 2601	Bail arm screw
17	320 5901	Bail arm screw retainer
18	250 3921	Line roller
19	B45 1501	Line roller bushing
20	K11 0701	Bail assembly
21	B84 2101	Bail trip cam screw
22	E21 3501	Bail spring shaft
23	K11 0301	Bail spring
24	K11 0501	Bail spring cover
25	B83 4401	Bail spring cover screw
26	371 2827	Ball bearing retaining washer
27	B54 6001	Ball bearing A
28	K11 1101	Spacing sleeve
29	K10 9501	Anti reverse ratchet
30	K10 9301	Pinion gear
31	E22 8103	Body
32	B84 2102	Bearing retainer screw
33	E23 0701	Anti reverse lever
34	B58 8601	Anti reverse cam spring
35	E21 4801	Drag washer A
36	K10 9601	Click gear

Key No.	Parts No.	Parts Name
37	E21 5001	Drag washer B
38	E21 5101	Eared washer
39	E21 5201	Key washer
40	K10 9701	Drag coil spring
41	E27 0801	Drag nut
42	E21 5401	Drag screw washer A
43	E28 7701	Drag screw
44	373 7810	Drag screw washer B
45	E21 5702	Drag screw retainer
46	E22 8401	Drag knob
47	375 1001	Drag knob washer
48	353 8203	Drag knob screw
49	K10 8801	Anti reverse pawl plate
50	K10 9101	Anti reverse pawl
51	K10 9201	Anti reverse pawl spring
52	B96 5501	Anti reverse pawl collar
53	B00 9701	Anti reverse pawl screw
54	B74 2503	Oscillating gear
55	E28 7801	Drive gear
56	K11 1301	Anti reverse pawl spring
57	373 7800	Drive gear washer
58	E15 4001	Bail bearing B
59	E22 8901	Side cover
60	B83 5001	Side cover screw
61	E23 4701	Handle assembly
62	B92 4902	Handle lock washer
63	B92 5001	Handle lock screw
64	F29 9401	Oscillating gear collar

### G1650T Special Parts

1	E28 8601	Spool assembly
9	E23 6001	Rotor
20	K11 3001	Bail assembly
31	E22 8104	Body
61	E23 1101	Handle assembly