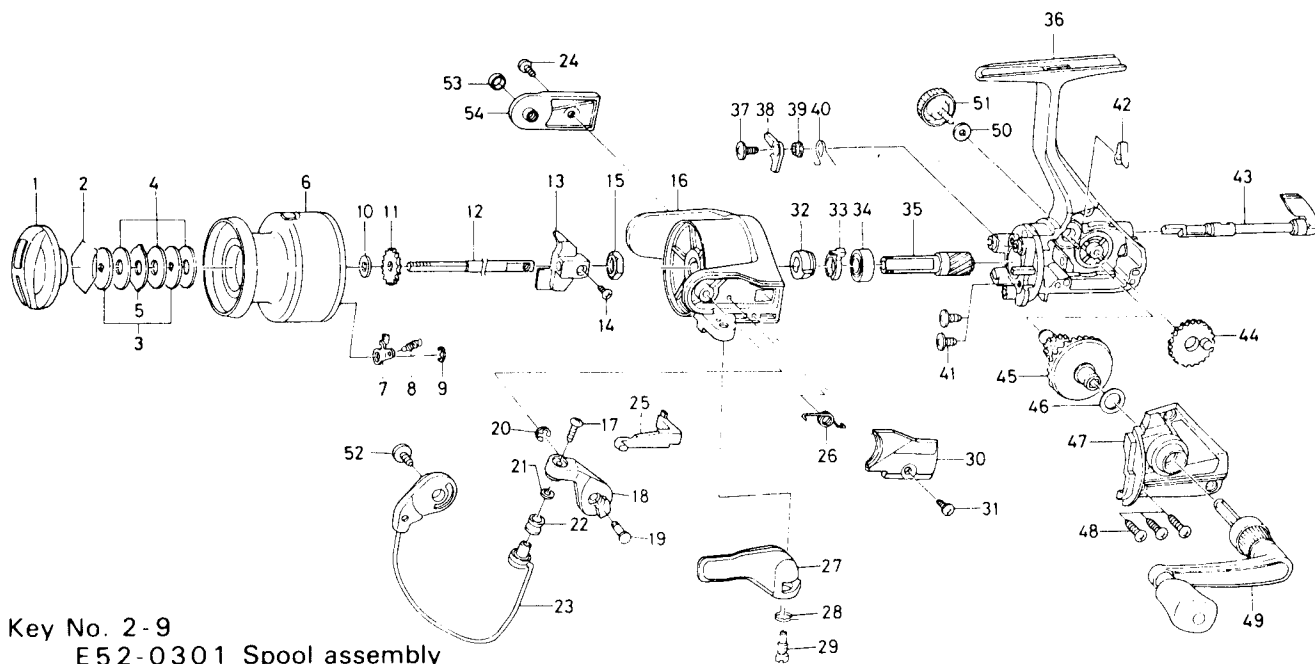


SPINNING REEL — EL1305X



Key No. 2-9
E52-0301 Spool assembly

Key No.	Parts No.	Parts Name
1	E50-4602	Drag knob
2	171-7701	Drag washer retainer
3	E46-7201	Key washer
4	E13-6003	Drag washer
5	373-3603	Eared washer
6	E52-0401	Spool assembly
7	B07-5304	Click pawl
8	E40-3101	Click spring
9	320-5901	Click retainer
10	E46-7101	Spool washer
11	270-6501	Click gear
12	E48-4301	Main shaft
13	E45-1401	Oscillating slider
14	351-0315	Oscillating block screw
15	341-9201	Rotor nut
16	F11-1203	Rotor
17	B67-9305	Line roller screw
18	E49-4101	Bail arm
19	E49-3501	Bail arm screw
20	320-5901	Bail arm screw retainer
21	B55-4301	Line roller washer
22	L01-8201	Line roller
23	F21-6901	Bail assembly
24	L01-1701	Bail trip cover screw
25	E45-1601	Bail trip lever
26	F12-8901	Bail spring
27	F11-0601	Trigger lever

Key No.	Parts No.	Parts Name
28	E36-9901	Trigger spring
29	E37-0001	Trigger screw
30	E49-4201	Bail spring cover
31	E36-4201	Bail spring cover screw
32	E49-2401	Anti-reverse ratchet
33	E38-5501	Anti-reverse pawl spring A
34	L03-6601	Ball bearing
35	E51-9801	Pinion gear
36	F16-9901	Body assembly
37	L00-1801	Anti-reverse pawl screw
38	L01-4401	Anti-reverse pawl
39	L01-4302	Anti-reverse pawl collar
40	L00-1501	Anti-reverse pawl spring B
41	E03-7801	Bearing retainer screw
42	E32-7801	Anti-reverse cam spring
43	F08-5114	Anti-reverse lever
44	E45-1301	Oscillating gear
45	F17-0001	Drive gear
46	373-7800	Drive gear washer
47	F19-8901	Side cover
48	B83-5001	Side cover screw
49	E49-3801	Handle assembly
50	B92-4902	Handle lock washer
51	B92-5002	Handle lock screw
52	B51-5302	Bail trip cam screw
53	F17-3001	Bail trip collar
54	F17-9901	Bail trip cover