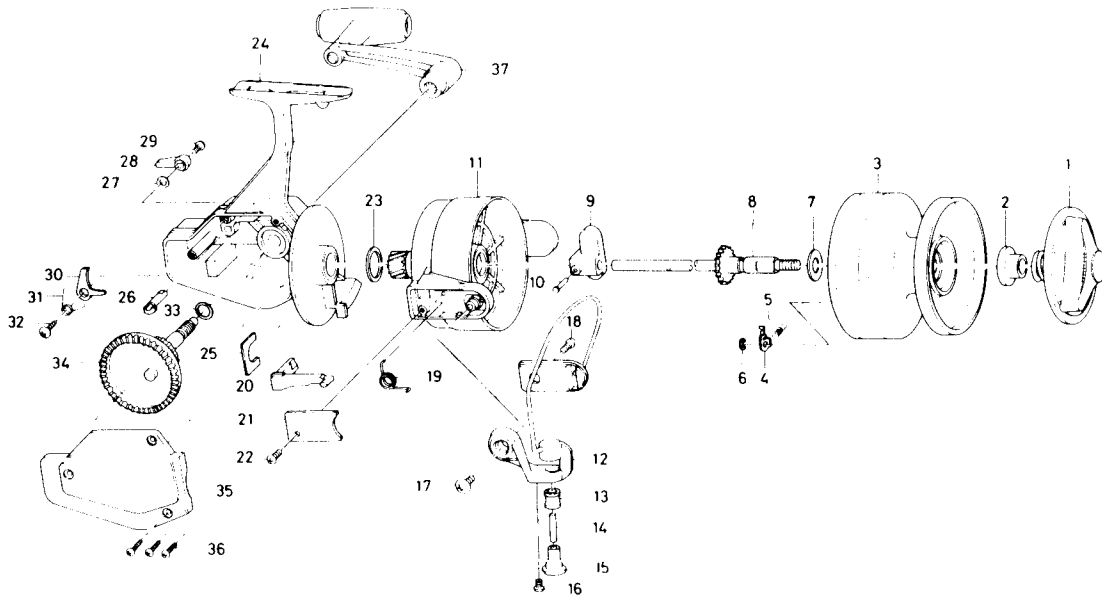


# SPINNING REEL DF100



**Key No. 1-6**

L03-9801 Spool assembly

Key No.	Parts No.	Parts Name	Key No.	Parts No.	Parts Name
1	L04-0301	Drag knob	20	L03-7901	Bail trip lever
2	L04-0201	Drag metal	21	L03-8101	Bail spring cover
3	L03-9901	Spool	22	351-6408	Bail spring cover screw
4	B07-8201	Click pawl	23	L03-8801	Rotor washer
5	145-2101	Click spring	24	L03-6701	Body
6	320-1402	Click retainer	25	B39-8501	Pinion retainer
7	373-4413	Spool washer	26	L03-7101	Anti-reverse cam
8	L03-9001	Main shaft assembly	27	150-1751	Tension spring
9	L03-8701	Oscillating support	28	540-2221	Anti-reverse lever
10	B39-9001	Oscillating support pin	29	B67-9302	Anti-reverse lever screw
11	L03-7601	Rotor assembly	30	L03-7201	Anti-reverse pawl
12	L03-8201	Bail	31	L03-7301	Anti-reverse pawl spring
13	B40-5402	Line roller	32	352-9503	Anti-reverse pawl screw
14	L03-8601	Line roller pin	33	373-7800	Drive gear washer
15	L03-8501	Line roller collar	34	L03-7401	Drive gear
16	352-2503	Line roller collar screw	35	L03-9301	Side cover
17	352-1102	Bail arm screw	36	L03-9501	Side cover screw
18	351-6408	Bail trip cover screw	37	L03-9601	Handle assembly
19	L03-8001	Bail spring			