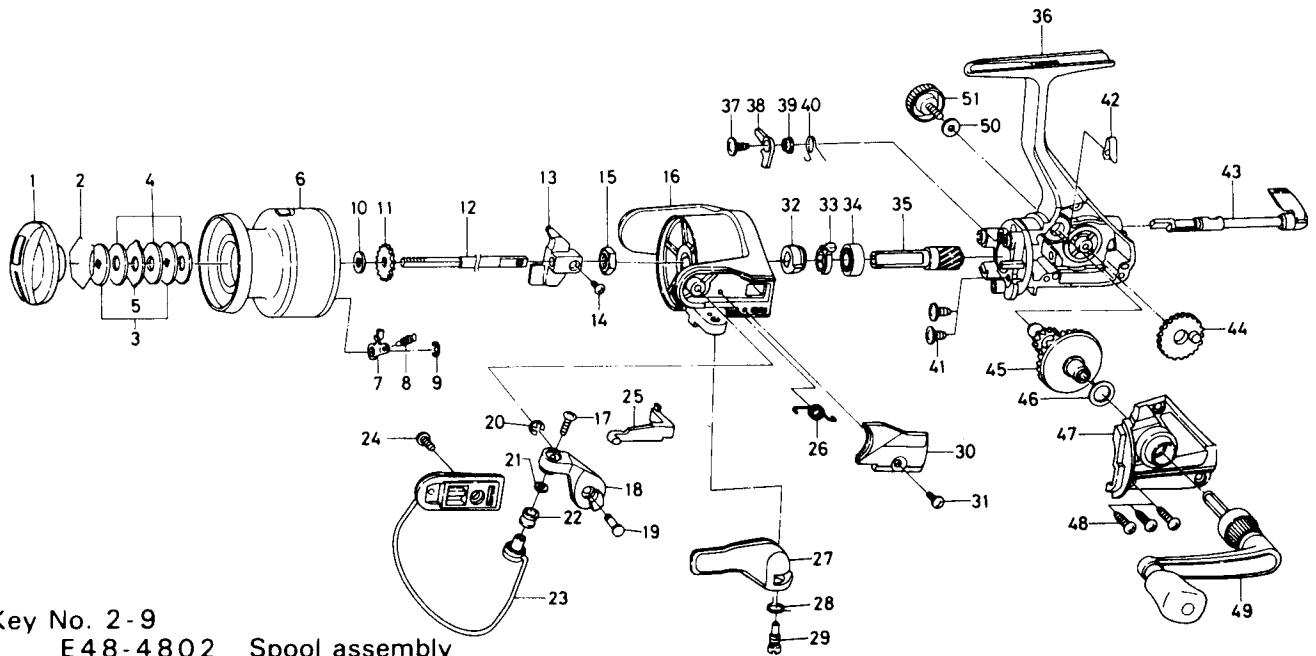


SPINNING REEL — D25XB



Key No. 2-9
E48-4802 Spool assembly

Key

Key No.	Parts No.	Parts Name
1	F10-7402	Drag knob
2	171-7701	Drag washer retainer
3	E46-7201	Key washer
4	E13-6003	Drag washer
5	373-3603	Eared washer
6	E48-4702	Spool assembly
7	B07-5304	Click pawl
8	E40-3101	Click spring
9	320-5901	Click retainer
10	E46-7101	Spool washer
11	270-6501	Click gear
12	E48-4301	Main shaft
13	E45-1401	Oscillating slider
14	351-0315	Oscillating slider screw
15	341-9201	Rotor nut
16	F11-1202	Rotor
17	B67-9304	Line roller screw
18	E49-4101	Bail arm
19	E49-3501	Bail arm screw
20	320-5901	Bail arm screw retainer
21	B55-4301	Line roller washer
22	L01-8201	Line roller
23	E49-3601	Bail assembly
24	L01-1702	Bail trip cam screw
25	E45-1601	Bail trip lever
26	F22-2601	Bail spring

Key

Key No.	Parts No.	Parts Name
27	F11-0602	Trigger lever
28	E36-9901	Trigger spring
29	E37-0001	Trigger screw
30	E49-4201	Bail spring cover
31	E36-4202	Bail spring cover screw
32	E49-2401	Anti-reverse ratchet
33	E38-5501	Anti-reverse pawl spring
34	L03-6601	Ball bearing
35	E30-3401	Pinion gear
36	F21-2801	Body assembly
37	L00-1801	Anti-reverse pawl screw
38	L01-4401	Anti-reverse pawl
39	L01-4302	Anti-reverse pawl collar
40	L00-1501	Anti-reverse pawl spring
41	E03-7801	Bearing retainer screw
42	E32-7801	Anti-reverse cam spring
43	F08-5110	Anti-reverse lever
44	E45-1301	Oscillating gear
45	F08-4801	Drive gear
46	373-7800	Drive gear washer
47	F10-5506	Side cover
48	B83-5002	Side cover screw
49	E49-3801	Handle assembly
50	B92-4902	Handle lock washer
51	B92-5001	Handle lock screw