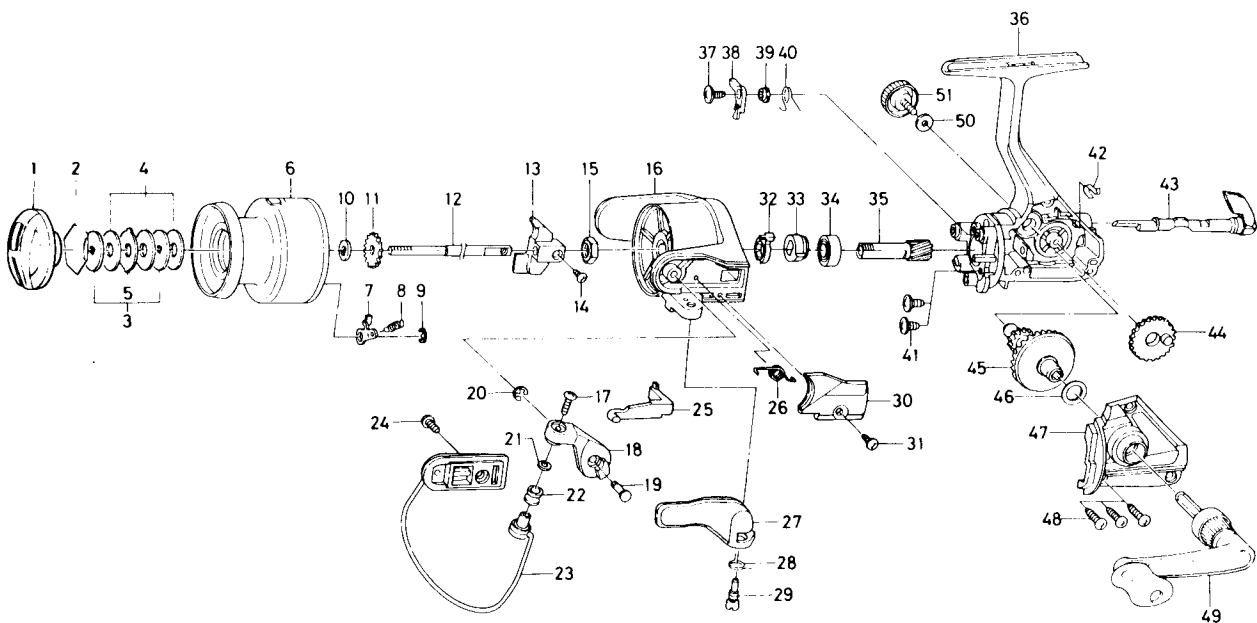


## SPINNING REEL — BW705X



Key No. 2-9

E51-5901 Spool assembly 14.00

| Key No. | Part No. | Part Name                | Price |
|---------|----------|--------------------------|-------|
| 1       | E49-6902 | Drag knob                | 3.60  |
| 2       | 171-7701 | Drag washer retainer     | .35   |
| 3       | E46-7201 | Key washer               | .80   |
| 4       | E13-6001 | Drag washer              | .70   |
| 5       | 373-3603 | Eared washer             | .60   |
| 6       | E51-6001 | Spool assembly           | N/A   |
| 7       | B07-5304 | Click pawl               | .70   |
| 8       | E40-3101 | Click spring             | .70   |
| 9       | 320-5901 | Click retainer           | .50   |
| 10      | E46-7101 | Spool washer             | .60   |
| 11      | 270-6501 | Click gear               | .60   |
| 12      | E49-8401 | Main shaft               | 1.85  |
| 13      | F12-2301 | Oscillating slider       | .70   |
| 14      | 351-0315 | Oscillating slider screw | .50   |
| 15      | 341-9201 | Rotor nut                | .55   |
| 16      | E50-0902 | Rotor                    | 4.60  |
| 17      | B67-9304 | Line roller screw        | .40   |
| 18      | E49-6701 | Bail arm                 | 1.15  |
| 19      | E49-3501 | Bail arm screw           | .95   |
| 20      | 320-5901 | Bail arm screw retainer  | .50   |
| 21      | B55-4301 | Line roller washer       | .40   |
| 22      | L01-8201 | Line roller              | .90   |
| 23      | E50-1101 | Bail assembly            | 4.15  |
| 24      | L01-1702 | Bail trip cam screw      | .35   |
| 25      | E49-6401 | Bail trip lever          | .70   |
| 26      | E49-6801 | Bail spring              | .60   |

Key No.

| Key No. | Part No. | Part Name                  | Price |
|---------|----------|----------------------------|-------|
| 27      | E37-3602 | Trigger lever              | 2.70  |
| 28      | E36-9901 | Trigger spring             | .70   |
| 29      | E37-0001 | Trigger screw              | 2.10  |
| 30      | E49-6301 | Bail spring cover          | .60   |
| 31      | E36-4202 | Bail spring cover screw    | .60   |
| 32      | F12-2101 | Anti-reverse pawl spring A | 1.65  |
| 33      | E49-8501 | Anti-reverse ratchet       | 1.90  |
| 34      | 634-1301 | Ball bearing               | 6.95  |
| 35      | F12-1601 | Pinion gear                | 3.95  |
| 36      | F15-6202 | Body assembly              | 5.70  |
| 37      | F12-5701 | Anti-reverse pawl screw    | .55   |
| 38      | F12-1901 | Anti-reverse pawl          | .70   |
| 39      | F12-3501 | Anti-reverse pawl collar   | .80   |
| 40      | F12-3401 | Anti-reverse pawl spring B | .60   |
| 41      | E03-7801 | Bearing retainer screw     | .60   |
| 42      | F12-2001 | Anti-reverse cam spring    | .55   |
| 43      | F08-5104 | Anti-reverse lever         | 1.65  |
| 44      | F12-2201 | Oscillating gear           | .75   |
| 45      | F12-1501 | Drive gear                 | 2.10  |
| 46      | 375-8502 | Drive gear washer          | .45   |
| 47      | E49-9003 | Side cover                 | 1.85  |
| 48      | E15-8602 | Side cover screw           | .60   |
| 49      | E49-7401 | Handle assembly            | 6.15  |
| 50      | F02-0201 | Handle lock washer         | .35   |
| 51      | B92-5004 | Handle lock screw          | .95   |