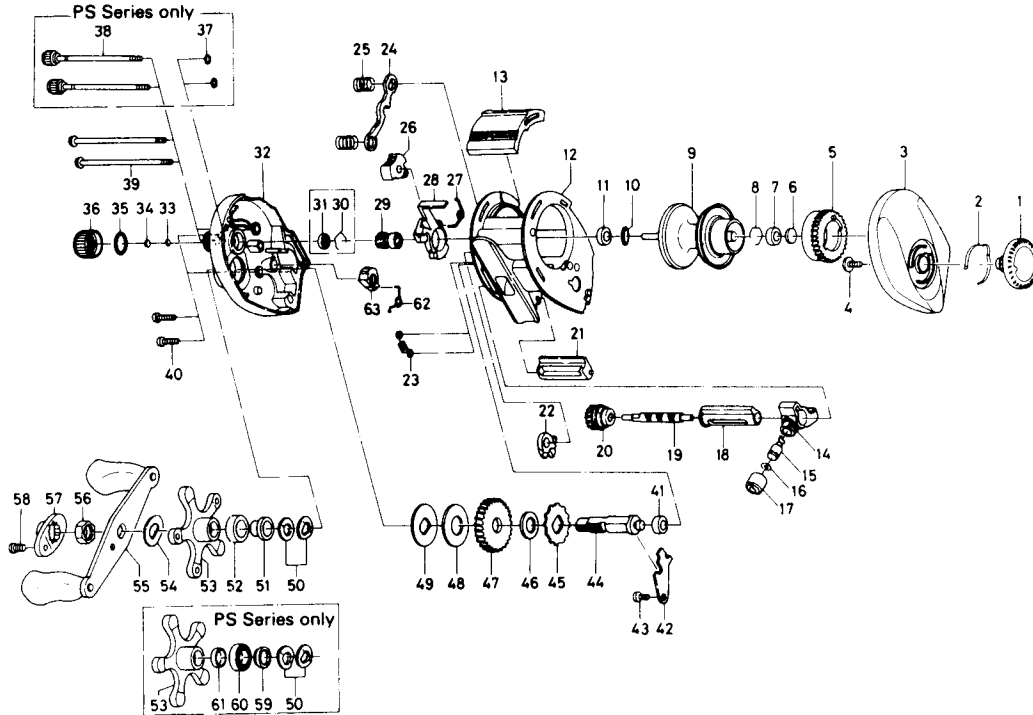


BAITCASTING REEL — BW2L, EL2L, PS2L-2B, PS2L-5B

(Special Parts, EL2L, PS2L-2B, PS2L-5B — continued on page 92.)



Key No.	Part No.	Part Name	Price	Key No.	Part No.	Part Name	Price
BW2L Parts:							
1	F05-5802	Brake adjusting knob	2.60	29	E42-7501	Pinion gear	6.95
2	F03-2401	Brake click spring	.60	32	F06-1809	Left side plate	8.10
3	F12-3701	Right side plate	8.80	33	E16-9203	Spool adjusting cap metal	.60
4	B84-2102	Brake adjusting knob screw	.50	34	E17-0501	Spacer B	.50
5	E23-9501	Magnet holder	2.85	35	171-5201	"O" ring A	1.15
6	375-7400	Spacer A	.60	36	E23-8401	Cast control cap	.60
7	B55-0301	Bushing A	1.50	39	E28-4901	Right side plate screw	1.15
8	B42-1601	Bearing retainer A	.45	40	E33-0401	Set plate screw	.60
9	F06-2101	Spool assembly	10.00	41	B55-0301	Bushing A	1.50
10	F12-0701	Ball bearing retaining ring	1.15	42	E23-7601	Drive shaft retainer	.65
11	E35-1501	Bushing A	1.15	43	B83-4402	Drive shaft retainer screw	.50
12	F12-1101	Frame assembly	8.50	44	E23-7505	Drive shaft	5.60
13	F05-4001	Clutch lever	1.30	45	E32-7701	Anti-reverse ratchet	1.15
14	E16-6301	Line guide	4.10	46	375-7103	Drive shaft washer	.60
15	121-4212	Line guide pawk	2.85	47	E20-6102	Drive gear	7.20
16	375-4101	Line guide washer	.30	48	B36-0202	Drag washer	1.10
17	342-4801	Pawl cap	1.55	49	B36-0301	Key washer	.80
18	E28-4701	Level wind guard	1.40	50	150-8901	Drag spring washer	.55
19	E45-1201	Worm shaft	6.85	51	E32-6401	Spacing sleeve A	1.15
20	F08-5301	Worm shaft gear	1.55	52	E34-6801	Spacing sleeve B	1.15
21	F05-3901	Line guard	1.45	53	E23-8701	Star drag	2.25
22	E23-8001	Anti-reverse pawl	2.30	54	150-9001	Friction washer	.45
23	E16-5801	Clutch trip plate spring	.95	55	E30-5201	Handle assembly	4.95
24	E23-7701	Yoke	.85	56	B43-3601	Handle nut	1.15
25	E16-7101	Yoke spring	.60	57	F05-4401	Handle nut plate	.95
26	E24-9101	Flipping/casting selector	.70	58	351-1801	Handle nut plate screw	.45
27	E28-4101	Clutch cam spring	.60	62	E30-9602	Anti-reverse lever spring	.65
28	E28-4001	Clutch cam	.85	63	E30-9501	Anti-reverse lever	.75

Handwritten note: F26-5601