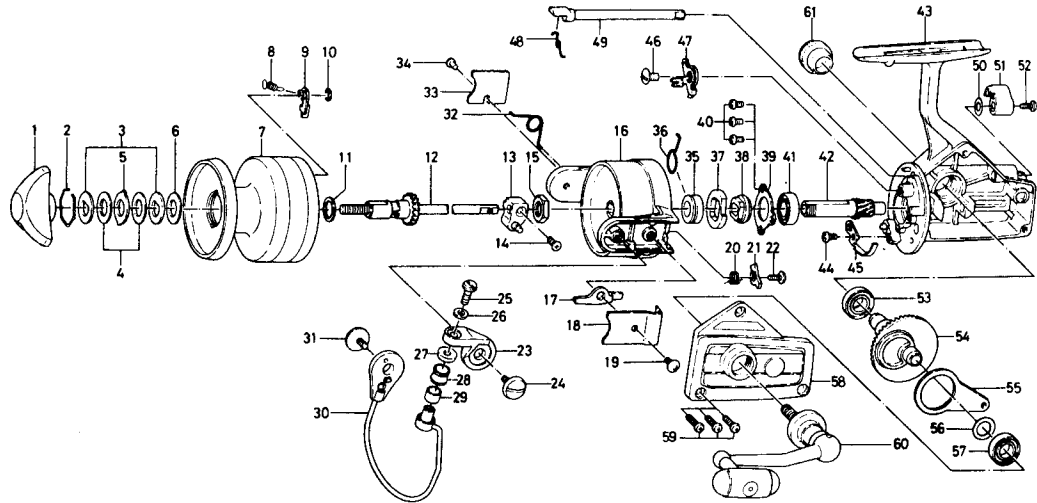


SPINNING REEL

BLACK GOLD BG-30



Key No.	Parts No.	Parts Name
1	740-4501	Drag knob
2	171-7701	Drag washer retainer
3	376-4001	Drag D washer
4	375-7802	Disc washer
5	375-8002	Drag A washer
6	375-7803	Drag washer A
7	734-7803	Spool
8	145-2101	Spool click claw spring
9	B07-8201	Spool click claw
10	320-1402	Spool click claw retainer
11	376-3901	Spool washer
12	711-5702	Main shaft
13	637-3001	Oscillating support
14	351-8901	Oscillating slider screw
15	B10-5701	Rotor nut
16	202-1802	Rotor
17	571-1001	Bail kick lever
18	B14-1802	Bail kick lever cover
19	351-7701	Bail kick lever cover screw
20	145-0701	Bail kick cam spring
21	571-1301	Bail kick cam
22	351-4701	Bail kick cam screw
23	231-3501	Arm lever
24	363-5201	Arm lever screw
25	363-3111	Bail screw
26	375-1101	Bail washer
27	501-2001	Roller collar
28	250-4501	Line roller
29	502-1401	Roller metal
30	725-8802	Bail
31	363-5201	Bail holder screw

Key No.	Parts No.	Parts Name
32	145-2001	Bail spring
33	041-8802	Bail spring cover
34	351-6101	Bail spring cover screw
35	502-1301	Spring holder
36	145-2901	Anti-reverse claw spring
37	280-9501	Ratchet
38	636-6711	Click gear
39	636-9901	Ball bearing ret. washer
40	351-6601	Ball bearing ret. washer screw
41	635-4801	Ball bearing
42	403-2801	Pinion gear
43	B31-8802	Body
44	351-6601	Cam kick plate screw
45	B22-9901	Cam kick plate
46	352-1102	Anti-reverse claw screw
47	B33-5601	Anti-reverse claw
48	144-0321	Anti-reverse cam spring
49	B15-6403	Anti-reverse cam
50	373-2700	Anti-reverse lever washer
51	541-7301	Anti-reverse lever
52	352-2501	Anti-reverse lever screw
53	636-6011	Ball bearing
54	414-2302	Drive gear
55	481-2401	Oscillating slider
56	371-2800	Drive gear washer
57	636-6011	Ball bearing
58	B31-9902	Body cover
59	351-5901	Body cover screw
60	B36-8501	Handle
61	363-4701	Handle screw cap