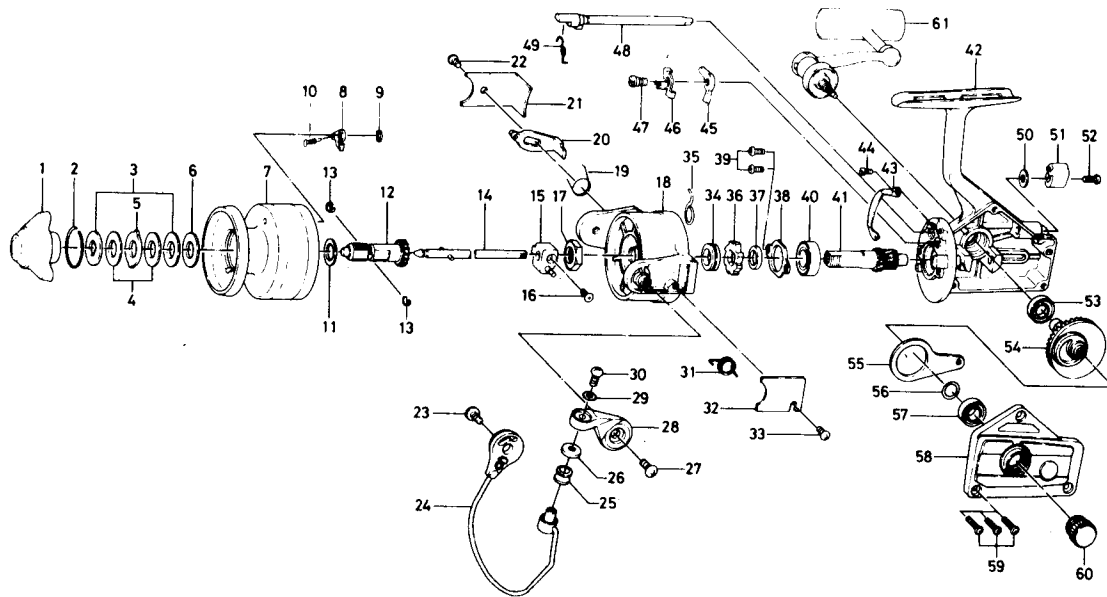


## SPINNING REEL

## BLACK GOLD BG-15



| Key No. | Parts No. | Parts Name                  |
|---------|-----------|-----------------------------|
| 1       | 740-3801  | Drag knob                   |
| 2       | 170-4601  | Drag washer retainer        |
| 3       | 374-4802  | Drag D washer               |
| 4       | 373-3701  | Disc washer                 |
| 5       | 373-3603  | Drag A washer               |
| 6       | 373-3704  | Drag washer A               |
| 7       | 733-5405  | Spool                       |
| 8       | 807-5302  | Spool click claw            |
| 9       | 320-5901  | Spool click claw retainer   |
| 10      | 144-1211  | Spool click claw spring     |
| 11      | 375-5701  | Spool washer                |
| 12      | 720-1721  | Spool metal                 |
| 13      | 151-7211  | Spool metal leaf spring     |
| 14      | B31-7601  | Main shaft                  |
| 15      | 637-0102  | Oscillating support         |
| 16      | 351-6311  | Oscillating slider screw    |
| 17      | B10-5701  | Rotor nut                   |
| 18      | B32-0301  | Rotor                       |
| 19      | B18-4701  | Bail kick lever spring      |
| 20      | B32-1801  | Bail kick lever             |
| 21      | B31-7801  | Bail kick lever cover       |
| 22      | 351-7701  | Bail kick lever cover screw |
| 23      | 353-8201  | Bail holder screw           |
| 24      | B18-5003  | Bail                        |
| 25      | 250-4221  | Line roller                 |
| 26      | 501-1601  | Roller collar               |
| 27      | 353-8201  | Arm lever screw             |
| 28      | B18-4501  | Arm lever                   |
| 29      | 375-1001  | Bail washer                 |
| 30      | 353-8201  | Bail screw                  |
| 31      | Ba8-4401  | Bail spring                 |

| Key No. | Parts No. | Parts Name                     |
|---------|-----------|--------------------------------|
| 32      | B32-0201  | Bail spring cover              |
| 33      | 351-7701  | Bail spring cover screw        |
| 34      | 501-9901  | Spring holder                  |
| 35      | 145-0901  | Anti-reverse claw spring       |
| 36      | 280-9001  | Ratchet                        |
| 37      | 501-9801  | Spacer                         |
| 38      | 321-0901  | Ball bearing ret. washer       |
| 39      | 351-0901  | Ball bearing ret. washer screw |
| 40      | 635-4801  | Ball bearing                   |
| 41      | 403-2201  | Pinion gear                    |
| 42      | B31-8002  | Body                           |
| 43      | B32-1701  | Cam kick plate                 |
| 44      | 363-2911  | Cam kick plate screw           |
| 45      | 111-8201  | Anti-reverse claw              |
| 46      | 041-7101  | Anti-reverse claw plate        |
| 47      | 363-9301  | Anti-reverse claw screw        |
| 48      | 461-7104  | Anti-reverse cam               |
| 49      | 144-0321  | Anti-reverse cam spring        |
| 50      | 371-6903  | Anti-reverse lever washer      |
| 51      | 541-6801  | Anti-reverse lever             |
| 52      | 353-4401  | Anti-reverse lever screw       |
| 53      | 637-5701  | Ball bearing                   |
| 54      | 414-1312  | Drive gear                     |
| 55      | 481-2101  | Oscillating slider             |
| 56      | 375-8500  | Drive gear washer              |
| 57      | 637-5701  | Ball bearing                   |
| 58      | B31-7502  | Body cover                     |
| 59      | 353-0001  | Body cover screw               |
| 60      | B03-4802  | Handle screw cap               |
| 61      | B56-0801  | Handle                         |