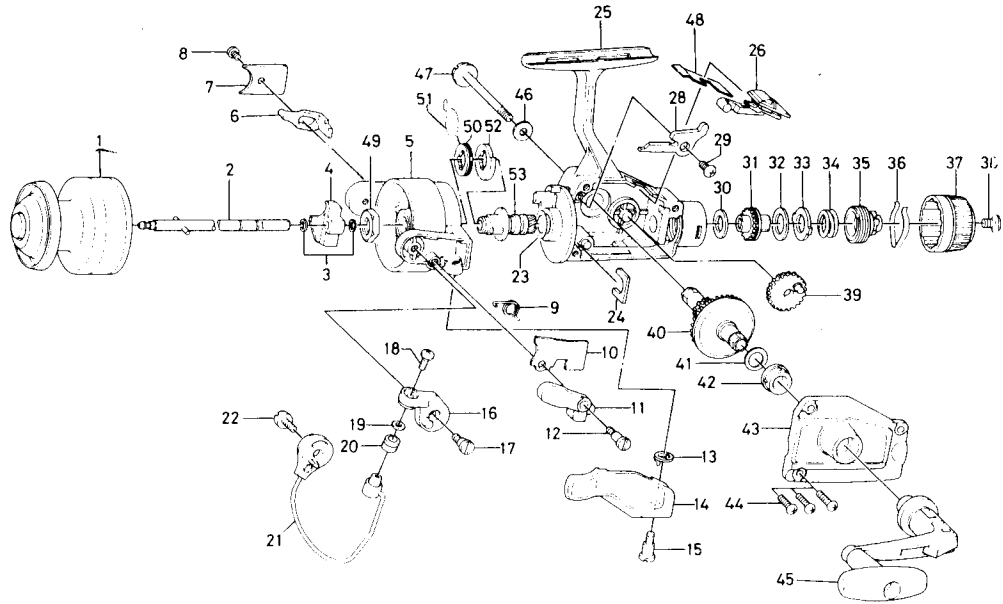




# SPINNING REEL ASA1655/2055



Key No.	Parts No.	Parts Name
1	B77-3201	Spool
2	B77-0801	Main shaft
3	320-8202	Oscillating slider retainer
4	B77-0701	Oscillating slider
5	B82-1503	Rotor
6	B77-3701	Bail kick lever
7	B76-9701	Bail kick lever cover
8	352-0402	Bail kick lever cover screw
9	B76-9101	Bail spring
10	B76-9201	Bail spring cover
11	B76-9301	Trigger plate
12	B68-8801	Bail spring cover screw A
13	B67-5201	Trigger spring
14	B67-5102	Trigger lever
15	B68-8801	Trigger screw
16	B67-4601	Arm lever
17	B67-4701	Arm lever screw
18	B67-9301	Bail screw
19	B55-4301	Bail washer
20	250-3921	Line roller
21	B77-3001	Bail
22	B68-8701	Bail holder screw
23	372-8600	Rotor washer
24	B60-3401	Pinion retainer
25	B76-8106	Body
26	B84-8901	Anti-reverse lever
28	B89-9001	Anti-reverse claw
29	351-6102	Anti-reverse claw screw
30	B46-9504	Drag washer A
31	B76-9801	Click gear

Key No.	Parts No.	Parts Name
32	B78-6601	Drag washer B
33	373-3603	Drag washer C
34	B91-3701	Drag knob spring
35	B77-0003	Drag screw
36	B77-0301	Drag washer spring
37	B82-6801	Drag knob
38	352-1103	Drag knob screw
39	B74-3701	Oscillating gear
40	B77-0601	Drive gear
41	373-7800	Drive gear washer
42	B12-9002	Bearing
43	B77-1006	Body cover
44	351-5904	Body cover screw
45	B91-1301	Handle
46	372-3501	Handle washer
47	B11-5801	Handle screw
48	B79-0101	Anti-reverse lever spring
49	340-8301	Rotor nut
50	B89-8701	Spring holder
51	B89-8801	Anti-reverse claw spring
52	B76-8901	Ratchet
53	B89-4701	Pinion gear

### ASA2055 Special Parts

1	B77-1501	Spool
5	B82-1703	Rotor
6	B76-9601	Bail kick lever
21	B76-9401	Bail
25	B76-8105	Body
43	B77-1005	Body cover
45	B78-6601	Handle