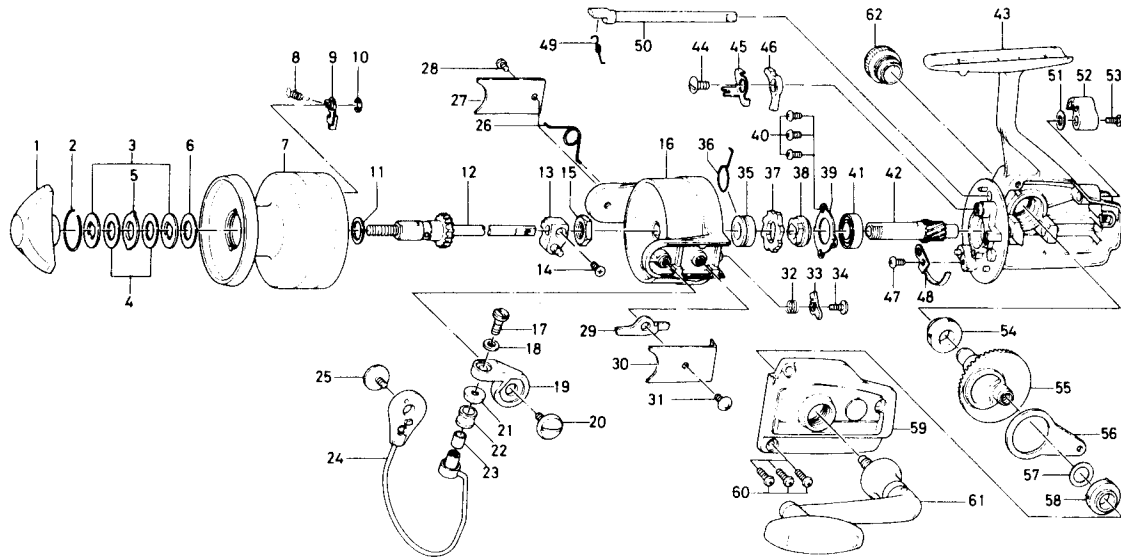


SPINNING REEL 4000X



KEY NO. 2 ~ 10

6-734-7201

SPOOL ASSEMBLY

Key No.	Parts No.	Parts Name
1	000-8241	Drag knob
2	170-4511	Drag washer retainer
3	376-0101	Drag D washer
4	372-6504	Disc washer
5	375-5401	Drag A washer
6	372-3004	Drag washer A
*7	734-7301	Spool
8	145-2101	Spool click claw spring
9	807-8201	Spool click claw
10	320-1402	Spool click claw retainer
11	372-9601	Spool washer
12	711-5801	Main shaft
13	637-4111	Oscillating support
14	351-8901	Oscillating slider screw
15	340-8301	Rotor nut
16	202-1701	Rotor
17	363-3111	Bail screw
18	375-1101	Bail washer
19	231-3501	Arm lever
20	363-5201	Arm lever screw
21	501-2001	Roller collar
22	250-4501	Line roller
23	502-1401	Roller metal
24	725-8701	Bail
25	363-5201	Bail holder screw
26	145-2001	Bail spring
27	801-4001	Bail spring cover
28	352-2501	Bail spring cover screw
29	571-1201	Bail kick lever
30	041-9201	Bail kick lever cover
31	351-6101	Bail kick lever cover screw

Key No.	Parts No.	Parts Name
32	145-3001	Bail kick cam spring
33	571-1101	Bail kick cam
34	353-8201	Bail kick cam screw
35	502-1301	Spring holder
36	145-2901	Anti-reverse claw spring
37	810-0801	Ratchet
38	636-6711	Click gear
39	050-5101	Ball bearing ret. washer
40	351-6601	Ball bearing ret. washer screw
41	635-5001	Ball bearing
42	403-3301	Pinion gear
43	701-7101	Body
44	352-1102	Anti-reverse claw screw
45	041-9101	Anti-reverse claw plate
46	111-9201	Anti-reverse claw
47	351-6601	Cam kick plate screw
48	B22-9901	Cam kick plate
49	144-0321	Anti-reverse cam spring
50	B15-6402	Anti-reverse cam
51	373-2700	Anti-reverse lever washer
52	541-7301	Anti-reverse lever
53	352-2501	Anti-reverse lever screw
54	501-6101	Bearing metal
55	414-2901	Drive gear
56	481-2701	Oscillating slider
57	371-2800	Drive gear washer
58	501-6101	Bearing metal
59	707-1401	Body cover
60	351-5901	Body cover screw
61	748-1001	Handle
62	B07-4701	Handle screw cap

*Not sold separately. See Spool Assembly.