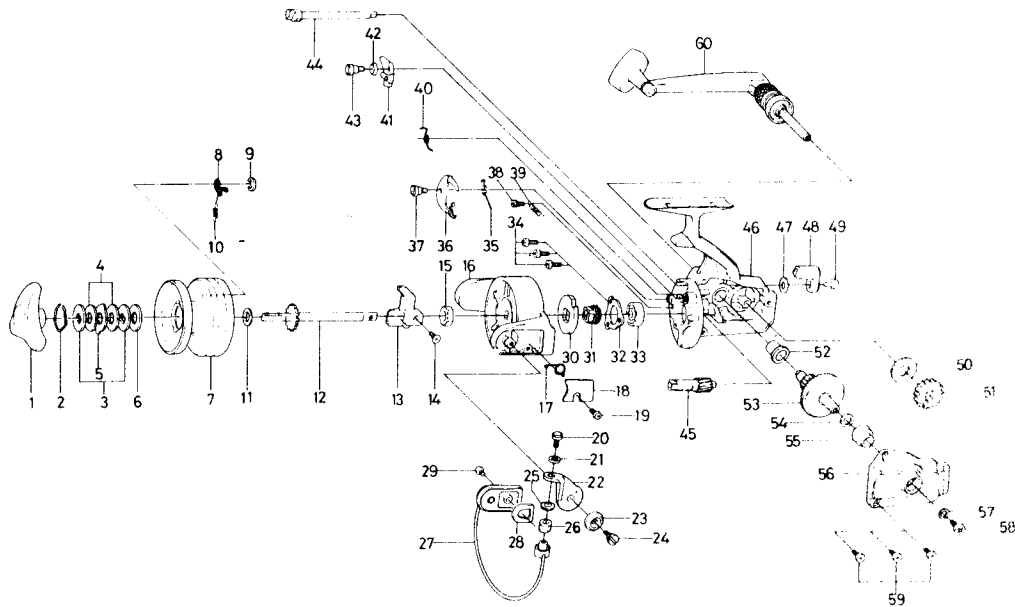


# SPINNING REEL 2600SC



**KEY NO. 2 ~ 10**  
**6-734-1603**

**SPOOL ASSEMBLY**

Key No.	Parts No.	Parts Name	Key No.	Parts No.	Parts Name
1	740-2103	Drag knob	31	B20-6301	Click gear
2	170-4001	Drag washer retainer	32	635-9901	Ball bearing ret. washer
3	373-2502	Drag D washer	33	636-6011	Ball bearing
4	374-2901	Disc washer	34	351-6601	Ball bearing ret. washer screw
5	375-5301	Drag A washer	35	144-0211	Click claw spring
6	370-6901	Drag washer A	36	770-0801	Click claw
7	734-1702	Spool	37	363-3013	Click claw screw
8	B07-8201	Spool click claw	38	363-3301	Click lever spring screw
9	320-1402	Spool click claw retainer	39	144-1211	Click lever spring
10	145-2101	Spool click claw spring	40	144-0321	Anti-reverse cam spring
11	374-9002	Spool washer	41	770-0731	Anti-reverse claw
12	710-9123	Main shaft	42	375-5200	Anti-reverse claw washer
13	481-0901	Oscillating slider	43	363-3601	Anti-reverse claw screw
14	351-8901	Oscillating slider screw	44	B15-6402	Anti-reverse cam
15	340-8301	Rotor nut	45	402-3201	Pinion gear
16	201-7711	Rotor	46	700-8103	Body
17	143-5311	Bail spring	47	373-2700	Anti-reverse lever washer
18	632-6411	Bail spring cover	48	541-1901	Anti-reverse lever
19	352-2501	Bail spring cover screw	49	352-2501	Anti-reverse lever screw
20	363-3111	Bail screw	50	374-6600	Oscillating gear washer
21	375-1101	Bail washer	51	412-3411	Oscillating gear
22	231-1901	Arm lever	52	501-6201	Bearing metal A
23	130-3201	Bail holder cap	53	413-1421	Drive gear
24	363-1901	Arm lever screw	54	371-2800	Drive gear washer
25	501-2001	Roller collar	55	501-6101	Bearing metal B
26	250-4321	Line roller	56	705-8806	Body cover
27	725-5621	Bail	57	371-9521	Handle washer
28	210-3111	Balancer	58	351-3631	Handle screw
29	351-6601	Bail holder screw	59	351-8501	Body cover screw
30	280-9202	Ratchet	60	746-8832	Handle