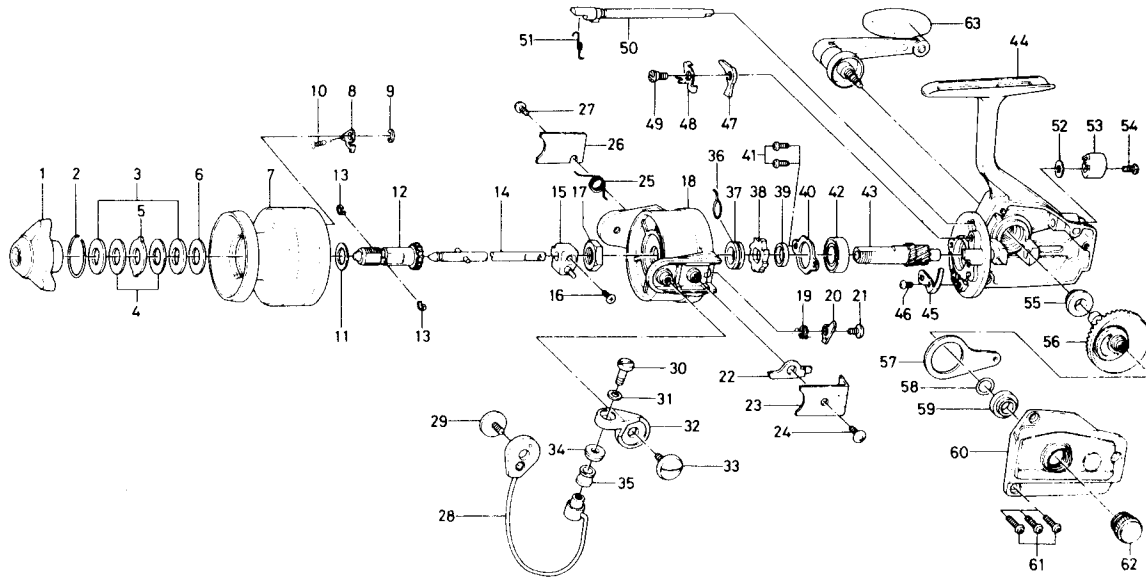


SPINNING REEL 1600X



KEY NO. 1 ~ 13
6-733-7904

SPOOL ASSEMBLY

Key No.	Parts No.	Parts Name
1	740-3801	Drag knob
2	170-4601	Drag washer retainer
3	374-4802	Drag D washer
4	373-3701	Disc washer
5	373-3603	Drag A washer
6	373-3704	Drag washer A
7	733-9004	Spool
8	307-5301	Spool click claw
9	320-5901	Spool click claw retainer
10	145-2101	Spool click claw spring
11	375-5701	Spool washer
12	720-1721	Spool metal
13	151-7211	Spool metal leaf spring
14	711-4601	Main shaft
15	637-0102	Oscillating support
16	351-5311	Oscillating slider screw
17	340-8301	Rotor nut
18	202-1135	Rotor
19	145-0701	Bail kick cam spring
20	571-0821	Bail kick cam
21	354-0701	Bail kick cam screw
22	B21-3101	Bail kick lever
23	041-7221	Bail kick lever cover
24	351-7701	Bail kick lever cover screw
25	145-1011	Bail spring
26	041-7301	Bail Spring Cover
27	351-7701	Bail spring cover screw
28	725-8111	Bail
29	363-5201	Bail holder screw
30	353-1811	Bail screw
31	375-1001	Bail washer
32	231-2901	Arm lever

Key No.	Parts No.	Parts Name
33	363-5201	Arm lever screw
34	501-1601	Roller collar
35	250-4211	Line roller
36	145-0901	Anti-reverse claw spring
37	501-9901	Spring holder
38	280-9001	Ratchet
39	501-9801	Spacer
40	321-0901	Ball bearing ret. washer
41	351-0901	Ball bearing ret. washer screw
42	635-4801	Ball bearing
43	403-2201	Pinion gear
44	701-5004	Body
45	B22-3101	Cam kick plate
46	351-6601	Cam kick plate screw
47	111-8201	Anti-reverse claw
48	041-7101	Anti-reverse claw plate
49	363-9301	Anti-reverse claw-screw
50	461-7101	Anti-reverse cam
51	144-0321	Anti-reverse cam spring
52	371-6903	Anti-reverse lever washer
53	541-6801	Anti-reverse lever
54	353-4401	Anti-reverse lever screw
55	637-4511	Bearing metal
56	414-1312	Drive gear
57	481-2101	Oscillating slider
58	637-4511	Bearing metal
59	375-8500	Drive gear washer
60	707-0202	Body cover
61	353-0001	Body cover screw
62	B03-4802	Handle screw cap
63	B15-8801	Handle