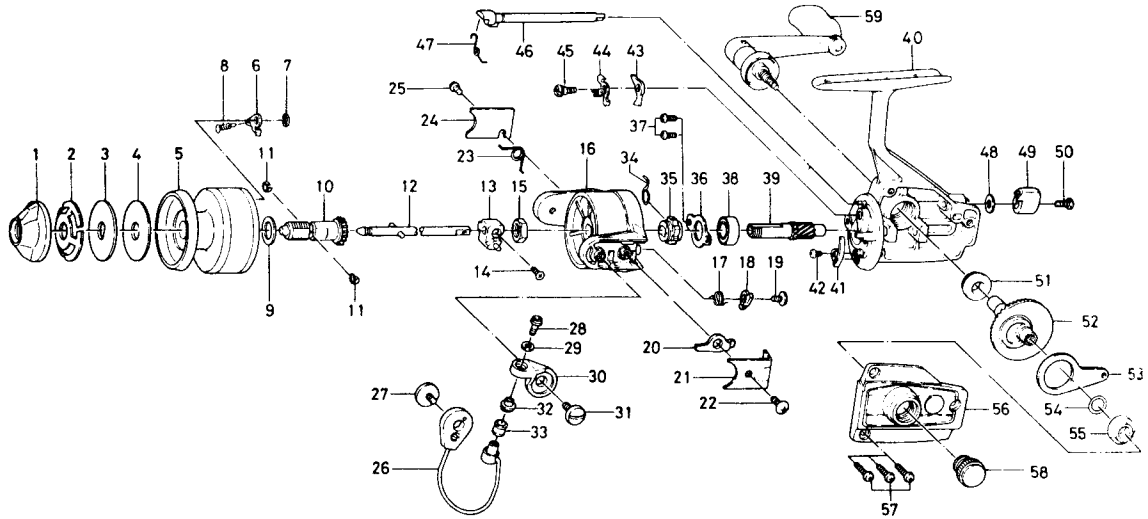


SPINNING REEL 1000X



KEY NO. 1 ~ 11 6-733-2005

SPOOL ASSEMBLY

Key No.	Parts No.	Parts Name	Key No.	Parts No.	Parts Name
1	441-5301	Drag knob	31	363-4301	Arm lever screw
2	151-7301	Drag spring washer	32	501-4411	Roller collar
3	375-6001	Drag D washer	33	250-4411	Line roller
4	375-5902	Disc washer	34	145-0501	Anti-reverse claw spring
5	733-8404	Spool	35	280-8901	Ratchet
6	B07-5301	Spool click claw	36	321-0801	Ball bearing ret. washer
7	320-5901	Spool click claw retainer	37	351-0901	Ball bearing ret. washer screw
8	145-2101	Spool click claw spring	38	636-6401	Ball bearing
9	375-5701	Spool washer	39	403-0701	Pinion gear
10	381-8621	Spool metal	40	701-5103	Body
11	151-7211	Spool metal leaf spring	41	B22-3201	Cam kick plate
12	711-4202	Main shaft	42	351-6601	Cam kick plate screw
13	636-7602	Oscillating support	43	111-8301	Anti-reverse claw
14	B12-8201	Oscillating slider screw	44	041-6801	Anti-reverse claw plate
15	341-9201	Rotor nut	45	363-8801	Anti-reverse claw screw
16	202-0922	Rotor	46	461-7302	Anti-reverse cam
17	145-0701	Bail kick cam spring	47	145-2701	Anti-reverse cam spring
18	571-0611	Bail kick cam	48	371-6903	Anti-reverse lever washer
19	354-0701	Bail kick cam screw	49	541-6801	Anti-reverse lever
20	571-0501	Bail kick lever	50	353-4401	Anti-reverse lever screw
21	041-7021	Bail kick lever cover	51	637-4511	Bearing metal
22	351-7701	Bail kick lever cover screw	52	414-0012	Drive gear
23	145-2601	Bail spring	53	481-1801	Oscillating slider
24	041-6901	Bail spring cover	54	637-4511	Bearing metal
25	351-7701	Bail spring cover screw	55	375-8500	Drive gear washer
26	725-8011	Bail	56	707-0301	Body cover
27	363-4301	Bail holder screw	57	353-0001	Body cover screw
28	363-4411	Bail screw	58	B03-4802	Handle screw cap
29	375-4301	Bail washer	59	B15-8601	Handle
30	231-2821	Arm lever			