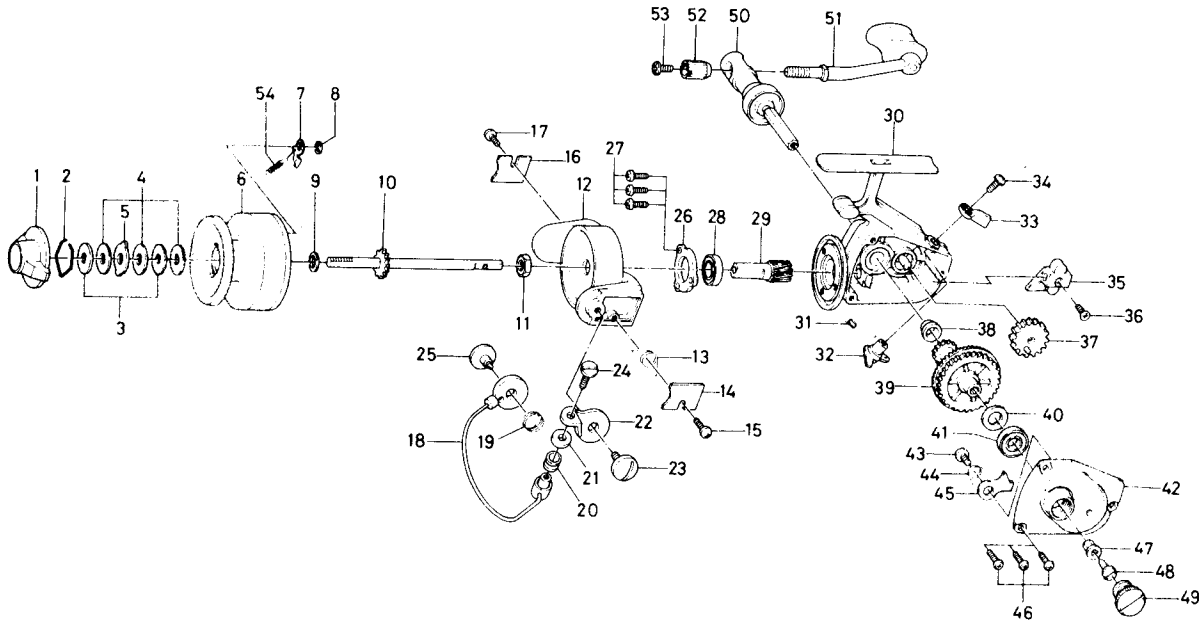


SPINNING REEL 1000C



KEY NO. 50 ~ 53
6747-6901

HANDLE ASSEMBLY

KEY NO. 2 ~ 8 & 54
6B26-0401

SPOOL ASSEMBLY

Key No.	Parts No.	Parts Name
1	740-2304	Drag knob
2	170-7701	Drag washer retainer
3	374-9802	Drag D washer
4	374-3602	Disc washer
5	374-3802	Drag A washer
6	B17-9401	Spool
7	B07-5302	Spool click claw
8	320-5901	Spool click claw retainer
9	372-3501	Spool washer
10	710-7801	Main shaft
11	341-9201	Rotor nut
12	735-4402	Rotor
13	143-9401	Bail spring
14	040-5001	Bail spring cover
15	351-1801	Bail spring cover screw
16	040-5001	Bail spring cover
17	351-1801	Bail spring cover screw
18	725-4711	Bail
19	143-9521	Arm lever spring
20	250-3921	Line roller
21	501-1401	Roller collar
22	231-1501	Arm lever
23	363-2201	Arm lever screw
24	353-1811	Bail screw
25	363-2201	Bail holder screw
26	634-1702	Bail bearing ret. washer
27	351-1001	Bail bearing ret. washer screw

Key No.	Parts No.	Parts Name
28	637-5701	Ball bearing
29	402-2201	Pinion gear
30	700-4715	Body
31	142-2801	Anti-reverse cam spring
32	460-6821	Anti-reverse cam
33	541-3132	Anti-reverse lever
34	351-4701	Anti-reverse lever screw
35	481-0521	Oscillating slider
36	351-0311	Oscillating slider screw
37	413-0101	Oscillating gear
38	636-4101	Bearing metal A
39	413-0221	Drive gear
40	370-5100	Drive gear washer
41	636-4401	Bearing metal B
42	705-7705	Body cover
43	351-7701	Anti-reverse claw screw
44	143-9601	Anti-reverse claw spring
45	111-3411	Anti-reverse claw
46	351-1001	Body cover screw
47	501-8501	Handle screw holder
48	363-8511	Handle screw
49	363-6001	Handle screw cap
50	071-2901	Handle stand
51	747-7001	Handle arm
52	342-3012	Handle arm ret. nut
53	353-0701	Handle arm ret. nut screw
54	144-1211	Spool click claw spring