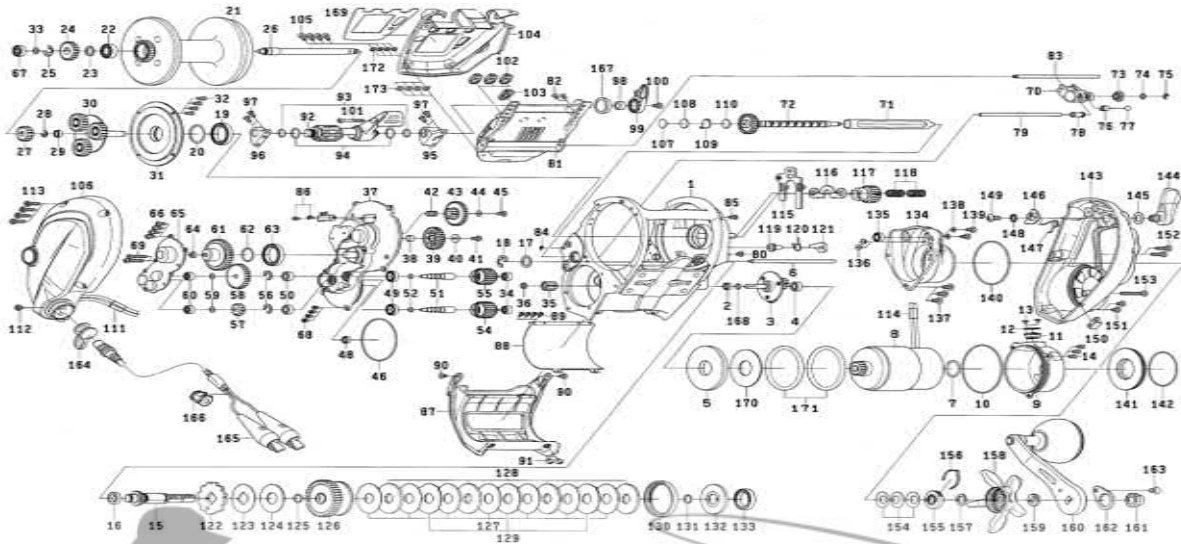


# DAEWOO

## ELECTRONIC REEL

# SB800MJ

Please order by parts number, not key number  
Veuillez indiquer le numéro de la pièce (Non "Key" No.)



Key No.	Part No.	Part Name	Key No.	Part No.	Part Name
1	J26-6601	FRAME	92	J27-1701	JOG POWER LEVER (A)
2	G46-9005	MOTOR GEAR (B) BALL BEARING	93	H71-4501	JOG POWER LEVER O RING
3	J26-7001	MOTOR MOTOR TRANSMISSION GEAR A	94	F95-6201	JOG POWER LEVER WASHER
4	B35-8605	MOTOR GEAR (A) BALL BEARING	95	J29-1801	JOG POWER LEVER HOLDER (B)
5	J26-7401	MOTOR PLATE	96	J29-3001	JOG POWER LEVER HOLDER (L)
6	J26-7501	LINE GUARD POST	97	B55-7607	JOG POWER LEVER HOLDER SCREW
7	G37-8001	MOTOR O RING (A)	98	F59-0101	JOG POWER LEVER COLLAR
8	J26-7601	MOTOR ASSY	99	J27-2101	JOG POWER LEVER (B)
9	J26-7901	MOTOR HOLDER	100	H75-3310	JOG POWER LEVER (B) SCREW
10	F59-5801	MOTOR HOLDER O RING	101	J32-6101	JOG POWER LEVER SCREW
11	J26-8001	MOTOR HOLDER PACKING	102	J27-2201	PUSH BUTTON
12	373-7810	MOTOR HOLDER PACKING WASHER	103	J27-2301	SHIFT SWITCH BUTTON
13	F153-1504	MOTOR HOLDER PACKING SCREW	104	J27-2502	IC MODULE COVER
14	E13-4509	MOTOR HOLDER SCREW	105	G94-5813	IC MODULE COVER SCREW
15	J26-8101	DRIVE SHAFT	106	J40-3001	L/S COVER
16	G96-1301	DRIVE SHAFT COLLAR	107	F67-3802	MECHANICAL BRAKE KNOB WASHER (A)
17	373-7808	DRIVE SHAFT WASHER	108	B17-5501	MECHANICAL BRAKE KNOB WASHER (B)
18	B01-3101	DRIVE SHAFT RETAINER	109	J05-6901	MECHANICAL BRAKE KNOB WASHER (C)
19	E29-2701	SPOOL PLATE BALL BEARING	110	G22-5103	MECHANICAL BRAKE KNOB WASHER (D)
20	F68-2601	SPOOL PLATE WASHER	111	G07-9502	SHRINK TUBING WRAP
21	J26-8301	SPOOL ASSY	112	H75-3310	L/S PLATE SCREW (A)
22	J03-0301	SPOOL SHAFT BALL BEARING (A)	113	H75-3311	L/S PLATE SCREW (B)
23	E15-4801	SPOOL SHAFT GEAR WASHER	114	G07-9502	SHRINK TUBING WRAP
24	G67-5001	SPOOL SHAFT GEAR (B)	115	J27-3501	YOKE PLATE
25	320-1611	SPOOL SHAFT GEAR RETAINER	116	J27-3701	PINION YOKE
26	J26-8701	SPOOL SHAFT	117	J27-3801	PINION GEAR
27	J26-8801	SPOOL SHAFT GEAR (A)	118	G47-3401	PINION YOKE SPRING
28	320-1402	SPOOL SHAFT GEAR (A) RETAINER	119	F77-3001	A/R PIN
29	G46-9005	SPOOL GEAR BALL BEARING	120	G67-7701	A/R SPRING
30	J26-8901	SPOOL TRANSMISSION GEAR	121	J56-6301	A/R CLAW
31	J26-9501	SPOOL COVER PLATE	122	J27-3901	RATCHET
32	E13-4505	SPOOL COVER PLATE SCREW	123	J27-4101	RATCHET WASHER
33	F35-2701	SPOOL SHAFT WASHER	124	J27-4201	DRIVE GEAR WASHER
34	E08-8005	MOTOR GEAR BALL BEARING	125	H15-6901	DRIVE SHAFT O RING
35	J26-9601	MOTOR GEAR (B)	126	J27-4301	DRIVE GEAR
36	B41-1711	MOTOR GEAR (B) WASHER	127	H47-0801	DRAG SHAFT
37	J26-9701	SET PLATE (A)	128	H47-0902	DRAG DISC WASHER
38	F57-3101	IDLE GEAR (A) COLLAR	129	H47-1002	DRAG KEY WASHER
39	F59-2101	IDLE GEAR (A)	130	J27-4401	DRAG PACKKING
40	F40-0201	IDLE GEAR (A) WASHER	131	H15-6901	DRAG O RING
41	G94-0404	IDLE GEAR (A) SCREW	132	J27-4501	DRAG COLLAR
42	G07-6501	IDLE GEAR (B) COLLAR	133	G07-4101	BALL BEARING
43	G67-3301	IDLE GEAR (B)	134	J27-4602	R/S COVER A
44	B55-4302	IDLE GEAR (B) WASHER	135	G31-4902	R/S COVER A BALL BEARING
45	G94-0404	IDLE GEAR (B) SCREW	136	G94-0405	R/S COVER A BALL BEARING SCREW
46	G15-8601	SET PLATE O RING	137	351-6108	R/S COVER A SCREW (A)
47			138	G28-1401	R/S COVER A SCREW (B) WASHER
48	G46-9005	SET PLATE BALL BEARING	139	H75-3310	R/S COVER A SCREW (B)
49	G52-2702	MOTOR GEAR SHAFT BALL BEARING	140	J32-6601	R/S COVER A O RING
50	B35-8605	SET PLATE GEAR BALL BEARING	141	J27-4801	MOTOR HOLDER PLATE
51	J27-0001	MOTOR GEAR SHAFT	142	F46-5901	MOTOR HOLDER PLATE O RING
52	H07-8001	MOTOR GEAR SHAFT O RING	143	J27-4901	R/S COVER B
53			144	J27-5001	CLUTCH LEVER
54	G67-4101	MOTOR GEAR (HIGH)	145	J26-8201	CLUTCH LEVER WASHER
55	G67-4401	MOTOR GEAR (LOW)	146	F59-7901	CLUTCH CAM
56	320-8002	MOTOR GEAR SHAFT RETAINER	147	J27-5301	CLUTCH CAM SPRING
57	G67-4001	IDLE GEAR (C)	148	160-8001	CLUTCH CAM WASHER
58	G67-3901	IDLE GEAR (D)	149	353-8212	CLUTCH CAM SCREW
59	F88-9103	IDLE GEAR WASHER	150	E28-6001	LINE HOLDER
60	E08-8005	IDLE GEAR BALL BEARING	151	H75-3310	R/S COVER B SCREW (A)
61	J27-0101	IDLE GEAR (E)	152	H75-3311	R/S COVER B SCREW (B)
62	G67-2401	IDLE GEAR (E) O RING	153	H75-3312	R/S COVER B SCREW (C)
63	E29-2701	IDLE GEAR (E) BALL BEARING	154	F67-3601	DRAG SPRING WASHER
64	G07-7201	IDLE GEAR (E) COLLAR	155	H69-1901	CLICK LEAF SPRING HOLDER
65	J27-0301	SET PLATE (B)	156	H93-3201	CLICK LEAF SPRING
66	B55-7607	SET PLATE (B) SCREW	157	J27-9501	SPACING SLEEVE
67	G37-2102	SPOOL SHAFT BALL BEARING (B)	158	J27-5601	STAR DRAG
68	E13-4508	SET PLATE SCREW (A)	159	F86-3202	HANDLE COLLAR
69	G78-5801	SET PLATE SCREW (B)	160	J27-5801	HANDLE
70	J27-0401	LEVEL WIND ASSY	161	G63-4603	HANDLE NUT
71	J27-0701	WORM SHAFT GUARD	162	B88-4703	HANDLE NUT PLATE
72	J27-0801	WORM SHAFT ASSY	163	J31-6701	HANDLE NUT PLATE SCREW
73	F46-7201	WORM SHAFT COLLAR	164	J18-4201	CONNECTOR CAP
74	B41-1706	WORM SHAFT WASHER	165	J32-3801	POWER CORD
75	320-5901	WORM SHAFT RETAINER	166	G90-5401	POWER CORD FERRITE
76	J27-1201	OSC PAWL	167	J26-6901	JOG POWER LEVER RING
77	G09-9801	OSC PAWL WASHER	168	H74-4801	MOTOR GEAR (A) SPRING WASHER
78	J27-1301	LEVEL WIND POST COLLAR	169	J27-2603	IC MODULE COVER PLATE
79	J27-1401	LEVEL WIND POST	170	J58-1201	MOTOR WASHER
80	G94-0405	LEVEL WIND POST SCREW	171	F58-1601	MOTOR O RING (B)
81	J27-1502	IC MODULE	172	B53-6103	IC MODULE COVER SCREW WASHER A
82	E13-4508	IC MODULE SCREW	173	B55-4301	IC MODULE COVER SCREW WASHER B
83	J27-1601	IC MODULE POST	201	J01-4402	ROD CLAMP
84	B86-4101	IC MODULE POST RETAINER	202	F18-7601	ROD CLAMP SCREW
85	B55-7606	SENSOR SCREW (A)	203	B93-7802	ROD CLAMP SCREW WASHER
86	H15-8201	SENSOR SCREW (B)	204	F18-7801	ROD CLAMP SCREW NUT
87	J27-5401	FRONT COVER	205	J41-5801	CLAMP SCREW NUT (SHORT)
88	J27-5501	MOTOR GUARD PLATE	206	J41-5802	CLAMP SCREW NUT (LONG)
89	H58-5401	MOTOR GUARD PLATE SCREW	207	X09-0801	LINE THREADER
90	H45-5408	FRONT COVER SCREW (A)	208	G62-6201	ROD CLAMP TOOL
91	F50-5705	FRONT COVER SCREW (B)			