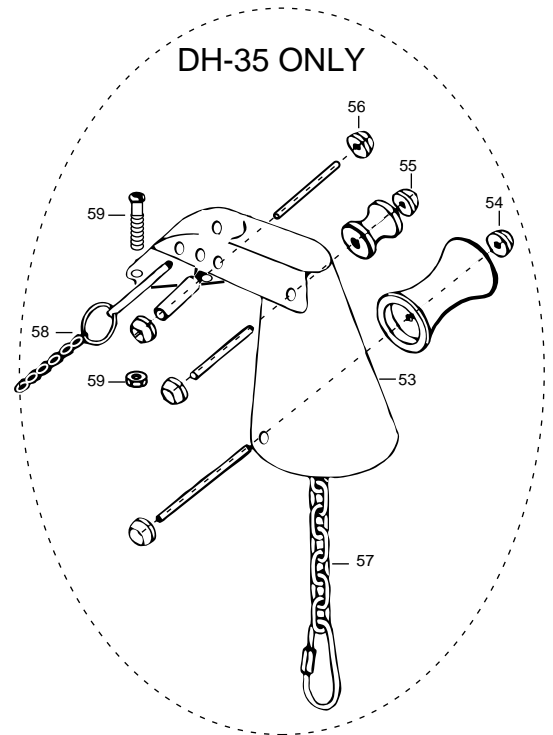
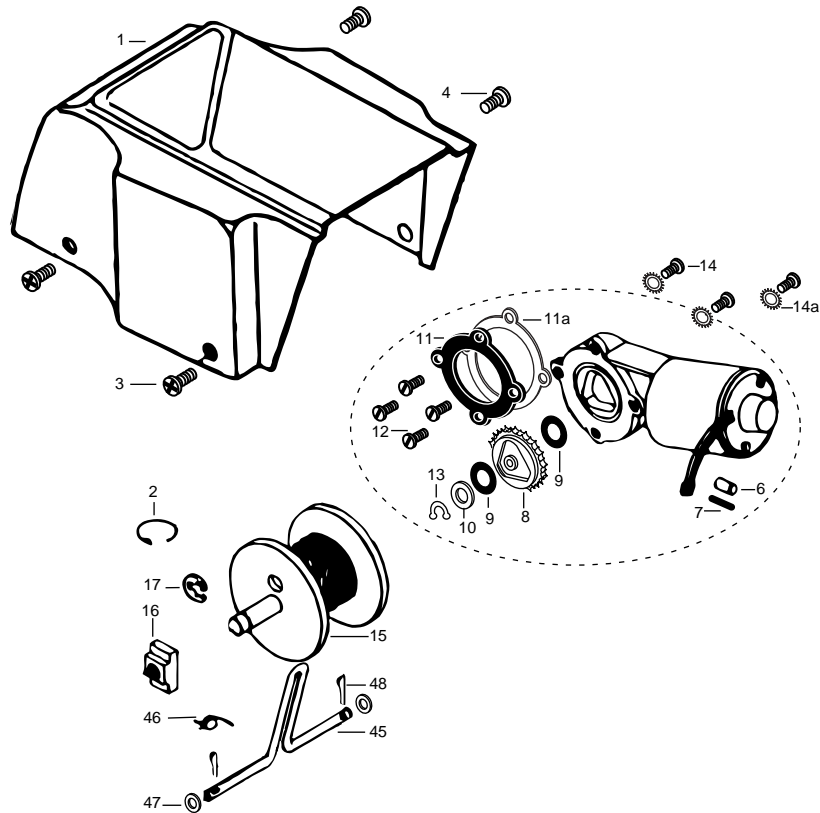
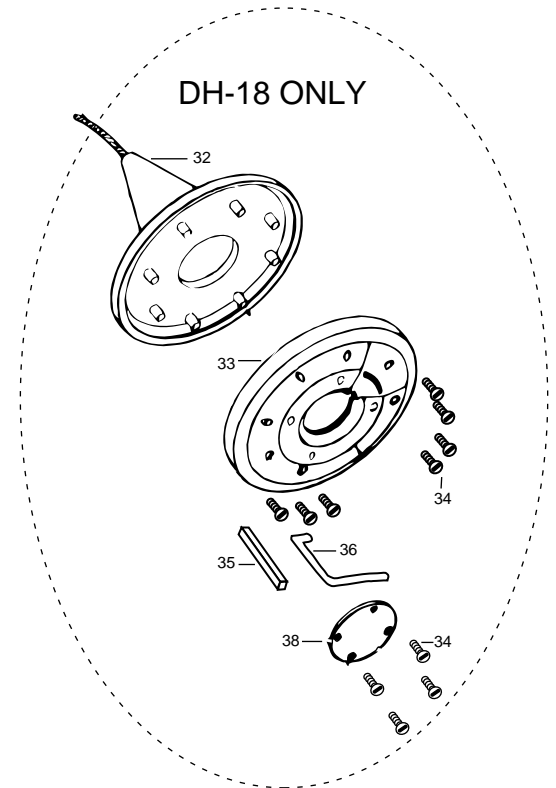
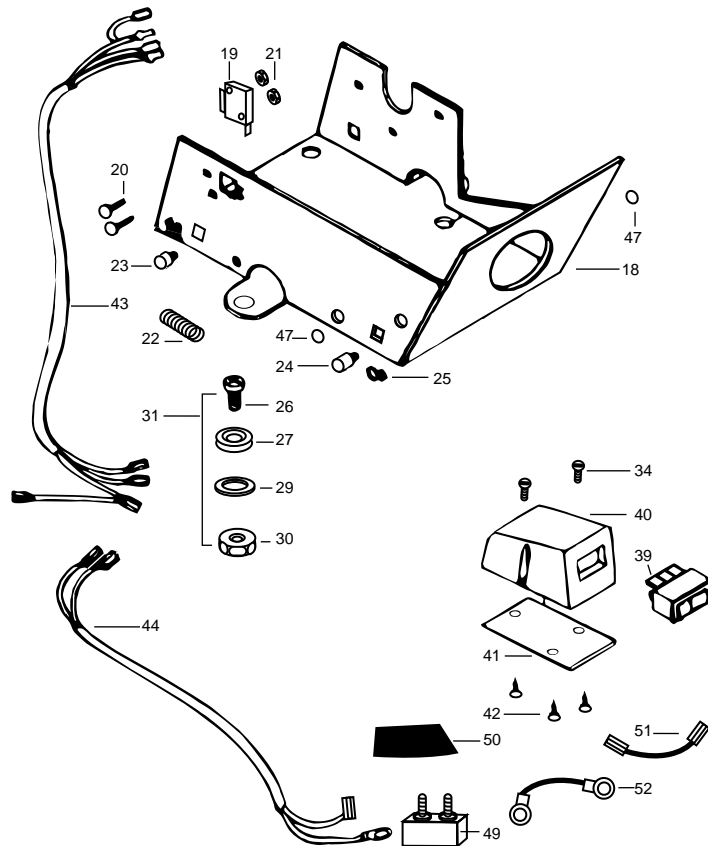


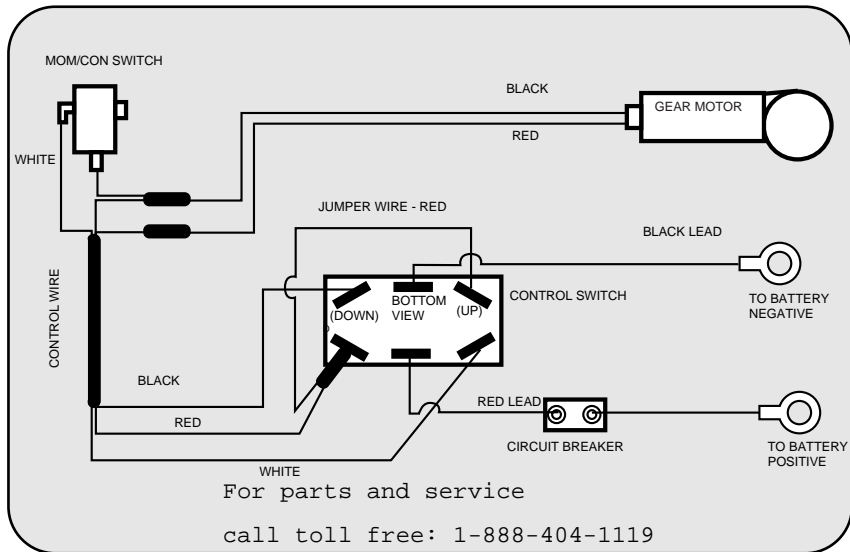
For parts and service
call toll free: 1-888-404-1119
www.mikesreelrepair.com





For parts and service
call toll free: 1-888-404-1119
www.mikesreelrepair.com

Item	Part	Description	
1	237-0200	Cover DH-18	www.mikesreelrepair.com
	237-0201	Cover DH-35	
2	230-3005	Pig Ring (2 .ea DH-18)	
	230-3006	Pig Ring (2 .ea DH-35)	
3	237-2121	Screw-#8-18x 1-1/2 Stallgrd (2 .ea)	
4	237-2111	Screw-#8-18x3/4 Stallgrd (2 .ea)	
■	237-7800	Motor Assembly - DeckHand- Includes 6-13	
6	237-5400	Shrink Tube 1/4x1-3/4 (2 .ea)	
7	235-5410	Shrink Tube 3/8x2 (DH-35)	
8	350-154	Gear	
9	990-077	Washer - Nylatron (2 .ea)	
10	990-075	Washer - Steel	
11	337-015	Gasket	
11a	410-015	Cover-Housing	
12	830-036	Screw - 10-32x.375 (4.ea)	
13	237-3002	Snap Ring	
14	222-3455	Screw-#10-32x1/2 (3 .ea)	
14a	226-1718	Washer- Lock Star #10 Ext Tooth 3.ea)	
15	237-7900	Spool includes 60' rope	
16	237-0000	Bearing-Spool	
17	226-3010	E-Ring 3/8 Dia Shaft	
18	237-1900	Base- Mounting E-Coat	
19	237-4010	Switch-Momentary Anchor	
20	237-2130	Screw-#4-40x3/4 PPH (2 .ea)	
21	237-3100	Nut-Con/Mom Swt Anchor (2 .ea)	
22	237-2700	Spring-Anchor	
23	237-2900	Grommet-Anchor Cover Short (2 .ea)	
24	237-2910	Grommet-Anchor Cover Long (2 .ea)	
25	237-6300	Wire- Routing Clip (2 .ea)	
■	299-4803	Bag Assembly (includes 26-30)	
26	215-3501	Bolt- Mounting 3500 w/stallgd (4 .ea)	
27	230-1720	Mounting Washer-Rubber (6 .ea)	
29	215-1726	Washer 5/16 STD SS (4 .ea)	
30	215-3100	Nut 5/16 (4 .ea)	
32	237-8000	Anchor-Upper Half	
33	237-8100	Anchor-Lower Half	
34	237-2100	Screw #8-18x5/8 (as required)	
35	237-2800	Keeper Block	
36	237-3600	Lock Pin-Anchor	
38	237-6700	Plug-Anchor	
39	237-4000	Switch-Control Anchor	
40	237-6500	Switch Housing (DH- 18)	
	237-6501	Switch Housing (DH-35)	
41	237-6510	Switch Plate	
42	237-2150	Screw-Switch Plate 6-20x1/2 (3 .ea)	
43	237-0700	Control Wire (DH-18)	
	237-0701	Control Wire (DH-35)	
44	237-0602	Leadwire (DH- 18)	
	237-0603	Leadwire (DH-35)	
45	237-1610	Rope Guide	
46	237-2710	Spring-Rope Guide	
47	215-1700	Washer- Eye Shaft (2 .ea)	
48	237-2615	Cotter Pin 3/32x3/4 (2 .ea)	
49	237-8202	Circuit Breaker	
50	237-2031	Tubing- Heat Shrink	
51	237-0300	Connecting Wire	
52	237-1412	Connecting Cable 14ga (DH-18)	
	237-1410	Connecting Cable 10ga (DH-35)	
53	237-8410	Davit Assembly	
54	277-4800	Large Roller Assembly	
55	277-4801	Small Roller Assembly	
56	277-4802	Sleeve Roller Assembly	
57	277-4803	Safety Chain Assembly	
58	277-4804	Safety Pin Assembly	
59	277-4805	Mounting Bolts and Nuts (4 each)	
■	299-4804	Bag Assembly -DH 18 (anc. plug + screws)	



For parts and service

call toll free: 1-888-404-1119

www.mikesreelrepair.com