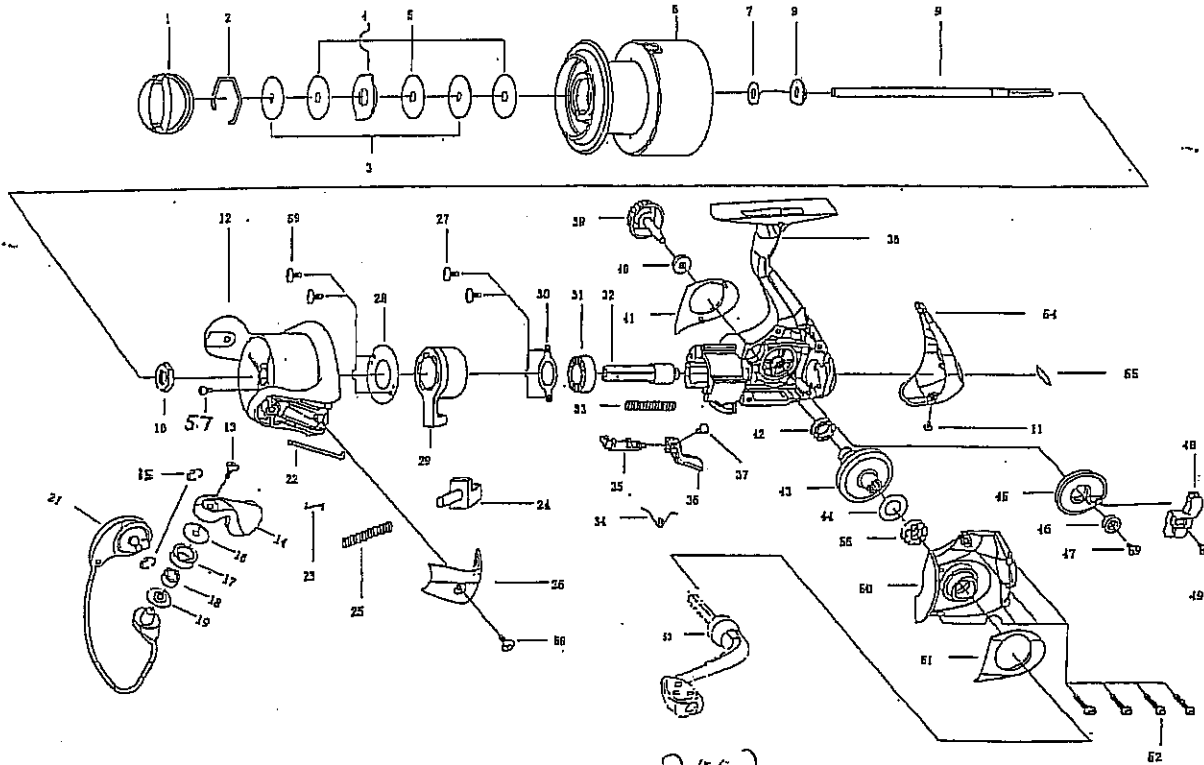


CARDINAL REEL
102/103/104/105/106FD

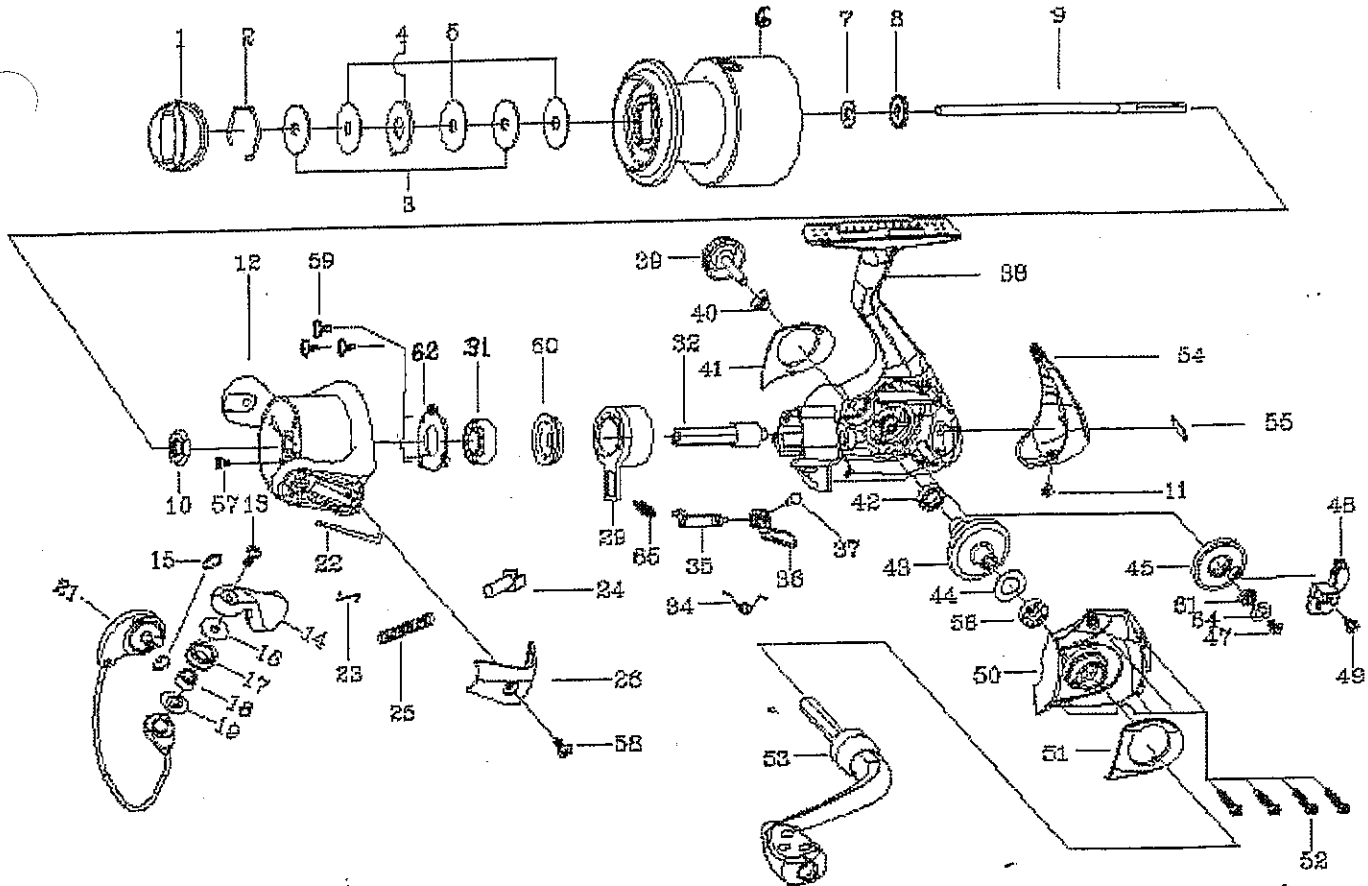
EXPLODED VIEW



2002

C102/103/104/105/106 FD

NO	DESCRIPTION	C102	C103	C104	C105	C106	NO	DESCRIPTION	C102	C103	C104	C105	C106
1	drag knob	1085265	1085265	1085265	1085294	1085294	29	one way ball bearing	1085279	1085279	1085279	1085307	1085307
2	retainer ring	1082606	1085295	1085295	1085295	1085295	30	retainer ring	1085332	1085332	1085332	1085332	1085332
3	washer	1082607	1085296	1085296	1085296	1085296	31	ball bearing	1085280	1085280	1085280	1085308	1085308
4	washer	1082608	1085297	1085297	1085297	1085297	32	pinion gear	1092714	1092714	1092714	1092764	1092764
5	washer	1082709	1085298	1085298	1085298	1085298	33	spring	1085333	1085333	1085333	1085333	1085333
6	Spool Assembly	1085346	1085347	1085348	1085349	1085350	34	spring	1085334	1085334	1085334	1085334	1085334
7	Spool Assy Poly.	1091642	1091643	1091644	1091645	1091646	35	anti-reverse pin	1085335	1085335	1085335	1085335	1085335
8	click gear	1085271	1085271	1085271	1085300	1085300	36	anti-reverse lever	1092716	1092716	1092716	1092766	1092766
9	main shaft	1085272	1085272	1085272	1092761	1092762	37	screw	1092777	1092777	1092777	1092777	1092777
10	rotor nut	1085273	1085273	1085273	1085302	1085302	38	body	1085283	1085283	1085283	1085311	1085311
11	screw	1092710	1092710	1092710	1092763	1092763	39	handle screw cap	1092778	1092778	1092778	1092778	1092778
12	rotor	1085351	1085352	1085353	1085354	1085355	40	washer	1092781	1092781	1092781	1092781	1092781
13	screw	1085322	1085322	1085322	1085322	1085322	41	body decoration plate	1092719	1092719	1092719	1092769	1092769
14	ball arm	1085275	1085275	1085275	1085304	1085304	42	bushing	1092724	1092724	1092724	1085313	1085313
15	ring	1085323	1085323	1085323	1085323	1085323	43	drive gear	1085286	1085286	1085286	1085314	1085314
16	bushing	1085324	1085324	1085324	1085324	1085324	44	washer	1085287	1085287	1085287	1085315	1085315
17	line roller	1092773	1092773	1092773	1092779	1092773	45	oscillation gear	1085288	1085288	1085288	1085316	1085316
18	ball bearing	1085325	1085325	1085325	1085326	1085326	46	bushing	1092722	1092722	1092722	1092722	1092722
19	bushing	1085327	1085327	1085327	1085327	1085327	47	screw	1092783	1092783	1092783	1092784	1092784
20	BAIL ASSY	1085276	1085276	1085305	1085305	1085305	48	slider	1085289	1085289	1085289	1085317	1085317
21	ball lever	1085356	1085357	1085358	1092785	1085356	49	screw	1085341	1085341	1085341	1085341	1085341
22	slider lever	1085329	1085329	1085329	1085329	1085329	50	body cap	1092757	1092758	1085634	1085635	1085635
23	slider	1085330	1085330	1085330	1085330	1085330	51	body cap decoration plate	1092759	1092759	1092759	1092771	1092771
24	spring	1085277	1085277	1085277	1085306	1085306	52	cap	1085342	1085342	1085342	1085342	1085342
25	rotor cover	1082712	1082712	1082712	1082787	1082789	53	handle assembly	1085292	1085292	1085292	1085320	1085320
26	screw	1092775	1092775	1092775	1092775	1092775	54	rear cover	1085293	1085293	1085293	1085321	1085321
27	one way retainer ring	1085331	1085331	1085331	1085331	1085331	55	logo plate	1085343	1085343	1085343	1085343	1085343
							56	ball bearing	1085344	1085344	1085344	1085344	1085344
							57	screw	1085900	1085900	1085900	1085900	1085900
							58	screw	1092845	1092845	1092845	1092845	1092845
							59	screw	1092844	1092844	1092844	1092844	1092844



C102/103/104/105/106 FD

2003

NO	DESCRIPTION	6					NO	DESCRIPTION	6				
		C102	C103	C104	C105	C106			C102	C103	C104	C105	C106
1	drag knob	1085265	1085265	1085265	1085294	1085294	35	anti-reverse pin	1098575	1098575	1098575	1098575	1098575
2	retainer ring	1092606	1085295	1085295	1085295	1085295	36	anti-reverse lever	1092716	1092716	1092716	1092766	1092766
3	washer	1092607	1085296	1085296	1085296	1085296	37	screw	1092777	1092777	1092777	1092777	1092777
4	washer	1092608	1085297	1085297	1085297	1085297	38	body	1098635	1098635	1098635	1098636	1098636
5	washer	1092709	1085298	1085298	1085298	1085298	39	handle screw cap	1092778	1092778	1092778	1092778	1092778
6	Spool Assembly	1085346	1085347	1085348	1085348	1085350	40	washer	1092781	1092781	1092781	1092781	1092781
6	Spool Assy Poly.	1091642	1091643	1091644	1091645	1091646	41	body decoration plate	1092719	1092719	1092719	1092769	1092769
7	washer	1085270	1085270	1085270	1085299	1085299	42	ball bearing	1092725	1092725	1092725	1090557	1090557
8	click gear	1085271	1085271	1085271	1085300	1085300	43	drive gear	1085286	1085286	1085286	1085314	1085314
9	main shaft	1085272	1085272	1085272	1092761	1092762	44	washer	1085287	1085287	1085287	1085315	1085315
10	rotor nut	1085273	1085273	1085273	1085302	1085302	45	oscillation gear	1085288	1085288	1085288	1085316	1085316
11	screw	1092710	1092710	1092710	1092763	1092763	47	screw	1092783	1092783	1092783	1092784	1092784
12	rotor	1098653	1098654	1098655	1098656	1098657	48	slider	1085289	1085289	1085289	1085317	1085317
13	screw	1085322	1085322	1085322	1085322	1085322	49	screw	1085341	1085341	1085341	1085341	1085341
14	ball arm	1098576	1098576	1098576	1098578	1098578	50	body cap	1092757	1092756	1085634	1085635	1085636
15	ring	1085323	1085323	1085323	1085323	1085323	51	body cap decoration plate	1092759	1092759	1092759	1092771	1092771
16	bushing	1098664	1098664	1098664	1098664	1098664	52	screw	1085342	1085342	1085342	1085342	1085342
17	line roller	1092773	1092773	1092773	1092773	1092773	53	handle assembly	1085292	1085292	1085292	1085320	1085320
18	ball bearing	1085325	1085326	1085326	1085326	1085326	54	rear cover	1085293	1085293	1085293	1085321	1085321
19	bushing	1085327	1085327	1085327	1085327	1085327	55	logo plate	1085343	1085343	1085343	1085343	1085343
21	BAIL ASSY	1098665	1098665	1098667	1098668	1098669	56	ball bearing	1085344	1085344	1085344	1085344	1085344
22	ball lever	1085355	1085357	1085358	1092785	1085360	57	screw	1085900	1085900	1085900	1085900	1085900
23	slider lever	1085329	1085329	1085329	1085329	1085329	58	screw	1092845	1092845	1092845	1092845	1092845
24	slider	1085330	1085330	1085330	1085330	1085330	59	screw	1092844	1092844	1092844	1092844	1092844
25	spring	1085277	1085277	1085277	1085306	1085306	60	bearing retainer	1098660	1098660	1098660	1098660	1098660
26	rotor cover	1092712	1092712	1092712	1092787	1092789	61	ball bearing	1098658	1098658	1098658	1098658	1098658
29	one way ball bearing	1098647	1098647	1098647	1098648	1098648	62	one way retainer ring	1098661	1098661	1098661	1098661	1098661
31	ball bearing	1085280	1085280	1085280	1085308	1085308	64	washer	1098662	1098662	1098662	1098662	1098662
32	pinion gear	1098651	1098651	1098651	1098652	1098652	65	Spring	1080731	1080731	1080731	1080731	1080731
34	spring	1085334	1085334	1085334	1085334	1085334							

At the top of each column, per reel model is a number, this number represents the quantity of bearing drive for that reel model. Ask the customer to look at the Rotor for the quantity of bearing drive stated on the rotor for their reel, if the number matches use this schematic. If the customer states to you a quantity of 2 less than what is stated on this schematic, you must use the old schematics.