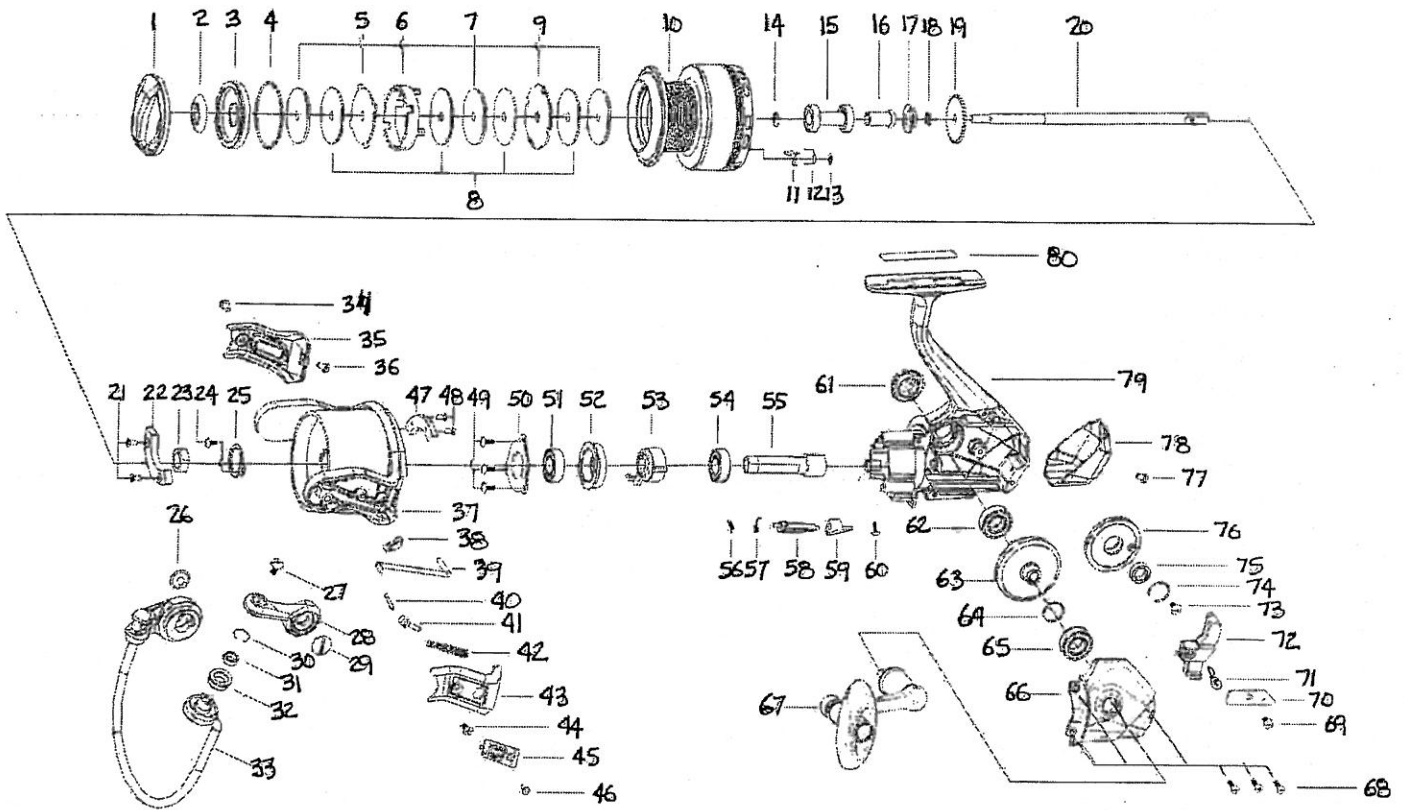


# EXPLODED VIEW C704 LX



| ITEM# | DESCRIPTION           | C704LX  | ITEM# | DESCRIPTION            | C704LX  | ITEM# | DESCRIPTION           | C704LX  |
|-------|-----------------------|---------|-------|------------------------|---------|-------|-----------------------|---------|
| 1     | DRAG KNOB ASSY        | 1133587 | 27    | SCREW                  | 1126261 | 54    | BALL BEARING          | 1126279 |
| 2     | WATERPROOF RING       | 1126240 | 28    | BAIL ARM               | 1133591 | 55    | PINION GEAR           | 1126354 |
| 3     | SPOOL COVER           | 1128141 | 29    | SCREW                  | 1126260 | 56    | OWC BEARING SPRING    | 1128144 |
| 4     | "O" RING              | 1126303 | 30    | "C" RETAINER           | 1126263 | 57    | SPRING                | 1102147 |
| 5     | EARED WASHER          | 1126337 | 31    | BALL BEARING           | 1126264 | 58    | ANTI-REVERSE LEVER    | 1126283 |
| 6     | DRAG KEY RING         | 1126338 | 32    | LINE ROLLER            | 1126265 | 59    | ANTI-REVERSE BUTTON   | 1133581 |
| 7     | KEY WASHER            | 1126304 | 33    | BAIL ASSY              | 1140839 | 60    | SCREW                 | 1111492 |
| 8     | WASHER                | 1126305 | 34    | SCREW                  | 1126267 | 61    | HANDLE SCREW CAP      | 1133582 |
| 9     | EARED WASHER          | 1126307 | 35    | ROTOR COVER            | 1133703 | 62    | BALL BEARING          | 1126286 |
| 10    | SPOOL ASSY ALUM       | 1133698 | 36    | SCREW                  | 1126321 | 63    | DRIVE GEAR            | 1126328 |
| 10    | SPOOL ASSY ALUM SPARE | 1133699 | 37    | ROTOR W/WEIGHTS        | 1140840 | 64    | WASHER                | 1085287 |
| 11    | CLICK GEAR            | 1126248 | 38    | BALANCE BLOCK          | 1140841 | 65    | BALL BEARING          | 1126279 |
| 12    | CLICK SPRING          | 1126340 | 39    | KICK LEVER             | 1126347 | 66    | BODY COVER            | 1133706 |
| 13    | "O" RETAINER          | 1126250 | 40    | BAIL LEVER             | 1126271 | 67    | HANDLE ASSY           | 1133707 |
| 14    | "C" RETAINER          | 1126310 | 41    | BAIL SLIDER            | 1128143 | 68    | SCREW                 | 1129803 |
| 15    | SLEEVE                | 1133700 | 42    | SPRING                 | 1126348 | 69    | SCREW                 | 1126292 |
| 16    | RETAINER SLEEVE       | 1126341 | 43    | ROTOR COVER            | 1133705 | 70    | SLIDER RETAINER       | 1126332 |
| 17    | WATERPROOF RING       | 1126314 | 44    | SCREW                  | 1126275 | 71    | SCREW                 | 1126275 |
| 18    | WATERPROOF RING       | 1128142 | 45    | ROTOR LOGO PLATE       | 1126350 | 72    | SLIDER                | 1126357 |
| 19    | CLICK GEAR            | 1126316 | 46    | SCREW                  | 1126267 | 73    | SCREW                 | 1126295 |
| 20    | MAIN SHAFT            | 1126342 | 47    | BALANCE BLOCK          | 1140842 | 74    | "C" RETAINER          | 1128147 |
| 21    | SCREW                 | 1092784 | 48    | SCREW                  | 1112126 | 75    | BALL BEARING          | 1112125 |
| 22    | BALANCE BLOCK         | 1140838 | 49    | SCREW                  | 1126351 | 76    | OSCILLATION GEAR      | 1126358 |
| 23    | NUT                   | 1085273 | 50    | BALL BEARING RETAINER  | 1126352 | 77    | SCREW                 | 1126297 |
| 24    | SCREW                 | 1126343 | 51    | BALL BEARING           | 1126279 | 78    | REAR COVER            | 1133708 |
| 25    | NUT RETAINER          | 1126259 | 52    | BALL BEARING HOLDER    | 1126353 | 79    | BODY                  | 1133709 |
| 26    | SCREW                 | 1126260 | 53    | ONE WAY CLUTCH BEARING | 1108907 | 80    | BODY DECORATION PLATE | 1126300 |