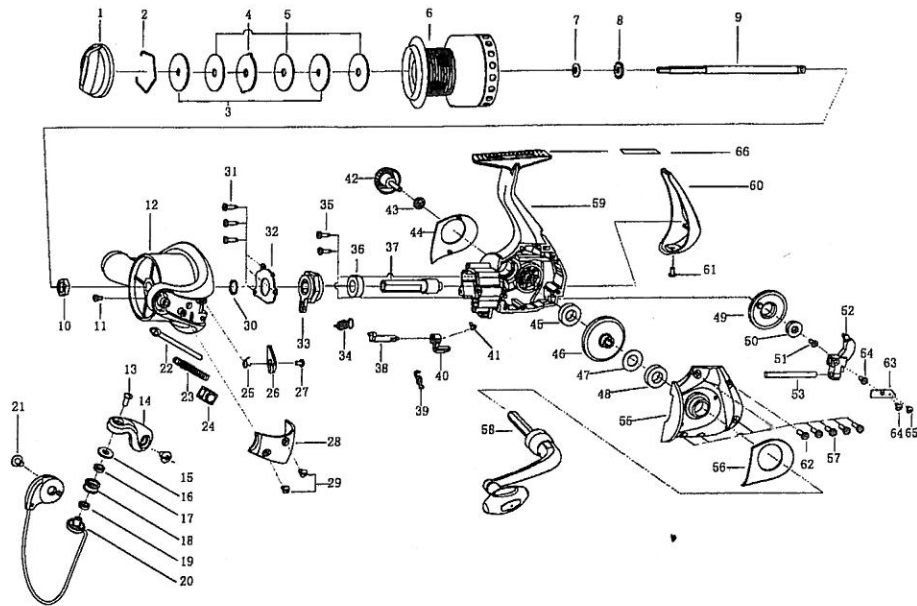


C178SWi

C177SWi / C178SWi



PARTS LIST OF 177i/178i

NO	DESCRIPTION	C177i	C178i	NO	DESCRIPTION	C177i	C178i
1	DRAG KNOB	1111424	1111424	34	SPRING	1111484	1111484
2	SPOOL RETAINER	1111425	1111425	35	SCREW	1111485	1111485
3	WASHER	1111426	1111426	36	BALL BEARING	1111486	1111486
4	EARED WASHER	1111427	1111427	37	PINION GEAR	1111487	1111488
5	WASHER	1111428	1111428	38	ANTI-REVERSE LEVER	1111489	1111489
6	FORGE.SPOOL ASSY	1188172	1188173	39	ANTI-REVERSE SPRING	1111490	1111490
6	GRAPH SPARE SPL ASSY	1188174	1188175	40	ANTI-REVERSE BUTTON	1111491	1111491
7	WASHER	1111453	1111453	41	SCREW	1111492	1111492
8	SPOOL CLICK GEAR	1111454	1111454	42	HANDLE SCREW CAP	1188183	1188183
9	MAIN SHAFT	1111455	1111456	43	HDL SCREW CAP WASHR	1111494	1111494
10	SCREW NUT	1111457	1111457	44	BODY DECORATION PLATE	1188184	1188185
11	SCREW	1085900	1085900	45	BALL BEARING	1111486	1111486
12	ROTOR	1188176	1188177	46	DRIVE GEAR	1111498	1111499
13	SCREW	1111460	1111460	47	WASHER	1111500	1111500
14	BAIL ARM	1111461	1111461	48	BALL BEARING	1111486	1111486
15	SCREW	1111462	1111462	49	OSCILATION GEAR	1111502	1111503
16	BUSHING	1098664	1098664	50	BUSHING	1111504	1111504
17	WASHER	1188178	1188178	51	SCREW	1111505	1111505
18	LINE ROLLER	1125968	1125968	52	SLIDER	1111506	1113480
19	BUSHING	1111909	1111909	53	SLIDER GUIDER	1111507	1111508
20	BAIL ASSY	1188179	1188180	54	SCREW	1085341	1085341
21	SCREW	1111469	1111469	55	BODY CAP	1188186	1188187
22	BAIL LEVER	1111470	1111471	56	BODY CAP DECORATION PLATE	1188188	1188188
23	SPRING	1111472	1111472	57	SCREW	1111513	1111513
24	SUPPORTER	1111473	1111473	58	HANDLE ASSY	1188190	1188191
25	SPRING	1111474	1111474	59	BODY	1188191	1188193
26	BAIL LEVER	1111475	1111475	60	REAR COVER	1188194	1188195
27	SCREW	1111476	1111476	61	SCREW	1111520	1111520
28	ROTOR COVER	1188181	1188182	62	SCREW	1085342	1085342
29	SCREW	1111479	1111479	63	SLIDER RETAINER	1126453	1188196
30	WASHER	1111480	1111480	64	SCREW	1111479	1111479
31	SCREW	1111481	1111481	65	SCREW	N/A	1111479
32	ONE WAY BB RETAINER	1111482	1111482	66	BODY DECORATION PLATE	1188197	1188197
33	ONE WAY BALL BEARING	1111483	1111483				