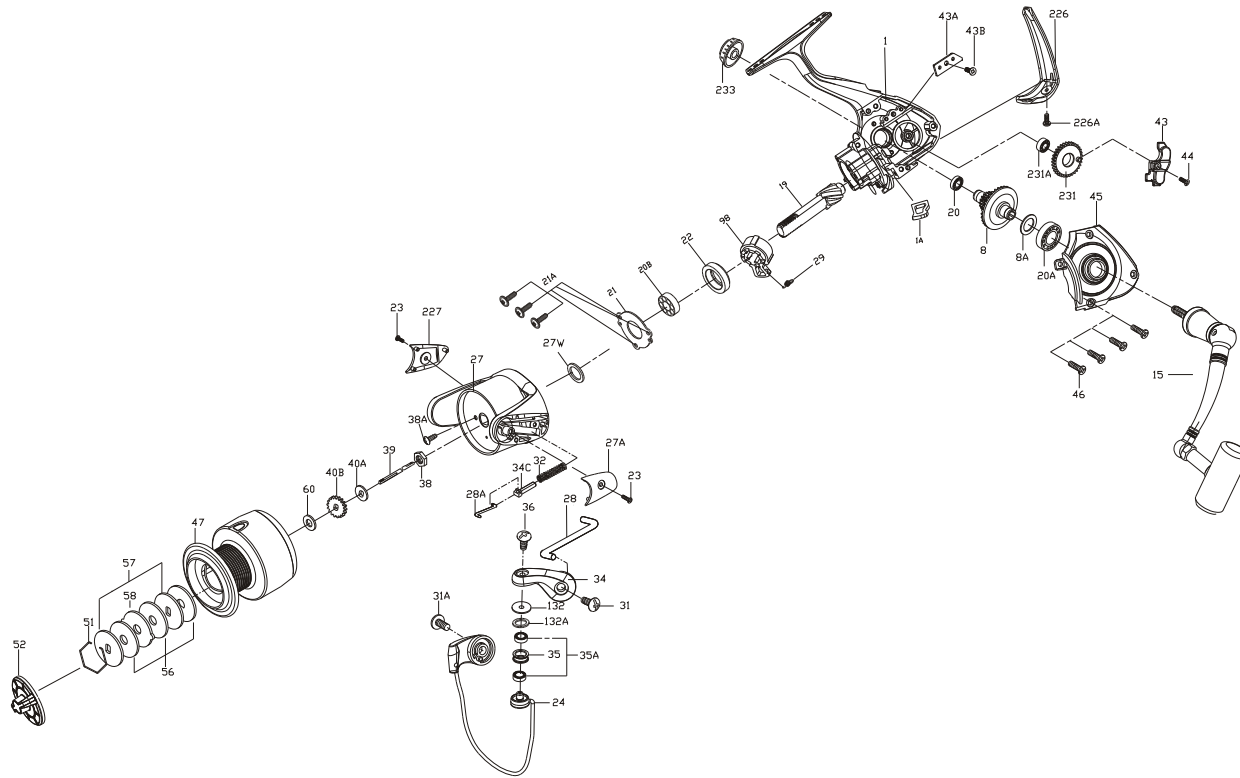




PARTS LIST FOR MODEL CV2 6000



KEY NO	DESCRIPTION	PART NO
1	Housing	001 6000CV2
1A	Housing Insert	001A5000CV2
8	Main Gear Assembly	008 5000CV2
8A	Main Gear Shim	008A4000CV2
15	Handle Assembly	015 6000CV2
19	Pinion	019 5000CV2
20	Housing Ball Bearing	020 5000CV2
20A	Housing Cover Ball Bearing	020A4000CV2
20B	Pinion Ball Bearing	020B5000CV2
21	Bearing Retainer	021 5000CV2
21A	Bearing Retainer Screws (3 req.)	021A2000CV2
22	Collar	022 5000CV2
23	Side Cover Screws (2 req.)	023 2000CV2
24	Bail Wire	024 6000CV2
27	Rotor	027 6000CV2
27A	Bail Pivot Cover	027A5000CV2
27W	Rotor Washer	027W5000CV2
28	Trip Lever	028 5000CV2
28A	Trip Lever Link	028A 5000CV2
29	Spring	029 2000CV2
31	Bail Arm Screw	031 2000CV2
31A	Bail Wire Screw	031A 2000CV2
32	Bail Spring	032 5000CV2
34	Bail Arm	034 5000CV2
34C	Pivot Arm	034C 5000CV2
35	Line Roller	035 4000CV2
35A	Line Roller Ball Bearing (2 req.)	035A2000CV2
36	Bail Stud Screw	036 4000CV2
38	Rotor Nut	038 5000CV2
38A	Rotor Nut Screw	038A2000CV2
39	Spool Shaft	039 6000CV2
40A	Spool Shaft Washer	040A 5000CV2
40B	Click Ratchet	040B5000CV2
43	Crosswind Block	043 5000CV2
43A	Crosswind Block Plate	043A5000CV2
43B	Crosswind Plate Screw	043B 2000CV2
44	Crosswind Block Screw	044 5000CV2
45	Housing Cover	045 5000CV2
46	Housing Cover Screws	046 5000CV2
47	Spool Assembly	047 6000CV2
51	Retaining Ring	051 5000CV2
52	Drag Knob	052 5000CV2
56	Friction Drag Washer (3 Req.)	056 5000CV2
57	Keyed Washer (2 Req.)	057 5000CV2
58	Drag Washer Eared	058 5000CV2
60	Thrust Washer	060 5000CV2
98	Clutch Bearing & Sleeve	098 5000CV2
132	Line Roller Bushing	132 4000CV2
132A	Line Roller Washer	132A2000CV2
226	Rear Cap	226 5000CV2
226A	Rear Cap Screw	226A 5000CV2
227	Bail Cam Cover	227 5000CV2
231	Crosswind Gear	231 5000CV2
231A	Crosswind Gear Ball Bearing	231A5000CV2
233	Bearing Cover	233 5000CV2