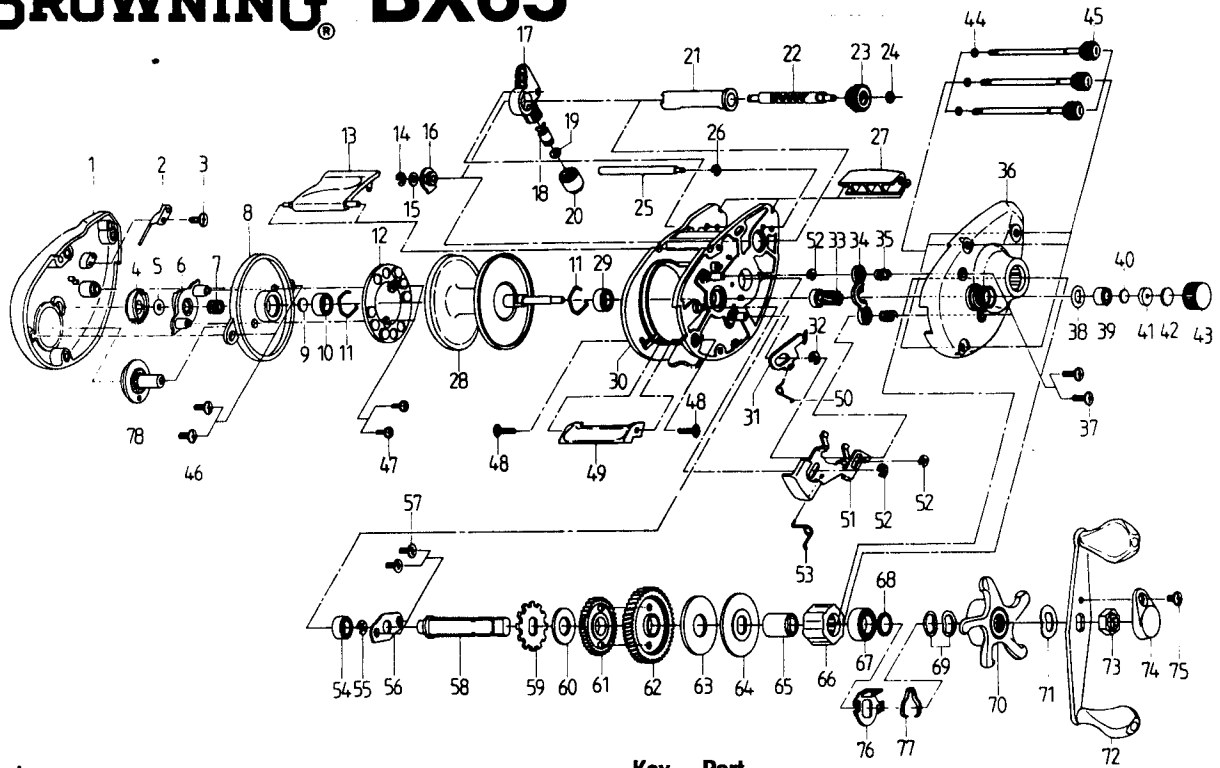


# BROWNING BX65



Key No.	Part No.	Description	Price	Key No.	Part No.	Description	Price
1	TW023-03	LEFT SIDE COVER	7.36	40	QW032-01	WASHER - SPOOL TENSION	0.26
2	QW108-01	CLICKER	0.26	41	QW081-01	COLLAR	0.15
3	QW125-01	SCREW - CLICKER	0.26	42	QW082-01	CUSHION WASHER - SPOOL	0.21
4	UW026-01	MAGNET CONTROL CAM	1.03	43	QW033-02	SPOOL TENSION KNOB	1.91
5	NX105-01	DIAL FRICTION RING	0.26	44	QW073-01	RING - THUMB SCREW RET.	0.31
6	QW028-01	SLIDE CAM	0.31	45	QW374-01	THUMB SCREW	3.40
7	NX071-01	SLIDE CAM SPRING	0.26	46	QW125-01	SCREW - SPOOL COVER	0.26
8	QW051-01	SPOOL COVER	1.13	47	QW076-01	SCREW - MAGNET RING	0.21
9	QW032-01	SPOOL TENSION SHIM	0.26	48	QW050-01	SCREW - THUMB REST	0.21
10	SW017-01	BEARING	6.59	49	QW009-03	THUMB REST	0.67
11	QW080-01	CLIP RING	0.26	50	QW097-01	SPRING - KICK LEVER	0.15
12	QW330-01	MAGNET PLATE ASSY.	3.35	51	QW339-01	RELEASE SLIDER ASSY.	1.91
13	TW027-04	HOOD	2.47	52	QW120-01	E-RING - RELEASE SLIDER	0.15
14	NX092-01	E-CLIP (WORM SHAFT)	0.15	53	QW104-01	SPRING - RELEASE SLIDER	0.46
15	QW035-03	WASHER (WORM SHAFT)	0.15	54	QW017-01	BEARING - CRANKSHAFT	0.41
16	QW067-01	WORM SHAFT BUSHING	0.21	55	QW120-01	E-RING - CRANKSHAFT	0.15
17	QW347-01	LINE GUIDE CARRIER	3.19	56	QW002-01	RETAINER - CRANKSHAFT	0.36
18	QW006-01	LINE GUIDE PAWL	3.19	57	TW107-01	SCREW - CRANKSHAFT RETAINER	0.36
19	QW035-03	WASHER (L/G PAWL)	0.15	58	QW008-01	CRANKSHAFT	2.73
20	QW007-02	LINE GUIDE CARRIER SCREW	0.88	59	QW083-01	TRIP RATCHET	0.62
21	QW016-01	WORM SHAFT GUIDE	0.72	60	QW111-01	WASHER	0.15
22	QW072-01	WORM SHAFT	5.10	61	QW112-01	GEAR - L/W IDLER	0.57
23	QW085-01	LEVEL WIND GEAR	0.57	62	QW012-01	DRIVE GEAR	14.37
24	NX090-01	E-RING (L/W GEAR)	0.15	63	QW059-01	DRAG DISC	1.34
25	QW061-02	STABILIZER BAR	1.60	64	QW045-01	DRAG WASHER	0.36
26	NX090-01	E-RING (STABILIZER BAR)	0.15	65	QW052-01	CLUTCH SLEEVE	2.21
27	QW099-12	FRONT SUPPORT	2.88	66	QW063-01	ANTI-REVERSE CLUTCH	14.57
28	QW321-01	SPOOL ASSY.	19.00	67	TW058-01	BEARING - CRANKSHAFT TOP	6.13
29	SW017-01	BEARING	6.59	68	TW035-01	WASHER - CRANKSHAFT	0.15
30	TW301-02	FRAME ASSY.	5.95	69	QW046-02	SPRING D WASHER	0.98
31	QW077-01	KICK LEVER	0.93	70	RW055-01	DRAG STAR	1.24
32	QW120-01	E-RING (KICK LEVER)	0.15	71	QW054-01	HANDLE WASHER	0.36
33	QW311-01	PINION GEAR	10.97	72	RW318-03	HANDLE ASSY.	8.81
34	QW025-01	PINION YOKE	0.21	73	QW003-01	HANDLE NUT	0.46
35	QW040-01	SPRING-PINION YOKE	0.21	74	QW034-02	HANDLE NUT CAP	0.67
36	QW024-04	RIGHT SIDE COVER	5.61	75	QW123-03	HANDLE NUT CAP SCREW	0.67
37	QW053-02	SCREW (RT. SIDE COVER)	0.21	76	TW110-01	CLICK SPRING RETAINER	0.46
38	QW101-01	TENSION KNOB RING	0.31	77	TW114-01	CLICK SPRING	0.46
39	SW117-01	BEARING	6.33	78	TW026-02	MAGNET CONTROL DIAL	1.03

Prices subject to change without notice. Prices do not include postage and handling.

**PLEASE ORDER BY PART NUMBER**

Rev. 6/94

Zebco Division Brunswick Corporation, Box 270, Tulsa, OK 74101 USA 918-836-5581

