



For parts and Service
Call toll free 1-888-404-1119
www.mikesreelrepair.com

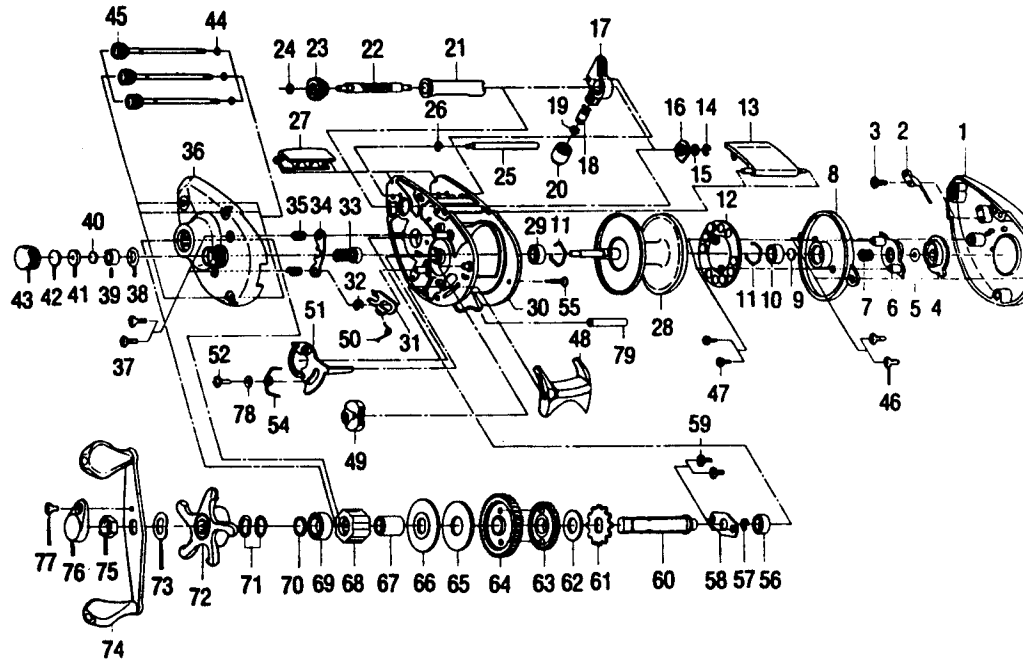
Aggressor A561

SPECIFICATIONS:

120 yds./14 lb. Line Capacity
9.4 oz. Weight
6.2:1 Gear Ratio
Left Hand; 4 BB; 1 RB

FEATURES:

Flippin' Switch
Thumb Bar
Constant Anti-Reverse
Magnetic Cast-Control
Adjustment
Color - Dark Grey



| Key No. | Part No. | Description | Price | Key No. | Part No. | Description | Price |
|---------|----------|--------------------------|-------|---------|----------|-----------------------------|-------|
| 1 | VW024-07 | Side Cover | 9.75 | 40 | QW032-01 | Washer - Spool Tension | .8 |
| 2 | QW108-01 | Clicker | .67 | 41 | QW081-01 | Collar | .9 |
| 3 | QW125-01 | Clicker Screw | .46 | 42 | QW082-01 | Cushion Washer - Spool | .6 |
| 4 | QW026-01 | Magnet Control Dial | 1.24 | 43 | QW033-03 | Spool Tension Knob | 2.5 |
| 5 | NX105-01 | Dial Friction Ring | .62 | 44 | QW073-01 | Ring - Thumb Screw Ret. | .7 |
| 6 | QW028-01 | Slide Cam | .72 | 45 | QW374-01 | Thumb Screw | 2.9 |
| 7 | NX071-01 | Slide Cam Spring | .52 | 46 | QW125-01 | Screw - Spool Cover | .4 |
| 8 | QW051-01 | Spool Cover | 1.75 | 47 | QW076-01 | Screw - Magnet Ring | .6 |
| 9 | QW032-01 | Spool Tension Shim | .52 | 48 | TW009-01 | Thumb Bar | .6 |
| 10 | SW017-01 | Bearing - Spool Shaft | 6.80 | 49 | XW087-01 | Flippin Switch | .6 |
| 11 | QW080-01 | Clip Ring | .52 | 50 | XW097-01 | Spring Kick Lever | .4 |
| 12 | QW330-01 | Magnet Plate Assy | 2.88 | 51 | XW039-01 | Release Slider | 1.8 |
| 13 | QW027-18 | Hood | 5.50 | 52 | QW076-01 | Screw - Release Slider | .6 |
| 14 | NX092-01 | E-Clip (Worm Shaft) | .30 | 54 | XW104-01 | Spring Release Slider | .4 |
| 15 | QW035-03 | Washer (Worm Shaft) | .26 | 55 | SW050-01 | Thumb Bar Retaining Screw | .6 |
| 16 | QW067-01 | Worm Shaft Bushing | .67 | 56 | SW017-01 | Bearing Crankshaft | 6.8 |
| 17 | QW347-01 | Line Guide Carrier | 2.78 | 57 | QW120-01 | E-Ring Crankshaft | .2 |
| 18 | QW006-01 | Line Guide Pawl | 2.78 | 58 | QW002-01 | Retainer - Crankshaft | .8 |
| 19 | QW035-03 | Washer (L/G Pawl) | .26 | 59 | QW107-01 | Screw - Crankshaft Retainer | .4 |
| 20 | QW007-01 | Line Guide Carrier Screw | .26 | 60 | QW008-02 | Crankshaft | 2.3 |
| 21 | QW016-01 | Worm Shaft Guide | 1.13 | 61 | QW083-01 | Trip Ratchet | .3 |
| 22 | QW072-01 | Worm Shaft | 4.43 | 62 | QW111-01 | Washer | .2 |
| 23 | QW085-01 | Level Wind Gear | .88 | 63 | QW112-01 | Gear - L/W Idler | .8 |
| 24 | NX090-01 | E-Ring (L/W Gear) | .41 | 64 | SW012-02 | Drive Gear | 10.6 |
| 25 | QW061-01 | Stabilizer Bar | 1.60 | 65 | QW059-01 | Drag Disc | 1.7 |
| 26 | NX090-01 | E-Ring (Stabilizer Bar) | .41 | 66 | QW045-01 | Drag Washer | .8 |
| 27 | QW099-17 | Front Support | 3.35 | 67 | QW052-01 | Clutch Sleeve | 2.8 |
| 28 | QW321-02 | Spool Assy | 14.85 | 68 | QW063-01 | Anti-Reverse Clutch | 10.8 |
| 29 | SW017-01 | Bearing | 6.80 | 69 | TW058-01 | Bearing - Crankshaft Top | 7.2 |
| 30 | XW001-03 | Frame | 5.89 | 70 | TW035-02 | Washer - Crankshaft | .4 |
| 31 | SW077-02 | Kick Lever | .90 | 71 | QW046-02 | Spring "D" Washer | .9 |
| 32 | QW120-01 | E-Ring (Kick Lever) | .26 | 72 | RW055-02 | Drag Star | 1.9 |
| 33 | QW311-02 | Pinion Gear | 9.79 | 73 | QW054-01 | Handle Washer | .7 |
| 34 | XW025-01 | Pinion Yoke | .65 | 74 | RW318-06 | Handle Assy | 8.6 |
| 35 | QW040-01 | Spring - Pinion Yoke | .67 | 75 | QW003-02 | Handle Nut | .3 |
| 36 | XW023-12 | Side Cover | 13.55 | 76 | QW034-02 | Handle Nut Cap | .6 |
| 37 | QW053-01 | Screw (Side Cover) | .67 | 77 | QW123-01 | Handle Nut Cap Screw | .1 |
| 38 | QW101-01 | Tension Knob Ring | .26 | 78 | SW121-01 | Washer - Release Slider | .5 |
| 39 | QW117-01 | Bushing - Tension Knob | .64 | 79 | XW094-01 | Spacer | 4.3 |

| | | | | | |
|-------------------------|------|---|-----------|---------------------|-----|
| MODEL INTRODUCED | 1996 | EFFECTIVE DATE OF PARTS LIST/DIAGRAM | Oct. 1996 | DISCONTINUED | N/A |
|-------------------------|------|---|-----------|---------------------|-----|

Prices subject to change without notice. Prices do not include postage and handling.

PLEASE ORDER BY PART NUMBER Zebco Division Brunswick Corporation, Box 270, Tulsa, OK 74101 USA 918-831-6965

