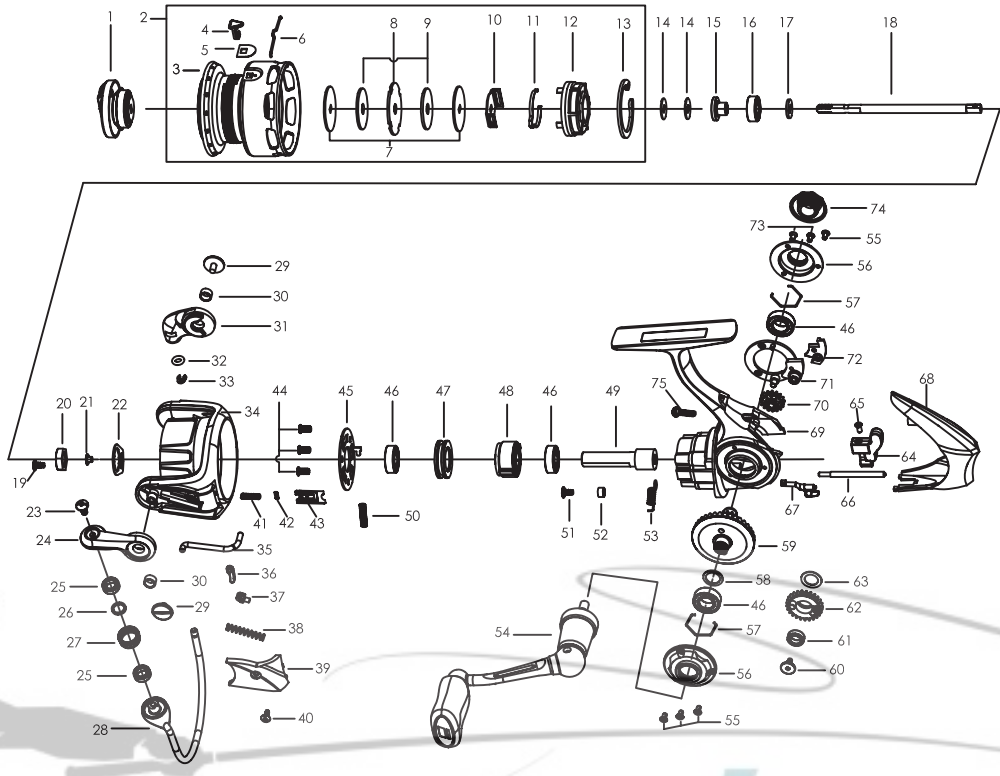




ORRA2 SX 20
30

10
30



PARTS LIST OF ORRA2 SX 20
30

10
30

REEL
REPAIR

ITEM#	PARTS DESCRIPTION	SX10	SX20	SX30	ITEM#	PARTS DESCRIPTION	SX10	SX20	SX30
1	Drag Knob Assembly	1346991	1346991	1347012	38	Trip Spring	1109437	1109437	1119106
2	Spool Assembly	1346992	1347006	1347013	39	Bail Arm Cover	1346999	1346999	1347027
3	Spool	1346993	1347007	1347014	40	Screw	1346959	1346959	1346959
4	Line Clip	1252739	1252739	1252739	41	Spring	1346957	1346957	1346982
5	Line Clip Shim	1259476	1259476	1259476	42	O-Ring	1206550	1206550	1206550
6	Line Clip Spring	1257318	1257318	1252740	43	Damper Holder	1346958	1346958	1346983
7	Keyed Washer(2req)	1085296	1085296	1252691	44	Screw(3req)	1346959	1346959	1346959
8	Spool Washer	1256940	1256940	1126366	45	Pinion Cover	1346960	1346960	1346984
9	Carbon Washer(2req)	1126305	1126305	1126368	46	Ball Bearing(4req) 7X13X4	1252717	1252717	1252717
10	Clicker Holder	1257317	1257317	1252692	47	Bearing Holder	1252718	1252718	1252718
11	Spool Clicker	1256941	1256941	1252693	48	Clutch Assembly	1252719	1252719	1252719
12	Spool Bottom	1256942	1256942	1252694	49	Pinion	1252720	1252720	1252720
13	Retaining Clip	1256943	1256943	1252695	50	Clutch Spring	1252716	1252716	1252716
14	Spool Shim Thick T=0.5	1178953	1178953	1178953	51	Screw	1141435	1141435	1141435
14	Spool Shim Thin T=0.3	1178954	1178954	1178954	52	POM Bushing	1279733	1279733	1279733
15	Main Shaft Sleeve	1252698	1252698	1252698	53	Clutch Switch Spring	1252722	1252722	1252722
16	Ball Bearing	1252699	1252699	1252699	54	Handle Assembly	1347000	1347000	1347000
17	Main Shaft Washer	1252700	1252700	1252700	55	Screw(4req)	1125961	1125961	1125961
18	Main Shaft	1346950	1346950	1252701	56	Body Trim(2req)	1347001	1347001	1347019
19	Rotor Set Screw	1126258	1126258	1126258	57	C-Clip(2req)	1252726	1252726	1252726
20	Rotor Nut	1259462	1259462	1259462	58	Shim	1085287	1085287	1085287
21	POM Bushing	1259463	1259463	1259463	59	Drive Gear	1346963	1346963	1346963
22	Rotor Set Plate	1346951	1346951	1346951	60	Screw	1126275	1126275	1126275
23	Line Roller Screw	1126261	1126261	1126261	61	Bushing	1108938	1108938	1108938
24	Bail Arm	1346994	1346994	1347015	62	Oscillation Gear	1346964	1346964	1252730
25	Ball Bearing(2req)	1112125	1112125	1112125	63	Washer	1253702	1253702	1346986
26	Washer	1110165	1110165	1110165	64	Oscillation Slider	1256964	1256964	1252734
27	Line Roller	1252705	1252705	1252705	65	Screw	1259454	1259454	1126275
28	Bail Assembly	1346995	1347008	1347016	66	Oscillation Guide	1346965	1346965	1252733
29	Bail Arm Screw(2req)	1126379	1126379	1126379	67	Clutch Switch	1252721	1252721	1252721
30	Bushing(2req)	1188261	1188261	1188261	68	Body Cover	1347002	1347011	1347020
31	Bail Holder	1346996	1346996	1347017	69	Gear Box	1347003	1347003	1347021
32	O-Ring	1252708	1252708	1252708	70	Reduction Gear	1346968	1346968	1252732
33	E-Clip	1252707	1252707	1252707	71	Gear Holder	1346969	1346969	1346989
34	Rotor	1346997	1347009	1347018	72	Oscillation Cover	1347004	1347004	1347022
35	Trip Bar	1346954	1346975	1347010	73	Screw(2req)	1126084	1126084	1126084
36	Trip Linkage	1252713	1252713	1252713	74	Dust Cap	1347005	1347005	1347005
37	Trip Bushing	1126272	1126272	1126272	75	Screw	1085599	1085599	1085599