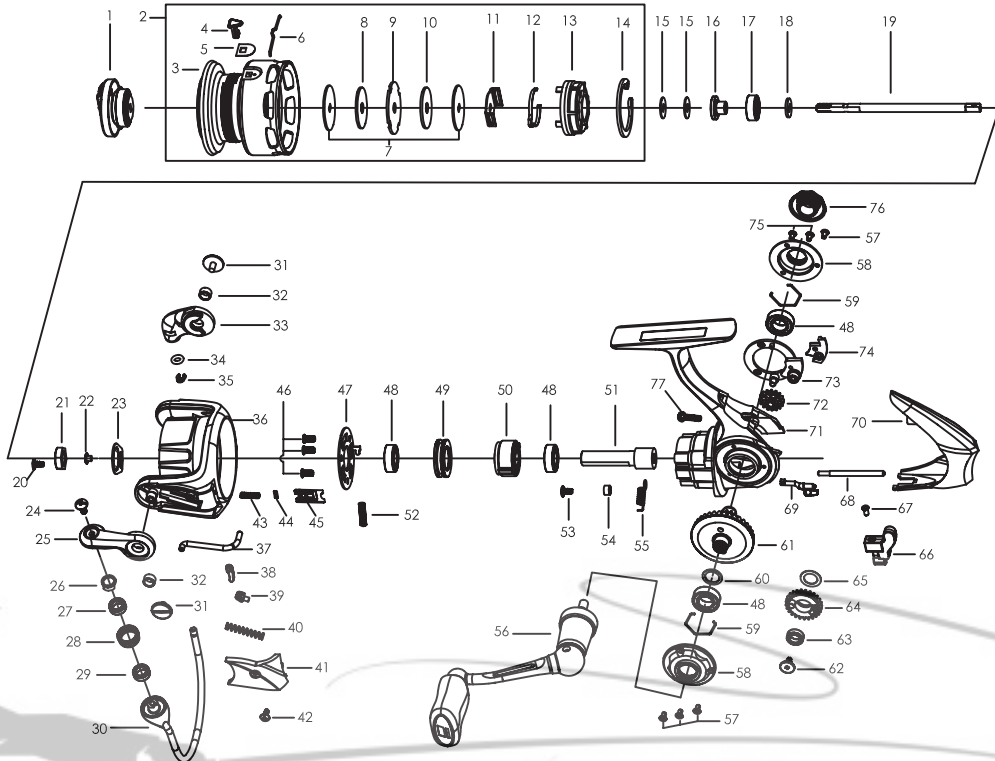




ORRA2 S 20  
30



PARTS LIST OF ORRA2 S 20  
30

ITEM#	PARTS DESCRIPTION	S10	S20	S30	ITEM#	PARTS DESCRIPTION	S10	S20	S30
1	Drag Knob Assembly	1256935	1256935	1252686	39	Trip Bushing	1126272	1126272	1126272
2	Spool Assembly	1344988	1346971	1346977	40	Trip Spring	1109437	1109437	1119106
3	Spool	1346949	1346972	1346978	41	Bail Arm Cover	1346955	1346955	1346981
4	Line Clip	1252739	1252739	1252739	42	Screw	1346956	1346956	1346959
5	Line Clip Shim	1259476	1259476	1259476	43	Spring	1346957	1346957	1346982
6	Line Clip Spring	1257318	1257318	1252740	44	O-Ring	1206550	1206550	1206550
7	Keyed Washer(2req)	1085296	1085296	1252691	45	Damper Holder	1346958	1346958	1346983
8	Felt Washer	1085298	1085298	1252752	46	Screw(3req)	1346959	1346959	1346959
9	Spool Washer	1256940	1256940	1126366	47	Pinion Cover	1346960	1346960	1346984
10	Carbon Washer	1126305	1126305	1126368	48	Ball Bearing (4req)7X13X4	1252717	1252717	1252717
11	Clicker Holder	1257317	1257317	1252692	49	Bearing Holder	1252718	1252718	1252718
12	Spool Clicker	1256941	1256941	1252693	50	Clutch Assembly	1252719	1252719	1252719
13	Spool Bottom	1256942	1256942	1252694	51	Pinion	1252720	1252720	1252720
14	Retaining Clip	1256943	1256943	1252696	52	Clutch Spring	1252716	1252716	1252716
15	Spool Shim Thick T=0.5	1178953	1178953	1178953	53	Screw	1141435	1141435	1141435
16	Spool Shim Thin T=0.3	1178954	1178954	1178954	54	POM Bushing	1279733	1279733	1279733
17	Main Shaft Sleeve	1252698	1252698	1252698	55	Clutch Switch Spring	1252722	1252722	1252722
18	Plastic Bushing	1252753	1252753	1252753	56	Handle Assembly	1346961	1346961	1346961
19	Main Shaft Washer	1252700	1252700	1252700	57	Screw(4req)	1125961	1125961	1125961
20	Main Shaft	1346950	1346950	1252701	58	Body Trim(2req)	1346962	1346962	1346985
21	Rotor Set Screw	1126258	1126258	1126258	59	C-Clip(2req)	1252726	1252726	1252726
22	Rotor Nut	1259462	1259462	1259462	60	Shim	1085287	1085287	1085287
23	POM Bushing	1259463	1259463	1259463	61	Drive Gear	1346963	1346963	1346963
24	Rotor Set Plate	1346951	1346951	1346951	62	Screw	1126275	1126275	1126275
25	Line Roller Screw	1126261	1126261	1126261	63	Bushing	1108938	1108938	1108938
26	Bail Arm	1252704	1252704	1252704	64	Oscillation Gear	1346964	1346964	1252730
27	Bushing	1252755	1252755	1252755	65	Washer	1253702	1253702	1346986
28	POM Bushing	1252756	1252756	1252756	66	Oscillation Slider	1256964	1256964	1252734
29	Line Roller	1252705	1252705	1252705	67	Screw	1259454	1259454	1126275
30	Ball Bearing	1112125	1112125	1112125	68	Oscillation Guide	1346965	1346965	1252733
31	Bail Assembly	1346952	1346973	1346979	69	Clutch Switch	1252721	1252721	1252721
32	Bail Arm Screw(2req)	1126379	1126379	1126379	70	Body Cover	1346966	1346976	1346987
33	Bushing(2req)	1188261	1188261	1188261	71	Gear Box	1346967	1346967	1346988
34	Bail Holder	1252709	1252709	1252709	72	Reduction Gear	1346968	1346968	1252732
35	O-Ring	1252708	1252708	1252708	73	Gear Holder	1346969	1346969	1346989
36	E-Clip	1252707	1252707	1252707	74	Oscillation Cover	1346970	1346970	1346990
37	Rotor	1346953	1346974	1346980	75	Screw(2req)	1126084	1126084	1126084
38	Trip Bar	1346954	1346975	1347010	76	Dust Cap	1252738	1252738	1252738
39	Trip Linkage	1252713	1252713	1252713	77	Screw	1085599	1085599	1085599

