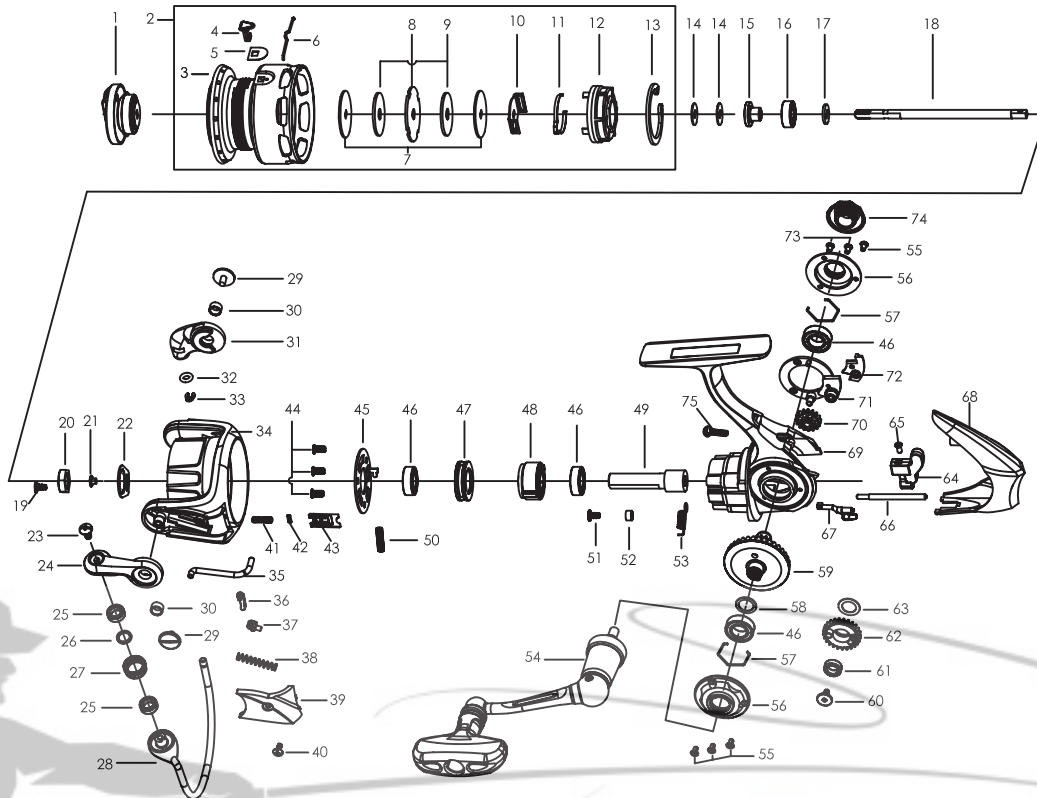




ORRA2 PF 35



PARTS LIST OF ORRA2 PF 35

ITEM#	PARTS DESCRIPTION	PF35	ITEM#	PARTS DESCRIPTION	PF35
1	Drag Knob Assembly	1347029	38	Trip Spring	1119106
2	Spool Assembly	1347030	39	Bail Arm Cover	1347027
3	Spool	1347031	40	Screw	1346959
4	Line Clip	1252739	41	Spring	1346982
5	Line Clip Shim	1259476	42	O-Ring	1206550
6	Line Clip Spring	1252740	43	Damper Holder	1346983
7	Keyed Washer(2req)	1252691	44	Screw(3req)	1346959
8	Spool Washer	1126366	45	Pinion Cover	1346984
9	Carbon Washer(2req)	1126368	46	Ball Bearing(4req) 7X13X4	1252717
10	Clicker Holder	1252692	47	Bearing Holder	1252718
11	Spool Clicker	1252693	48	Clutch Assembly	1252719
12	Spool Bottom	1252694	49	Pinion	1252720
13	Retaining Clip	1252696	50	Clutch Spring	1252716
14	Spool Shim Thick T=0.5	1178953	51	Screw	1141435
14	Spool Shim Thick T=0.3	1178954	52	POM Bushing	1279733
15	Main Shaft Sleeve	1252698	53	Clutch Switch Spring	1252722
16	Ball Bearing	1252699	54	Handle Assembly	1347035
17	Main Shaft Washer	1252700	55	Screw(4req)	1125961
18	Main Shaft	1252701	56	Body Trim(2req)	1347019
19	Rotor Set Screw	1126258	57	C-Clip(2req)	1252726
20	Rotor Nut	1259462	58	Shim	1085287
21	POM Bushing	1259463	59	Drive Gear	1346963
22	Rotor Set Plate	1346951	60	Screw	1126275
23	Line Roller Screw	1126261	61	Bushing	1108938
24	Bail Arm	1347032	62	Oscillation Gear	1252730
25	Ball Bearing(2req)	1112125	63	Washer	1346986
26	Washer	1110165	64	Oscillation Slider	1252734
27	Line Roller	1252705	65	Screw	1126275
28	Bail Assembly	1347025	66	Oscillation Guide	1252733
29	Bail Arm Screw(2req)	1126379	67	Clutch Switch	1252721
30	Bushing(2req)	1188261	68	Body Cover	1347036
31	Bail Holder	1347033	69	Gear Box	1347037
32	O-Ring	1252708	70	Reduction Gear	1252732
33	E-Clip	1252707	71	Gear Holder	1346989
34	Rotor	1347034	72	Oscillation Cover	1347038
35	Trip Bar	1346998	73	Screw(2req)	1126084
36	Trip Linkage	1252713	74	Dust Cap	1347005
37	Trip Bushing	1126272	75	Screw	1085599

MIKE'S REEL REPAIR