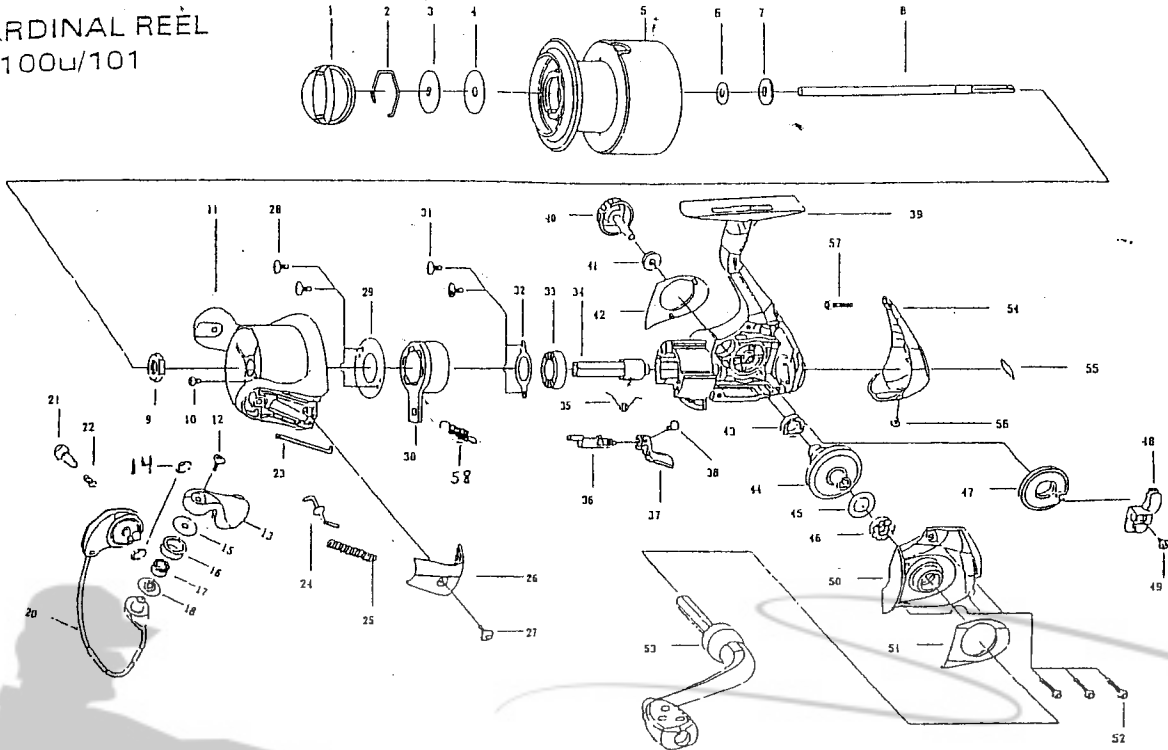


EXPLODED VIEW

ORDINAL REEL
100U/101



C100U/C101FD 2002

| NO | DESCRIPTION | 100U | 101 | NO | DESCRIPTION | 100U | 101 |
|----|-----------------------|---------|---------|----|---------------------------|---------|---------|
| 1 | drag knob | 1085265 | 1085265 | 30 | one way ball bearing | 1085543 | 1085543 |
| 2 | retainer ring | 1092606 | 1092606 | 31 | screw | 1092775 | 1092777 |
| 3 | washer | 1092607 | 1092607 | 32 | retainer ring | 1085332 | 1085332 |
| 4 | washer | 1092709 | 1092709 | 33 | ball bearing | 1085544 | 1085544 |
| 5 | Spool Assembly | 1085604 | 1085616 | 34 | pinion gear | 1085545 | 1085545 |
| 5 | Spool Assy Poly. | 1091652 | 1091653 | 35 | spring | 1085546 | 1085546 |
| 6 | washer | 1085270 | 1085270 | 36 | anti-reverse pin | 1085547 | 1085547 |
| 7 | click gear | 1085271 | 1085271 | 37 | anti-reverse lever | 1092716 | 1092716 |
| 8 | main shaft | 1085605 | 1092817 | 38 | screw | 1092777 | 1092775 |
| 9 | rotor nut | 1085606 | 1085618 | 39 | body | 1085548 | 1085548 |
| 10 | screw | 1085900 | 1085900 | 40 | handle screw cap | 1092778 | 1092778 |
| 11 | rotor | 1085607 | 1085619 | 41 | washer | 1092781 | 1092781 |
| 12 | screw | 1085608 | 1085608 | 42 | body decoration plate | 1092811 | 1092811 |
| 13 | bail arm | 1085609 | 1085620 | 43 | bushing | 1092724 | 1092724 |
| 14 | ring | 1085323 | 1085323 | 44 | drive gear | 1085550 | 1085550 |
| 15 | bushing | 1092791 | 1092791 | 45 | bushing | 1085551 | 1085551 |
| 16 | line roller | 1085364 | 1085364 | 46 | ball bearing | 1085552 | 1085552 |
| 17 | ball bearing | 1085365 | 1085365 | 47 | oscilation gear | 1085612 | 1092815 |
| 18 | bushing | 1085536 | 1085536 | 48 | slider | 1085613 | 1092816 |
| 20 | BAIL ASSY | 1085024 | 1085621 | 49 | screw | 1085456 | 1085456 |
| 21 | click pin | 1085538 | 1085538 | 50 | body cap | 1092804 | 1092819 |
| 22 | spring | 1085539 | 1085539 | 51 | body cap decoration plate | 1092809 | 1092809 |
| 23 | bail lever | 1085610 | 1092818 | 52 | screw | 1085599 | 1085599 |
| 24 | bail lever | 1085540 | 1085540 | 53 | handle assembly | 1085600 | 1085600 |
| 25 | spring | 1085541 | 1085541 | 54 | rear cover | 1092813 | 1092813 |
| 26 | rotor cover | 1085611 | 1085623 | 55 | logo plate | 1085602 | 1085602 |
| 27 | screw | 1092775 | 1092775 | 56 | screw | 1092710 | 1092710 |
| 28 | screw | 1092844 | 1092844 | 57 | screw | 1085603 | 1085603 |
| 29 | one way retainer ring | 1085542 | 1085542 | 58 | spring | 1080731 | 1080731 |

39