

55 AT/MAXXXUM - OKADA

55lbs Thrust

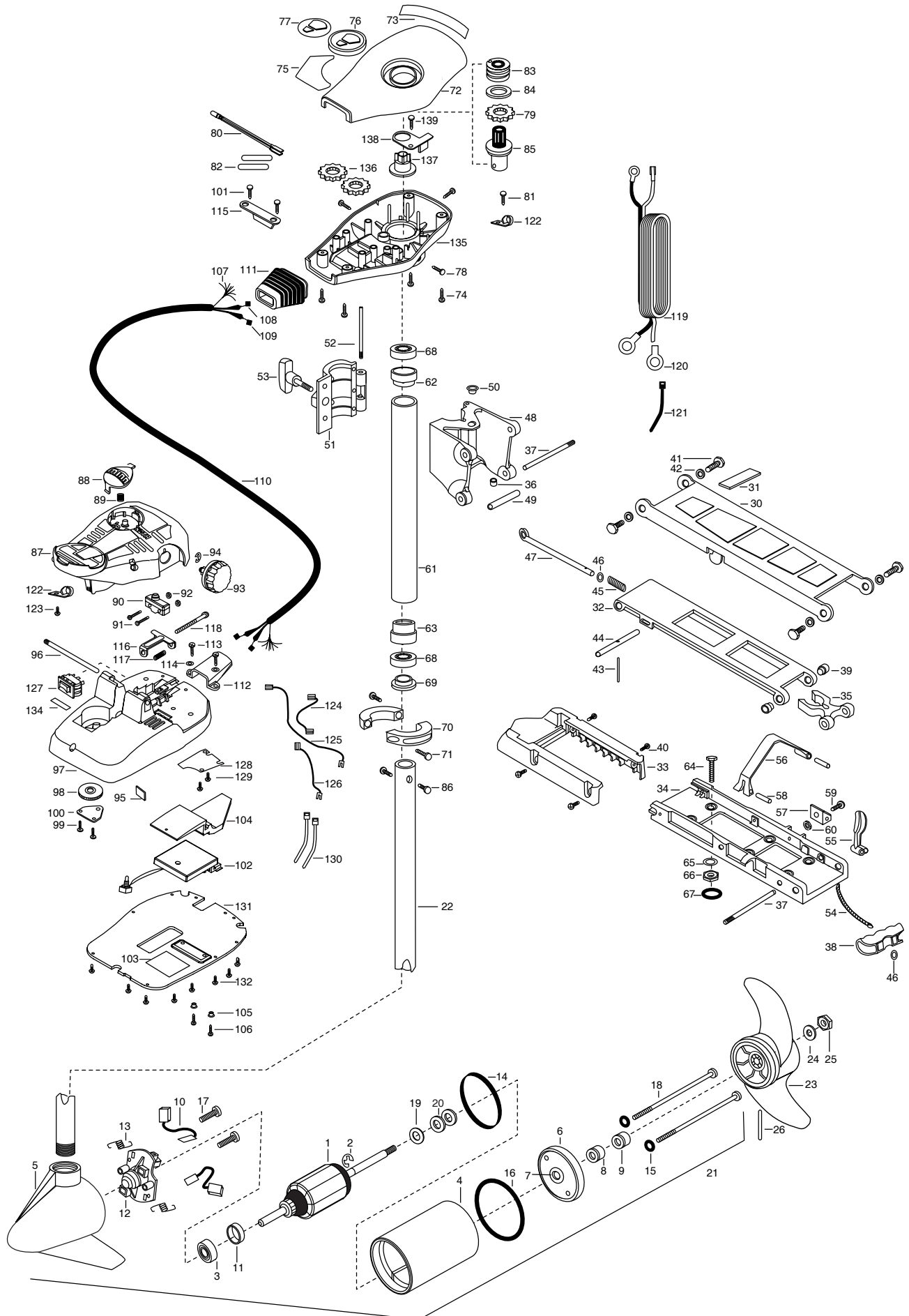
12 Volt

36" or 42" Shaft

For parts and service

call toll free: 1-888-404-1119

www.mikesreelrepair.com



For parts and service

call toll free: 1-888-404-1119

www.mikesreelrepair.com

1	92-100-013	ARMATURE ASSEMBLY 12V 3.625	■	2771812	HINGE BASE W/EYLET-INSERT ASSEMBLY	92	2233100	NUT-SWITCH MOUNT [2.EA]
2	788-015	RETAINING RING	48	2261811	HINGE BASE	93	2260160	KNOB-SPEED CONTROL (VAR)
3	140-010	BEARING- BALL	49	2231570	SLEEVE ROLLER (HINGE BRACKET)	94	2263000	E-RING TRU-ARC#5133-43
4	431-101	HOUSING- CENTER ASSEMBLY 3.62 FW TXT	50	2232350	EYELET- ROPE	95	2266413	TENSION SCREW PLATE FTPDL
5	421-065	HOUSING- BRUSH END 3.62 TXT	51	2261821	HINGE DOOR-PAINTED F/W	96	2260511	PIN-PIVOT A/T FT PDL
6	2-400-101	PLAIN END HOUSING ASSEMBLY 3.62	52	2262640	PIN-HINGE DOOR	97	2774550	FOOT PEDAL BASE/PIN ASSEMBLY
7	144-049	BEARING -FLANGE	53	2260183	KNOB-HINGE COVER A/T FW	98	2262301	PULLEY (FOOT PEDAL)
8	880-003	**SEAL	54	2251600	ROPE- (31")	99	2223430	SCREW- #8X3/4 PPH TYPE 25 SS [2.EA]
9	880-006	**SEAL W/SHEILD	55	2267200	LATCH LEVER	100	2266400	COVER-PULLEY (STAMPING)
10	188-036	BRUSH ASSEMBLY 3.625 [2.EA]	56	2263800	STRAP-HOLD DOWN	101	2301310	SCREW-8-18 X 1/2 SS [2.EA]
11	725-050	PAPER TUBE- BRUSH RETENTION	57	2261910	BRACKET- HOLD DOWN STRAP	102	2264006	CONTROL BOARD ASSEMBLY-12V
12	738-036	BRUSH PLATE W/HOLDER	58	2260500	PIN-ROLL LATCH LEVER [2.EA]	103	2365107	INSULATING PAD 2.3 X 3.2
13	975-040	SPRING- TORSION [2.EA]	59	2263440	SCREW-10-24 X 3/4 SS	104	2264018	HEAT SINK, MACH, MAX FT PD
14	**337-036	GASKET	60	2333101	NUT-HEX 10-24 UNC-28 NYLOCK	105	2261712	SHOULDER WASHER MAXXUM FT [2.EA]
15	**701-008	O-RING [2.EA]	■	2772015	TUBE W/BEARING RACE ASSEMBLY	106	2263447	SCREW, 8-32 X 1" [2.EA]
16	**701-081	O-RING	*61	2272066	TUBE OUTER 18" - 4 HOLES	107	2261219	WIRE HARNESS AT & MAX
17	830-007	SCREW- #8-32 [2.EA]	62	2266260	BEARING RACE-	108	2267500	CABLE ASSEMBLY-RIGHT (5')
18	830-042	THRU BOLT10-32X8.83 [2.EA]	63	2266220	BEARING RACE-STEEL	109	2267510	CABLE ASSEMBLY-LEFT (5')
19	990-067	WASHER- STEEL THRUST	■	2994803	BAG ASSEMBLY-(BOLTS,NUTS,WASHERS)	110	2265430	CABLE JACKET (5')
20	990-070	WASHER- NYLATRON [2.EA]	*64	2153501	BOLT-MOUNTING-3500 W/STG [4.EA]	111	2265110	BOOT-CONTROL BOX
21	2099094	MOTOR ASSEMBLY 12V 3.62 VARS	*65	2151726	WASHER-5/16 STD SS [4.EA]	112	2265115	BOOT-FOOT PEDAL BASE
22	2032062	TUBE (COMP)W/CSK HOLE-36"	*66	2153100	NUT-5/16-L8NC MOUNTING [4.EA]	113	2372100	SCREW-8-18 X 5/8 THD (SS) [2.EA]
	2032063	TUBE (COMP)W/CSK HOLE-42"	*67	2301720	WASHER-MOUNTING RUBBER [6.EA]	114	2261714	WASHER-MAXXUM FT PDL [2.EA]
■	1378122	PROP KIT	68	2266000	BEARING BALL-STEEL [2.EA]	115	2261900	BRACKET-CONDUIT
23	2091150	PROPELLER W.WEDGE	69	2266115	BEARING CONE	116	2263210	BRACKET-CONDUIT ADJUSTMENT
24	2151726	WASHER - 5/16 STD SS	70	2261619	COLLAR HALF-ZINC-2 PER [2.EA]	117	2262720	SPRING-CONDUIT ADJUST
25	2053101	NUT- PROP NYLOC 5/16	71	2263452	SCREW-1/4-20X3/4 [2.EA]	118	2263463	SCREW-1/4-20 X 2" STL PPH
26	2092600	PIN- DRIVE SS	72	2260280	CONTROL BOX COVER-BLK	119	2261232	LEADWIRE (A/T VARIABLE) 80"
■	2991954	STD-BOWMT FW 30,33,36AT	73	2265507	DECAL- CNTRL BOX TOP/SIDE	120	2020700	TERMINAL RING, 3/8" [2.EA]
30	2264221	ARM-UPPER FW/STD	74	2372100	SCREW-8-18 X 5/8 THD SS [4.EA]	121	2256300	TIE WRAP-5.5" BLACK
31	2265120	BUMPER (UPPER ARM)	75	2265625	DECAL COVER, 55AT/MAXXUM	122	2263201	CLAMP WIRE HARNESS MICRO [2.EA]
32	2774310	ARM-LOWER ASSEMBLY	76	2260150	POINTER DISC TRNSLCNT RED	123	2332103	SCREW-6-20 X 3/8 THD SS
33	2263900	MOTOR REST- (565 TURBO)	77	2265800	DECAL-INDICATOR	124	2260316	CONNECTING WIRE (VAR.SPD)
34	2251942	BOW PLATE-D/C	78	2053414	SCREW-#8-32 X 1/2 TRI-LOBE [3.EA]	125	2260312	WIRE,BLK W/WHT STRIPE 19 1/4
35	2293801	TUBE LOCK- "B"	79	2267800	GEAR-INDICATOR	126	2260323	WIRE,BLK W/GRN STRIPE VARIABLE
36	2264705	INSERT-HINGE BASE (STD MT)	80	2264015	LIGHT/INDICATOR	127	2254031	SWITCH-MOM/OFF/CON
37	2260506	HINGE-PIN (HEADLESS) ZINC [2.EA]	81	2301310	SCREW-8-18 X 1/2 SS	128	2266412	SWITCH PLATE, FT PEDAL
38	2150400	PULL-GRIP	82	2355410	SHRINK TUBE-3/8 OD X 2" [2.EA]	129	2332103	SCREW-6-20 X 3/8 THD SS [2.EA]
39	2236000	BEARING NYLINER [2.EA]	83	2232360	PULLEY-CABLE DRUM	130	2256301	TIE WRAP-5.5" WHITE [2.EA]
40	2303431	SCREW 1/4-20X5/8" PPH [4.EA]	84	2261730	WASHER-NYLON A/T CON B	131	2266414	BOTTOM PLATE, MAXXUM FT
41	2293511	BOLT-UPPER ARM (W/LOCTITE) [4.EA]	85	2996246	TOP BEARING RACE/PINION ASSEMBLY	132	9953104	SCREW-8 X 1/2" SS [8.EA]
42	2293500	BUSHING-SHOULDER (UPPER ARM) [4.EA]	86	2263410	SCREW-8-32 X 5/16 (ZN PL) [2.EA]	134	2266610	DECAL-ON/OFF SWITCH
43	2152610	SPRING-PIN (LOCKBAR)	87	2790002	FOOT PEDAL/PLUG ASSEMBLY (AT)	135	2262535	CONTROL BOX-PLASTIC A/T's
44	2233600	LOCK BAR- (BOW MOUNT)	88	2263700	PUSH-BUTTON FOOT PEDAL	136	2267800	GEAR INDICATOR [2.EA]
45	2152700	SPRING-(LOCKBAR) CAD.PLT	89	2302732	SPRING-LOWER PEDAL SS	137	2262220	INDICATOR-DRIVE
46	2151700	WASHER-EYE SHAFT(.562 OD) [2.EA]	90	2264023	SWITCH-SEALED ASSEMBLY	138	2261905	BRACKET/INDICATOR
47	2153600	EYE SHAFT-CAD.PLATE	91	2262114	SCREW-MOUNTING/SWITCH [2.EA]	139	2301310	SCREW-8-18 X 1/2 SS

For parts and service

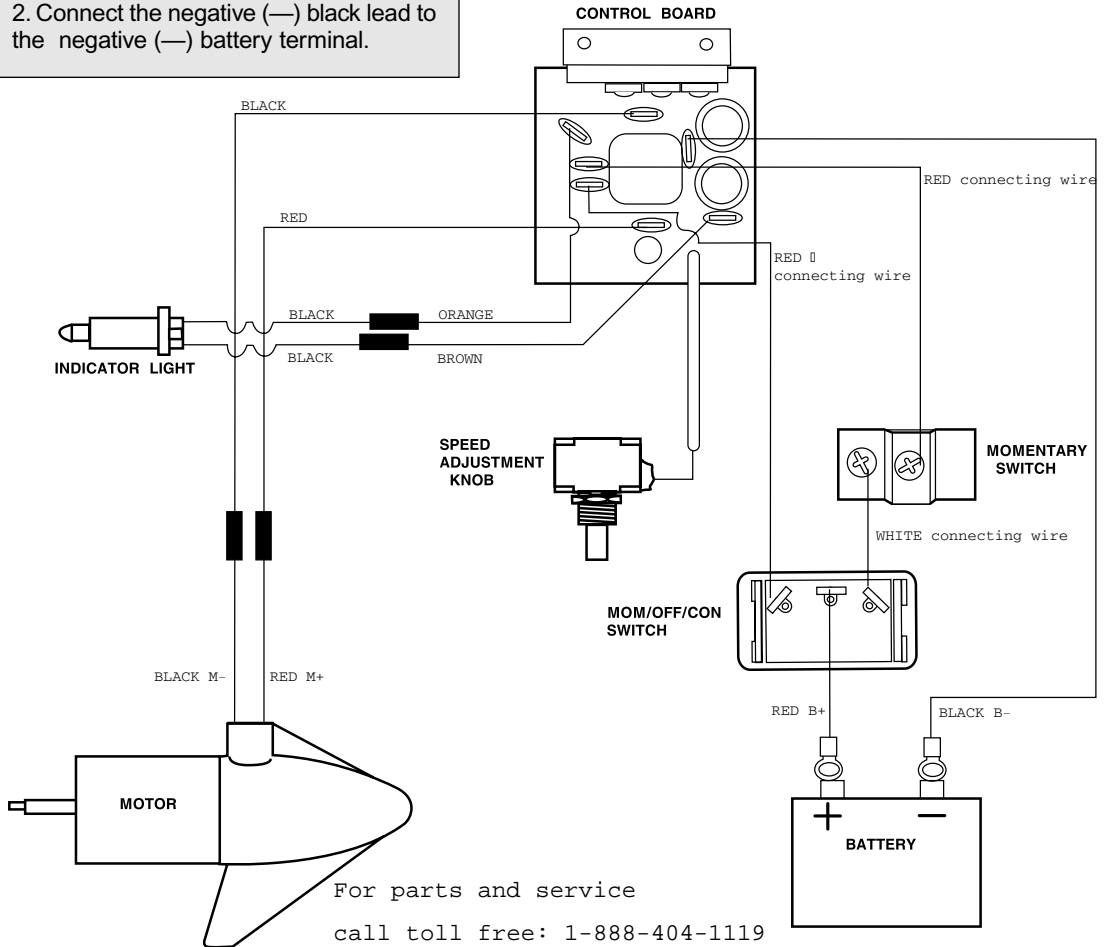
call toll free: 1-888-404-1119

www.mikesreelrepair.com

****Seal & Oring Kit P/N 2888460** * This item is part of an assembly. This item cannot be sold separately due to machining and /or assembly that is required.

P/N 2264949 REV.A 11-00

1. Connect the positive (+) red lead to the positive (+) battery terminal.
2. Connect the negative (—) black lead to the negative (—) battery terminal.



For parts and service
 call toll free: 1-888-404-1119
www.mikesreelrepair.com