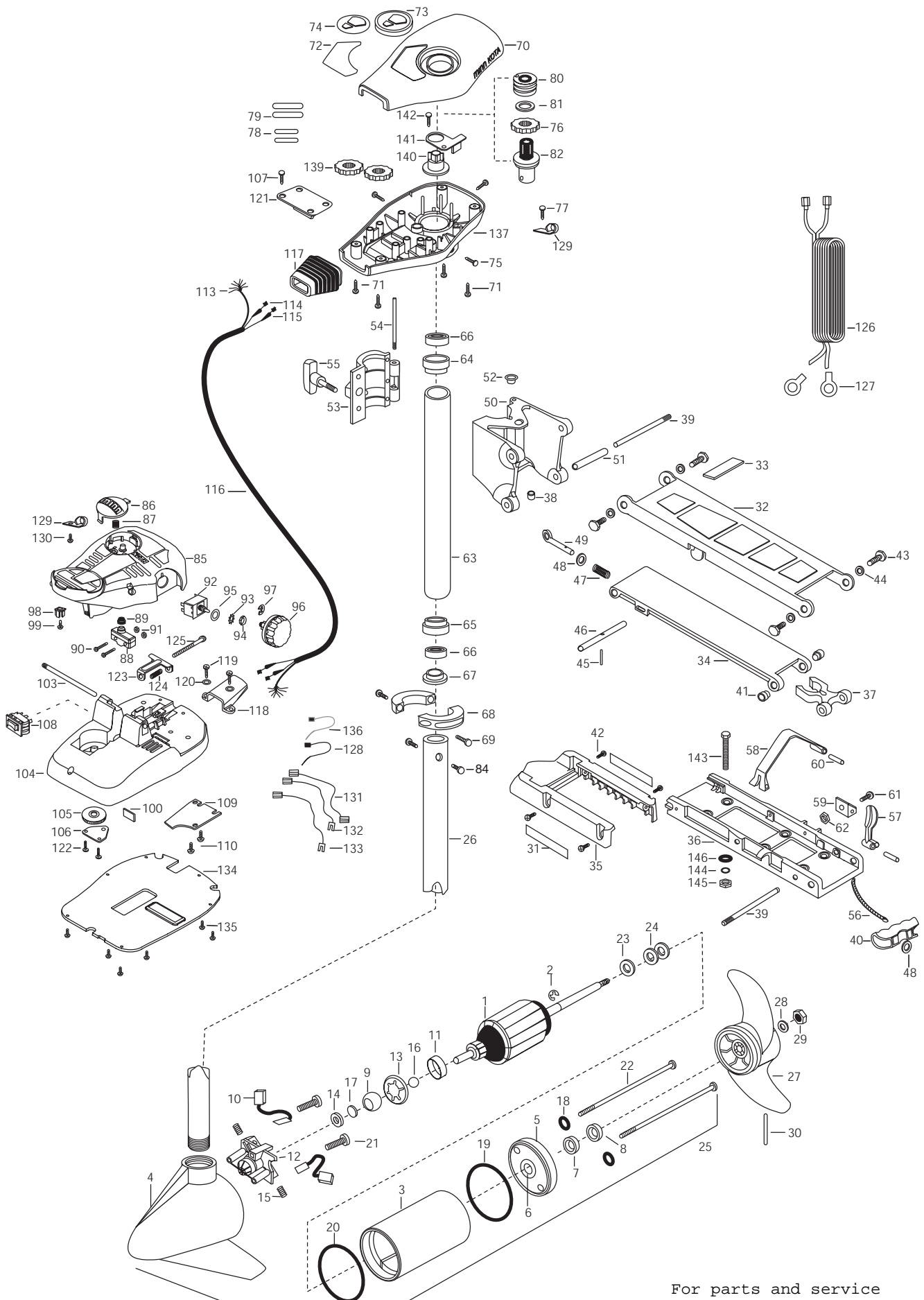


40AT OUTDOOR  
40 LBS THRUST  
12 VOLT 42 AMP  
42" SHAFT

For parts and service  
call toll free: 1-888-404-1119  
www.mikesreelrepair.com



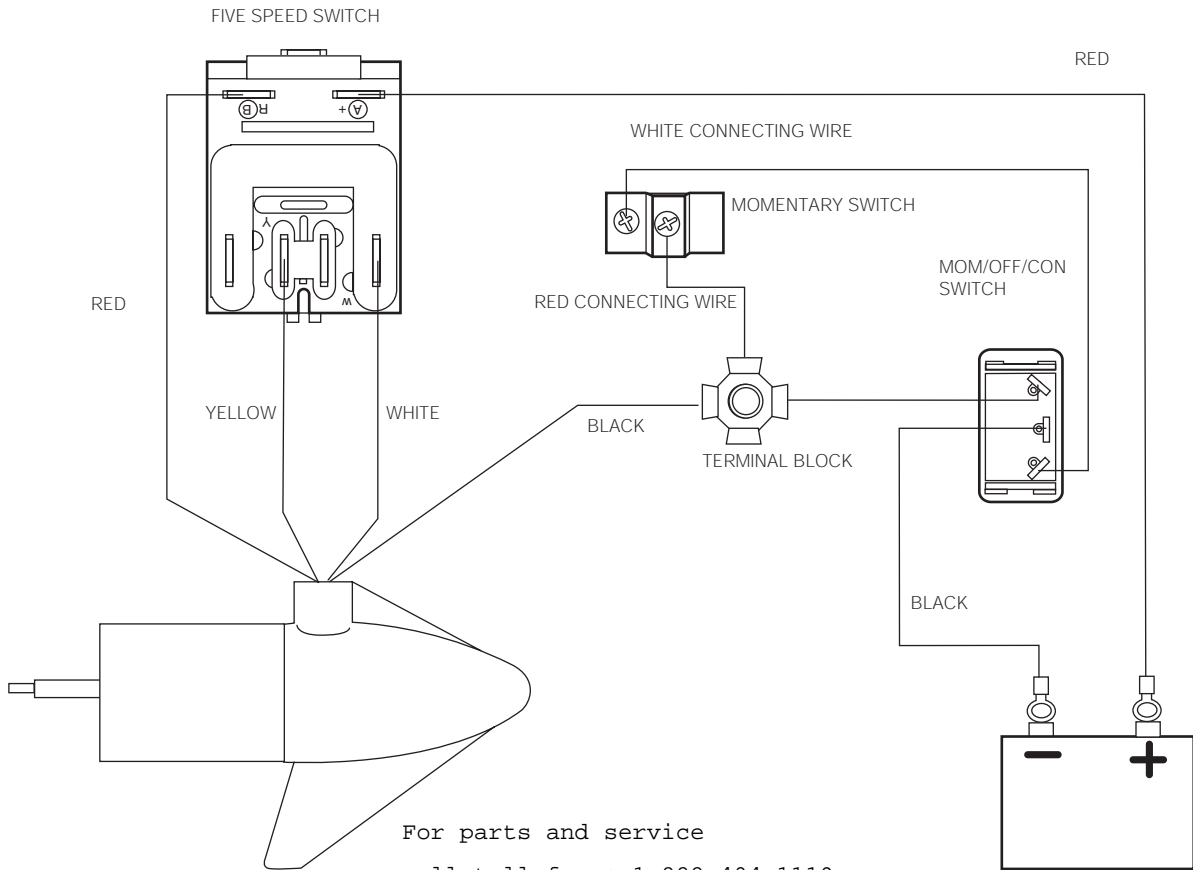
For parts and service  
call toll free: 1-888-404-1119  
www.mikesreelrepair.com

|     |           |  |    |         |                                   |      |         |                                     |
|-----|-----------|--|----|---------|-----------------------------------|------|---------|-------------------------------------|
| 1   | 2-100-001 | ARM ASSEMBLY 12V 3.25                                    | 46 | 2233600 | LOCK BAR- BOW MOUNT               | 95   | 2261715 | SPACER-SWITCH 5 SP MODELS           |
| 2   | 788-015   | RETAINING RING   | 47 | 2152700 | SPRING-LOCKBAR CAD.PLT            | 96   | 2260170 | KNOB-SPEED CONTROL 5SPD             |
| 3   | 431-079   | HOUSING ASSEMBLY CENTER 3.25 TXT                         | 48 | 2151700 | WASHER-EYE SHAFT .562 OD [2.EA]   | 97   | 2263000 | E-RING TRU-ARC                      |
| 4   | 2-300-132 | HOUSING- ASSEMBLY BRUSH END 3.25 SP.CO                   | 49 | 2153600 | EYE SHAFT-CAD.PLATE               | 98   | 2260730 | CONNECTOR 1/4 MALE TAB              |
| 5   | 2-400-127 | PLAIN END HOUSING ASSEMBLY                               | 50 | 2261800 | HINGE BASE-F/W STD OLIVE          | 99   | 2332103 | SCREW-6-20 X 3/8                    |
| 6   | 144-049   | BEARING- FLANGE [SERVICE ONLY]                           | 51 | 2231570 | SLEEVE ROLLER -HINGE BRACKET      | 100  | 2266413 | TENSION SCREW PLATE FT PEDL         |
| 7   | 880-003   | **SEAL   | 52 | 2232350 | EYELET-ROPE                       | 103  | 2260511 | PIN-PIVOT A/T FT PDL                |
| 8   | 880-006   | **SEAL WITH SHIELD                                       | 53 | 2261805 | HINGE DOOR- AT SW STD OLIVE       | 104  | 2992102 | FT PEDAL BASE/PIN ASSEMBLY SONAR    |
| 9   | 144-050   | BEARING - SPHERICAL                                      | 54 | 2262640 | PIN-HINGE DOOR                    | 105  | 2262301 | PULLEY- FOOT PEDAL                  |
| 10  | 188-052   | BRUSH ASSEMBLY [2.EA ]                                   | 55 | 2260183 | KNOB-HINGE COVER A/T FW           | 106  | 2266400 | COVER-PULLEY STAMPING               |
| 11  | 725-033   | BRUSH RETENTION- PAPER TUBE                              | 56 | 2251600 | ROPE- 31"                         | 107  | 2223430 | SCREW-#8X 3/4 PPH TYPE 25 SS [4.EA] |
| 12  | 738-030   | BRUSH PLATE W/HOLDER 3.25                                | 57 | 2267200 | LATCH LEVER                       | 108  | 2254031 | SWITCH-MOM/OFF/COM                  |
| 13  | 784-036   | BEARING RETAINER   | 58 | 2263800 | STRAP-HOLD DOWN                   | 109  | 2266412 | SWITCH PLATE, FT PEDAL              |
| 14  | 991-025   | WASHER- FELT   | 59 | 2261910 | BRACKET HOLD DOWN STRAP           | 110  | 2332103 | SCREW-6-20 X 3/8 THD [2.EA]         |
| 15  | 975-032   | SPRING- COMPRESSION [2.EA]                               | 60 | 2260500 | PIN-ROLL LATCH LEVER [2.EA]       | 113  | 2261208 | WIRE HARNESS, A/T FT. PED           |
| 16  | 116-020   | BALL- STEEL  | 61 | 2263440 | SCREW-10-24 X 3 4                 | 114  | 2267500 | CABLE ASSEMBLY-RIGHT 5'             |
| 17  | 303-039   | THRUST DISC- METAL                                       | 62 | 2333101 | NUT-HEX 3HP-SS NYLOC              | 115  | 2267510 | CABLE ASSEMBLY-LEFT 5'              |
| 18  | 701-007   | **O-RING [2. EA]   | 63 | 2772015 | TUBE W/BEARING RACE ASSEMBLY      | 116  | 2265430 | CABLE JACKET 5'                     |
| 19  | 701-039   | **O-RING MK406460  | 63 | 2272066 | TUBE OUTER-18" 4 HOLES            | 117  | 2265110 | BOOT-CONTROL BOX                    |
| 20  | 701-041   | **O-RING   | 64 | 2266260 | BEARING RACE                      | 118  | 2265115 | BOOT-FOOT PEDAL BASE                |
| 21  | 830-001   | SCREW- SELF-THREAD 8-32X1.7 [2.EA ]                      | 65 | 2266220 | BEARING RACE-STEEL                | 119  | 2372100 | SCREW-8-18 X 5/8 THD [2.EA]         |
| 22  | 830-078   | THRU BOLT 8-32 X 8.96 [2.EA]                             | 66 | 2266000 | BEARING BALL-STEEL [2.EA]         | 120  | 2261714 | WASHER-MAXXUM FT PDL [2.EA]         |
| 23  | 990-067   | WASHER- STEEL THRUST                                     | 67 | 2266115 | BEARING CONE                      | 121  | 2261901 | BRACKET-CONDUIT AT/MAX              |
| 24  | 990-070   | WASHER- NYLATRON [2.EA]                                  | 68 | 2261619 | COLLAR HALF-ZINC- [2.EA]          | 122  | 2301310 | SCREW-8-18 X 1/2 [2.EA]             |
| 25  | 2068050   | MTR ASSEMBLY 12V 3.25 5SPD                               | 69 | 2263452 | SCREW-1/4X20 X 3/4 SHCS SS [2. A] | 123  | 2263210 | BRACKET- CONDUIT ADJUSTMENT         |
| 26  | 2032063   | TUBE (COMP)W/CSK HOLE 42"                                | 70 | 2260285 | COVER-CTR BOX AT/FC OLIVE         | 124  | 2262720 | SPRING-CONDUIT ADJUSTMENT           |
| ■   | 1378126   | PROPELLER KIT  | 71 | 2372100 | SCREW-8-18 X 5/8 THD [4.EA]       | 125  | 2263463 | SCREW-1/4-20 X 2 STL PPH            |
| 27  | 2061125   | PROPELLER W/WEDGE  | 72 | 2265621 | DECAL-COVER 40AT/FC               | 126  | 2261225 | LEADWIRE-BATTERY                    |
| 28  | 2151726   | WASHER- 5/16 SS  | 73 | 2260150 | POINTER DISC TRNSLCNT RED         | 127  | 2020700 | TERMINAL RING, 3/8" [2.EA]          |
| 29  | 2053101   | NUT-PROP NYLOC   | 74 | 2265800 | DECAL-INDICATOR                   | 128  | 2256300 | TIE WRAP-5.5" BLACK                 |
| 30  | 2092600   | PIN-DRIVE SS   | 75 | 2053414 | SCREW-8-32 X 1/2 TRI LOBE [3. EA] | 129  | 2263201 | CLAMP WIRE HARNESS MICRO            |
| 31  | 2265631   | DECAL- MOTOR REST AT [2.EA]                              | 76 | 2267800 | GEAR-INDICATOR                    | 130  | 2332103 | SCREW-6-20 X 3/8 THD                |
| ■   | 2991871   | STD-BOWMT AT FW OLIVE                                    | 77 | 2301310 | SCREW-8-18 X 1/2 SS               | 131  | 2260301 | CONNECTING WIRE -SWITCH             |
| 32  | 2264223   | ARM-UPPER,STD,FW   | 78 | 2375400 | SHRINK TUBE-1/4OD X 1-3/4 [2. EA] | 132  | 2260312 | WIRE,BLK W/WHT- 19 1/2              |
| 33  | 2265120   | BUMPER -UPPER ARM  | 79 | 2355410 | SHRINK TUBE-3/8 OD X 2 [2. EA]    | 133  | 2260322 | WIRE,BLK W/BLUE -12"                |
| ■   | 2774310   | ARM-LOWER FW ASSEMBLY<br>[INCL. 34,45,46,47,48,49,40,56] | 80 | 2232360 | PULLEY-CABLE DRUM                 | 134  | 2266414 | BOTTOM PLATE MAX FOOT               |
| 34  | 2254355   | ARM-LWR FW MCHD STD                                      | 81 | 2261730 | WASHER-NYLON A/T                  | 135  | 9953104 | SCREW-8 X 1/2" SS [8.EA]            |
| 35  | 2263900   | MOTOR REST   | 82 | 2996245 | TOP BEARING RACE/ PINION DR.      | 136  | 2256301 | TIE WRAP 5.5 WHITE                  |
| 36  | 2251926   | BOW PLATE-AT FW OLIVE                                    | 84 | 2263410 | SCREW-8-32 X 5/16 ZN PL [2.EA]    | 137  | 2262536 | CONTROL BOX-PLASTIC AT OLIVE        |
| 37  | 2293801   | TUBE LOCK-"D"  | 85 | 2790002 | FOOT PEDAL/PLUG ASSEMBLY AT       | 139  | 2267800 | GEAR-INDICATOR [2.EA]               |
| *38 | 2264705   | INSERT-HINGE BASE STD MT                                 | 86 | 2263700 | PUSH-BUTTON FOOT PEDAL            | 140  | 2262220 | INDICATOR-DRIVE                     |
| 39  | 2260506   | HINGE-PIN HEADLESS ZINC [2.EA]                           | 87 | 2302732 | SPRING-LOWER PEDAL SS             | 141  | 2261905 | BRACKET/INDICATOR                   |
| 40  | 2150400   | PULL-GRIP  | 88 | 2264020 | SWITCH MOMENTARY                  | 142  | 2301310 | SCREW-8-18 X 1/2 (SS                |
| 41  | 2236000   | BEARING NYLINER- [2.EA]                                  | 89 | 2265140 | BOOT-MICROSWITCH                  | ■    | 2994837 | BAG ASSEMBLY-(INCL143,144,145,146   |
| 42  | 2303431   | SCREW 1/4-20X5/8"PPH [4. EA]                             | 90 | 2262114 | SCREW-MOUNTING/SWITCH [2.EA]      | *143 | 2263462 | SCREW 1/4-20X2 SS [4.EA]            |
| 43  | 2293511   | BOLT-UPPER ARM W/LOCTITE [4.EA]                          | 91 | 2233100 | NUT-SWITCH MOUNT [2.EA]           | *144 | 2261713 | WASHER-1/4 FLAT 18-18 [4.EA]        |
| 44  | 2293500   | BUSHING-SHOULDER UPPER ARM [2.EA]                        | 92 | 2264026 | SWITCH-S SPEED                    | *145 | 2263103 | NUT- 1/4-20 NYLOC-JAM [4.EA]        |
| 45  | 2152610   | SPRING-PIN LOCKEAR                                       | 93 | 2261701 | LOCKWASHER-STAR                   | *146 | 2301720 | WASHER.MOUNTING RUBBER [6. EA]      |
|     |           |  | 94 | 2263105 | NUT-HEX                           |      |         |                                     |

\*\*Seal & Oring Kit P/N 2883460

THIS ITEM IS PART OF AN ASSEMBLY.THIS ITEM CANNOT BE SOLD SEPARATELY DUE TO MACHINING AND /OR ASSEMBLY THAT IS REQUIRED.

P/N 2264961 REV.A 7-01



For parts and service  
 call toll free: 1-888-404-1119  
[www.mikesreelrepair.com](http://www.mikesreelrepair.com)