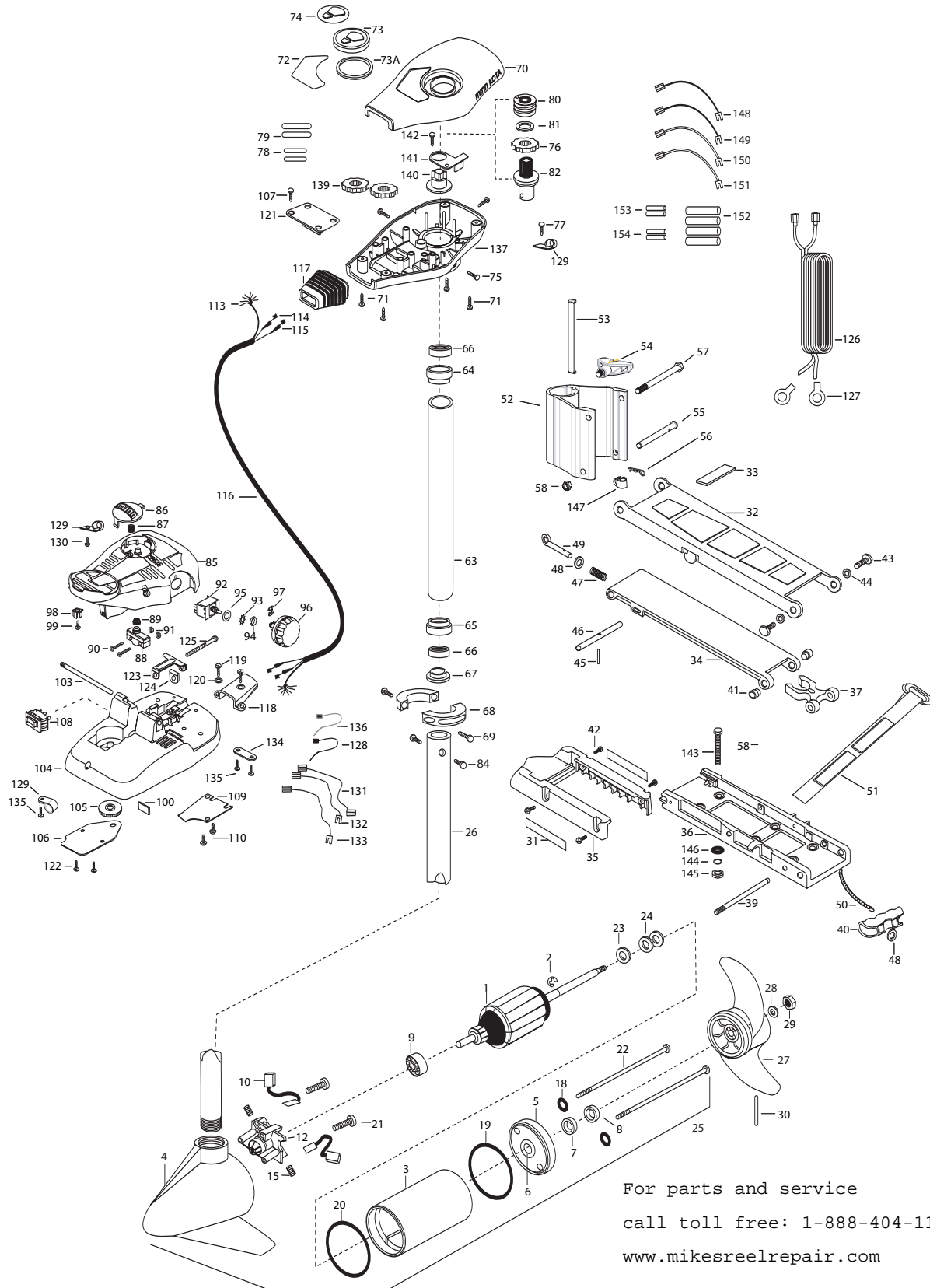


40AT
40 LBS THRUST
12 VOLT 42 AMPS
36" - 42" - 48"
SHAFT

for use with "AH" serial numbers
2-year warranty from the date of purchase

For parts and service
call toll free: 1-888-404-1119
www.mikesreelrepair.com



For parts and service
call toll free: 1-888-404-1119
www.mikesreelrepair.com

1	2-100-201	ARM ASSEMBLY 12V 3.25	49	2153600	EYE SHAFT-CAD.PLATE	100	2266413	TENSION SCREW PLATE FT PEDL
2	788-015	RETAINING RING	50	2251601	ROPE- 40"	103	2260511	PIN-PIVOT A/T FT PDL
3	2-200-079	HOUSING ASSEMBLY CENTER 3.25 TXT	51	2263805	VELCRO STRAP	104	2992104	FT PEDAL BASE/PIN ASSEMBLY SONAR
4	2-300-132	HOUSING- ASSEMBLY BRUSH END 3.25	52	2261831	1 PIECE HINGE	105	2262301	PULLEY- FOOT PEDAL
5	SP.CO		53	2268610	TENSION PLATE	106	2266401	COVER-PULLEY STAMPING
6	2-400-128	PLAIN END HOUSING ASSEMBLY	54	2050919	HANDLE TENSION	107	2223430	SCREW-#8X 3/4 PPH TYPE 25 SS [4.EA]
7	144-049	BEARING- FLANGE [SERVICE ONLY]	55	2262608	CLEVIS PIN	108	2254031	SWITCH-MOM/OFF/COM
8	880-003	SEAL	56	2260801	HAIR SPRING CLIP	109	2266412	SWITCH PLATE, FT PEDAL
9	880-006	SEAL WITH SHIELD	57	2383410	BOLT 3/8-16 X 6"	110	2332103	SCREW-6-20 X 3/8 THD [2.EA]
10	140-010	BEARING -BALL	58	9950153	NUT 3/8-16 NYLOC	113	2261208	WIRE HARNESS, A/T FT. PED
12	188-052	BRUSH ASSEMBLY [2.EA]	■	2772015	TUBE W/BEARING RACE ASSEMBLY 18"	114	2267505	CABLE ASSEMBLY-RIGHT 5'
15	738-030	BRUSH PLATE W/HOLDER 3.25		2772012	TUBE W/BEARING RACE ASSEMBLY 21"	115	2267515	CABLE ASSEMBLY-LEFT 5'
18	975-032	SPRING- COMPRESSION [2.EA]	63	2272066	TUBE OUTER-18" 4 HOLES	116	2265430	CABLE JACKET 5'
19	701-007	O-RING [2. EA]		2272064	TUBE OUTER -21" 4 HOLES	117	2265110	BOOT-CONTROL BOX
20	701-039	O-RING MK406460	64	2266260	BEARING RACE	118	2265115	BOOT-FOOT PEDAL BASE
21	701-041	O-RING	65	2266220	BEARING RACE-STEEL	119	2372100	SCREW-8-18 X 5/8 THD [2.EA]
22	830-001	SCREW- SELF-THREAD 8-32X1.7 [2.EA]	66	2266000	BEARING BALL-STEEL [2.EA]	120	2261714	WASHER-MAXXUM FT PDL [2.EA]
23	830-078	THRU BOLT 8-32 X 8.96 [2.EA]	67	2266115	BEARING CONE	121	2261901	BRACKET-CONDUIT AT/MAX
24	990-067	WASHER- STEEL THRUST	68	2261619	COLLAR HALF-ZINC- [2.EA]	122	2301310	SCREW-8-18 X 1/2 [2.EA]
25	990-070	WASHER- NYLATRON [2.EA]	69	2263452	SCREW-1/4X20 X 3/4 SHCS SS [2. A]	123	2263210	BRACKET- CONDUIT ADJUSTMENT
26	2068250	MTR ASSEMBLY 12V 3.25 5SPD	70	2260284	COVER-CTR BOX AT/FC BLK	124	2263104	NYLOCK KEEPER
	2032062	TUBE (COMP)W/CSK HOLE 36"	71	2372100	SCREW-8-18 X 5/8 THD [4.EA]	125	2263466	SCREW-1/4-20 X 2 STL PPH
	2032064	TUBE (COMP)W/CSK HOLE 48"	72	2265621	DECAL-COVER 40AT/FC	126	2261225	LEADWIRE-BATTERY
■	2032063	TUBE (COMP)W/CSK HOLE 42"	73	2260150	POINTER DISC TRNSLCNT RED	127	2020700	TERMINAL RING, 3/8" [2.EA]
27	1378126	PROPELLER KIT	73A	2261733	WASHER - FOAM, INDICATOR	128	2256300	TIE WRAP-5.5" BLACK
28	2061125	PROPELLER W/WEDGE	74	2265800	DECAL-INDICATOR	129	2263201	CLAMP WIRE HARNESS MICRO
29	2151726	WASHER- 5/16 SS	75	2053414	SCREW-8-32 X 1/2 TRI LOBE [3. EA]	130	2332103	SCREW-6-20 X 3/8 THD
30	2053101	NUT-PROP NYLOC	76	2267800	GEAR-INDICATOR	131	2260301	CONNECTING WIRE -SWITCH
31	2092600	PIN-DRIVE SS	77	2301310	SCREW-8-18 X 1/2 SS	132	2260312	WIRE,BLK W/WHT- 19 1/2
■	2265631	DECAL- MOTOR REST AT [2.EA]	78	2375400	SHRINK TUBE-1/4OD X 1-3/4 [2. EA]	133	2260322	WIRE,BLK W/BLUE -12"
32	2771831	STD-BOWMT FW W/1PEICE HINGE	79	2355410	SHRINK TUBE-3/8 OD X 2 [2. EA]	134	2263205	LEADWIRE CLAMP
33	2264221	ARM-UPPER,STD,FW	80	2232360	PULLEY-CABLE DRUM	135	9953104	SCREW-8 X 1/2" SS
■	2265120	BUMPER -UPPER ARM	81	2261730	WASHER-NYLON A/T	136	2256301	TIE WRAP 5.5 WHITE
	2774310	ARM-LOWER FW ASSEMBLY [INCL. 34,45,46,47,48,49,40,56]	82	2776203	BEARING RACE/ PINION ASSEMBLY	137	2262535	CONTROL BOX-PLASTIC
			84	2263410	SCREW-8-32 X 5/16 ZN PL [2.EA]	139	2267800	GEAR-INDICATOR [2.EA]
34	2254353	ARM-LWR FW MCHD	85	2790002	FOOT PEDAL/PLUG ASSEMBLY AT	140	2262220	INDICATOR-DRIVE
35	2263900	MOTOR REST	86	2263700	PUSH-BUTTON FOOT PEDAL	141	2261905	BRACKET/INDICATOR
36	2251937	BOW PLATE-D C MCHD	87	2302732	SPRING-LOWER PEDAL SS	142	2372100	SCREW-8-18 X 5/8 (SS)
37	2293804	TUBE LOCK	88	2264020	SWITCH MOMENTARY	■	2994837	BAG ASSEMBLY-(INCL143,144,145,146
39	2260506	HINGE-PIN HEADLESS ZINC [2.EA]	89	2265140	BOOT-MICROSWITCH	*143	2263462	SCREW 1/4-20X2 SS [4.EA]
40	2150400	PULL-GRIP	90	2262114	SCREW-MOUNTING/SWITCH [2.EA]	*144	2261713	WASHER-1/4 FLAT 18-18 [4.EA]
41	2236000	BEARING NYLINER- [2.EA]	91	2233100	NUT-SWITCH MOUNT [2.EA]	*145	2263103	NUT- 1/4-20 NYLOC-JAM [4.EA]
42	2303431	SCREW 1/4-20X5/8"PPH [4. EA]	92	2264026	SWITCH-S SPEED	*146	2301720	WASHER MOUNTING RUBBER [6. EA]
43	2293511	BOLT-UPPER ARM W/LOCTITE [2.EA]	93	2261701	LOCKWASHER-STAR	147	2262310	GUIDE ROPE
44	2293500	BUSHING-SHOULDER UPPER ARM [4.EA]	94	2263105	NUT-HEX	148	2030316	WIRE EXT. 10 GA. 18" BLACK
45	2152610	SPRING-PIN LOCKEAR	95	2261715	SPACER-SWITCH 5 SP MODELS	149	2030317	WIRE EXT. 10 GA. 18" RED
46	2233600	LOCK BAR- BOW MOUNT	96	2260170	KNOB-SPEED CONTROL 5SPD	150	2030312	WIRE EXT. 16 GA. 18" WHITE
47	2152700	SPRING-LOCKBAR CAD.PLT	97	2263000	E-RING TRU-ARC	151	2030313	WIRE EXT. 16 GA. 18" YELLOW
48	2151700	WASHER-EYE SHAFT .562 OD [2.EA]	98	2260730	CONNECTOR 1/4 MALE TAB	152	2375400	SHRINK TUBING 1/4" X 1" [4 EA.]
			99	2332103	SCREW-6-20 X 3/8	153	2030710	BUTT CONNECTOR LARGE [2 EA.]
						154	2030711	BUTT CONNECTOR SMALL [2 EA.]

Seal & O-Ring Kit is p/n 2883460 * THIS ITEM IS PART OF AN ASSEMBLY. THIS ITEM CANNOT BE SOLD SEPARATELY DUE TO MACHINING AND/OR ASSEMBLY THAT IS REQUIRED. P/N 2274916 REV. F 10-06
For parts and service

FIVE SPEED SWITCH

RED+

WHITE CONNECTING WIRE

MOMENTARY SWITCH

MOM/OFF/CON
SWITCH

RED

RED CONNECTING WIRE

YELLOW

WHITE

BLACK-

TERMINAL BLOCK

BLACK

For parts and service
call toll free: 1-888-404-1119
www.mikesreelrepair.com

