

Thank You!

Thank you for choosing Humminbird®, America's #1 name in fishfinders. Humminbird® has built its reputation by designing and manufacturing top-quality, thoroughly reliable marine equipment. Your Humminbird® is designed for trouble-free use in even the harshest marine environment. In the unlikely event that your Humminbird® does require repairs, we offer an exclusive Service Policy-free of charge during the first year after purchase, and available at a reasonable rate after the one year period. For complete details, see the separate warranty card. We encourage you to read this operations manual carefully in order to get the full benefit from all the features and applications of your Humminbird® product.

The following components are included with the Wireless Sonar Link (WSL) Accessory:

- One Remote Sonar Sensor - RSS™ - Channel A with a built-in, non-replaceable battery
- One Wireless Sonar Link (WSL)
- Hardware mounting kit
- Wireless Sonar Link Accessory Manual.

NOTE: The WSL also comes in an International version that is CE-compliant.

NOTE: The WSL requires the support of control head software version 2.100 or higher. You may need to obtain an upgrade from www.humminbird.com.

NOTE: If you need to upgrade your control head software, you will need to purchase the PC Connect cable from Humminbird.

If any of these components are missing, please contact our Customer Resource Center at either 1-334-687-0503 or visit our website at www.humminbird.com.

WARNING! *Disassembly and repair of this electronic unit should only be performed by authorized service personnel. Any modification of the serial number or attempt to repair the original equipment or accessories by unauthorized individuals will void the warranty. Handling and/or opening this unit may result in exposure to lead, in the form of solder.*

WARNING! *This product contains lead, a chemical known to the state of California to cause cancer, birth defects and other reproductive harm.*

WARNING! *The bottom of the RSS should not be handled during sonar operation, as this may cause physical discomfort and may result in personal injury in the form of tissue damage. Handle the RSS only by the antenna tower when it has been in the water.*

WARNING! *The RSS (Remote Sonar Sensor) is not intended for use by children younger than 6 years old without adult supervision as the RSS may represent a choking hazard to small children.*

WARNING! *This device should not be used as a navigational aid to prevent collision, grounding, boat damage, or personal injury. When the boat is moving, water depth may change too quickly to allow time for you to react. Always operate the boat at very slow speeds if you suspect shallow water or submerged objects.*

How the WSL Works

The Wireless Sonar Link (WSL) is a line-of-sight accessory that works with your Fishfinder to receive remote sonar signals from a Remote Sonar Sensor (RSS). Radio signals from the RSS are received by the WSL and are transmitted over the Accessory Bus to the control head. The control head displays the remote sonar information in a variety of formats.

The WSL is a first-of-its-kind wireless Fishfinder that is incredibly easy to use. Simply attach the Remote Sonar Sensor (RSS) to the end of your fishing line and cast it into the water as you would a normal float or lure. Then power on the control head (with WSL attached and the correct version of control head software loaded) and you are ready to fish.

The WSL system uses sonar technology to send sound waves from the RSS into the water. The returned "echoes" are transmitted with wireless technology to the WSL and are plotted on your control head display.

New information appears on the right of the display. As this information moves to the left a very accurate picture of the underwater world is created, including the display of underwater objects such as the bottom, fish, and structures, as well as the depth of the bottom.

***WARNING!** The electronic parts in the Remote Sonar Sensor (RSS) are made to withstand use when casting into water. Because shock from abrupt contact with rocks can damage your RSS, we do NOT recommend using your RSS in water that is less than one foot (0.3 m) deep.*

Operational Modes

The RSS can be used to augment the sonar data retrieved by your control head in two distinct ways:

Sonar Graph: The RSS can be used to create a sonar graph of the bottom. Cast the RSS into the water beyond an area of interest. Retrieving the RSS slowly and steadily will produce a screen detailing structure, fish and bottom detail.

Stationary Float: The RSS can be used as a float in a stationary location to monitor the area below, giving you a live update as fish approach your bait.

Installation Overview

There are several installation tasks that you must perform before you are ready to use your Wireless Sonar Link Accessory:

- You will need control head version 2.100 or higher software in order to use your WSL. Your control head may already be running the correct software version. If not, you can obtain an upgrade free of charge from www.humminbird.com website. You will need to purchase the PC Connect Cable in order to load the update into the control head.
- Mount the WSL at a high place on your boat so that it is in direct line-of-sight with the RSS. Stem mounting is recommended (stem is not included.)
- Once the antenna is mounted on the boat, you will route the cable between the antenna and the control head, and plug it either directly into the control head or into the accessory bus daisy chain.
- Attach the RSS to a fishing line of the proper strength.

Once you have performed all these tasks, and powered on the control head, you will be ready to use your Wireless Sonar Link Accessory.

Determining the Software Version in the Control Head

NOTE: You must have an installed and functioning fishfinder to perform the following.

1. When you start up the control head, press the menu key while the Title Screen is displayed, select System Status from the Start-up Menu, then press the VIEW button until you see Self Test.
2. Self Test will display the results of an internal diagnostic self test, including the software version. Make sure that your control head software version is 2.100 or higher.
3. If you do need a software upgrade, it is available free of charge from the www.humminbird.com website. If you do not have a way to access the Internet, you may contact the Customer Resource Center to obtain a CD-ROM with the software upgrade you need for the cost of shipping and handling only.
4. You must use the PC Connect cable (separate purchase) to upload the software update from a PC to the control head. Please refer to the instructions included with the separate-purchase PC Connect Cable.

Mounting the WSL Antenna

The WSL antenna installation kit includes the following items:

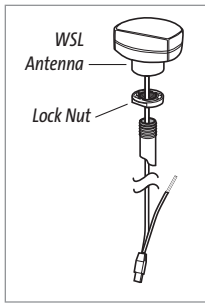
- WSL antenna with 20' (6 m) cable, including a pigtail connection for additional accessories
- Hardware kit (for stem- or deck-mounting, stem not included).

To optimize performance of the WSL, mount it in an area that will have direct line-of-sight to the water around the boat where you will be casting the RSS. Different circumstances determine the mounting method appropriate for your WSL antenna, but stem mounting is recommended because the higher the antenna is mounted, the better the line-of-sight will be. You can also use one of the deck mounting procedures if the mounting area is on a high point on your boat.

Refer to the following table to find the mounting procedure that makes the most sense for your boat:

If you have...	Then use the procedure:
An existing antenna stem with standard 1" - 14 thread	Stem Mount (Existing Stem with 1" - 14 Thread)
Under location access with deck less than 3/8" (10 mm)	Under Location Access with Thin Deck (Less Than 3/8" or 10 mm)
Under location access with deck greater than 3/8" (10 mm)	Under Location Access with Thick Deck (More Than 3/8" or 10 mm)
No access under mounting location	Deck Mount (Cable Side - No Access Underneath)

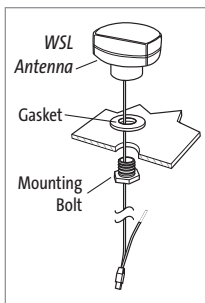
NOTE: When drilling holes in fiberglass hulls, it is best to start with a smaller bit and use progressively larger drill bits to reduce the chance of chipping or flaking the outer coating. Fill all drill holes with marine grade silicone sealant.



Stem Mount (Existing Stem with 1" - 14 Thread)

Follow these steps to stem mount the WSL antenna (stem not included):

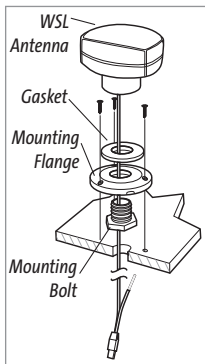
1. Determine the best mounting location, then make sure that there is sufficient cable to route to the Fishfinder. Mark the mounting location, then drill a $\frac{5}{8}$ " (15 mm) hole.
2. Place stem over $\frac{5}{8}$ " (15 mm) hole and mount with screws provided with stem.
3. Place lock nut on stem, thread down at least half way.
4. Route the WSL cable through the stem, then continue routing it through the deck surface to the control head.
5. Thread the WSL onto the stem. Tighten lock nut with crescent wrench to secure the WSL antenna.



Under Location Access with Thin Deck (Less Than $\frac{3}{8}$ " or 10 mm)

Follow these steps to mount the WSL antenna onto a deck that is thinner than $\frac{3}{8}$ " (10 mm), routing the cable down through the mounting surface:

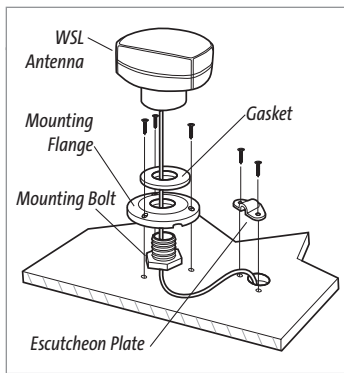
1. Determine the best mounting location, then make sure there is sufficient cable to route to the Fishfinder.
2. Mark mounting location and drill a 1" (25 mm) hole.
3. Insert mounting bolt through 1" (25 mm) hole from lower side of the mounting surface.
4. Place the gasket over the mounting bolt, then route the WSL cable down through the mounting bolt to the control head.
5. Position the WSL over the mounting bolt, then secure in place.



Under Location Access with Thick Deck (More Than $\frac{3}{8}$ " or 10 mm)

Follow these steps to mount the WSL antenna onto a deck that is thicker than $\frac{3}{8}$ " (10 mm), routing the cable down through the mounting surface:

1. Determine the best mounting location, then make sure that there is sufficient cable to route to the fishfinder.
2. Place the mounting flange over your mounting location and mark the following locations for drill holes: through the center of the mounting flange for the WSL cable, and through the three mounting holes for the mounting flange.
3. Remove the mounting flange and drill a $\frac{5}{8}$ " (15 mm) hole at the center location and drill the three $\frac{3}{16}$ " (3.5 mm) mounting holes.
4. Assemble the mounting flange, mounting bolt, and gasket, then place over the $\frac{5}{8}$ " (15 mm) center hole. Secure in place with three #8 x $\frac{5}{8}$ " flat head screws.
5. Position the WSL over the center hole and route the cable through the center hole, then secure in place.
6. Route the WSL cable to the control head.



Deck Mount - Cable Side, No Access Underneath

Follow these steps to deck mount the WSL antenna in a situation where you must route the cable to the side because there is no space for a cable underneath the mounting location:

1. Determine the best mounting location, then make sure that there is sufficient cable to route to the fishfinder.
2. Place the mounting flange over the mounting location and mark through the three mounting holes for drilling.
3. Remove the mounting flange and drill holes using a $\frac{3}{64}$ " (3.5 mm) drill bit.
4. Break out the marked tab on the bottom side, outer rim of the mounting flange.
5. Pre-assemble the mounting flange, mounting bolt, and gasket with the WSL, routing the cable through all components; tighten the WSL antenna until its base is in contact with the gasket, making certain that the notch in the mounting bolt is aligned with the breakout tab in the mounting flange.
6. Position the WSL in the mounting location and secure the flange with three #8 x $\frac{5}{8}$ " flat head screws. To access all screws you will need to rotate the WSL. When finished, secure tightly.
7. Determine a hole location where access for cable routing is available.
8. Drill a $\frac{5}{8}$ " (15 mm) hole at this location and route the cable through the hole.
9. Install the escutcheon plate at this location with two #8 x $\frac{5}{8}$ " flat head screws.
10. Route the cable to the control head.

Connecting the WSL to the Control Head

- 1a. Attach the WSL to your control head COM port using the longer, male end of the cable from the WSL.

Or...

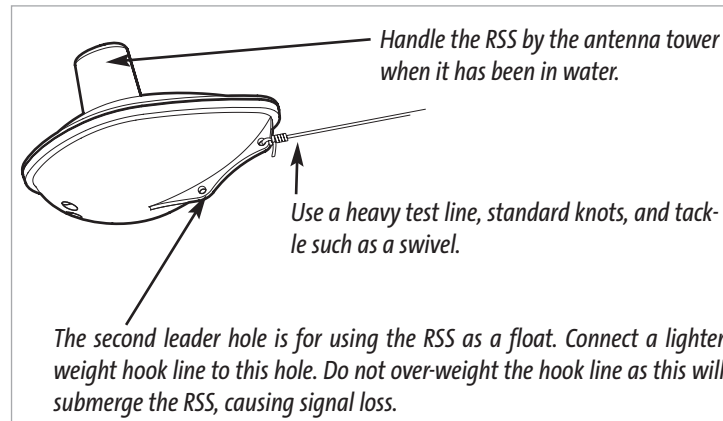
- 1b. If you are already using another accessory plugged into the COM connector, you can attach the WSL to the already-attached accessory's extra cable.

Or...

- 1c. If you have a GPS receiver plugged into the control head, you must use the AS-YC ("Y") cable that was included in your GPS Hardware Kit so that you can use both the accessories and your GPS receiver at the same time. Attach the COM connector of the "Y" cable directly to your control head COM port. Attach the GPS receiver to the NMEA-COM connector of the "Y" cable and re-connect your accessories to the ACCY-COM connector of the "Y" cable.
2. Power up the control head (see your control head Operation Manual for details).
3. When the control head detects the WSL, the SmartCast WSL View will be added automatically to the VIEW key function. A SmartCast WSL menu choice will be added to the Accessory menu tab, and the WSL X-Press menu will also be added automatically to the Menu system.

Attaching the RSS

The line coming from your reel can be tied off to the front hole in the Remote Sonar Sensor (RSS). If you wish to also use the RSS as a conventional float, use the second hole to attach your hook using a lighter weight line. A snag will break the lighter line if you have to break free. Slip line techniques are not recommended because of the higher risk of losing the RSS. If you do use the slip line method, use a lighter weight line after the lower stop, enabling retrieval of the RSS if the lower line with hook breaks away.



CAUTION: You will increase the possibility of breaking your line if you use light test pound line on your reel. The RSS is positively buoyant (is buoyant under its own weight plus 0.2 ounces or 5.7 g of bait and lead weight.) The maximum amount of weight for any attachment to the RSS is approximately $\frac{1}{8}$ to $\frac{1}{4}$ ounces (5.3 g to 5.8 g), and includes the combined weight of any hook, line, weight, swivel/snap swivel and bait that is attached to the RSS. The RSS itself weighs 1 ounce (28 g), and therefore light test line might break.

RSS Power and Battery Life

The Remote Sonar Sensor (RSS) has a separate, non-replaceable lithium battery that has a shelf life of three years and will last for approximately 400 hours of in-water use. Discard the used RSS in compliance with local laws as you would any electronic component or battery.

The RSS has contacts that perceive when the device is immersed in the water. These contacts turn on the Sonar Transmitter/Receiver and begin transmitting the sonar information via RF to the WSL. The RSS automatically stops using power a few seconds after being pulled out of the water.

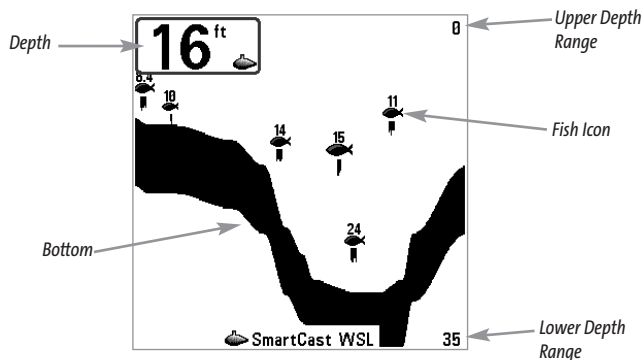
WARNING! Store the RSS in a dry, non-metallic container, such as a tackle box, in a separate compartment, and isolated from any metallic devices when not in use to conserve power. Never place the RSS in a wet area of a boat or on a metal surface when not in use as this could turn it on and shorten its usable life.

NOTE: If the RSS was used in salt water, rinse it with fresh water before storing it.

Operating the WSL Accessory

When the WSL Accessory is attached to the control head, a SmartCast WSL View is added to the control head view rotation. When you press the VIEW key repeatedly, views are displayed cyclically. Any of the views, including the SmartCast WSL View, can be removed or added to the rotation list using the Select Views menu choice from the Setup Menu when in Advanced Mode (see your control head Operation Manual for more information).

The following graphic shows the SmartCast WSL View:



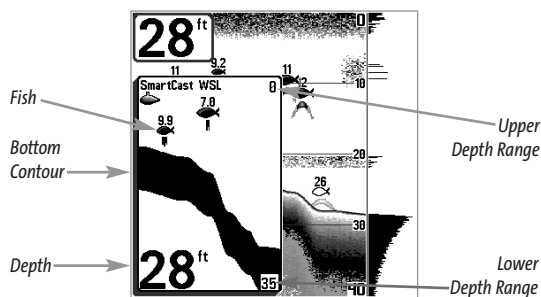
NOTE: When the RSS is in the water within line-of-site of the WSL, the SmartCast WSL View will display sonar returns from the RSS. When the RSS is not in the water or reception is being blocked, the "SmartCast WSL signal not detected" message will be displayed.

The SmartCast WSL View displays underwater sonar information in an easy to understand format. The top of the display corresponds to the water surface, and the bottom of the display corresponds to the selected Depth Range (see Depth Range). The display varies as the area under the RSS changes. Reeling in the RSS at a slow and steady rate will allow you to graph the bottom for structure, detail and fish. Digital readouts provide precise information for bottom contour, depth and fish locations below the RSS.

Underwater conditions vary greatly, so some experience and interpretation is needed to realize all the benefits of the WSL Accessory - use the picture above as a guide to the most common conditions and practice using the RSS over known bottom types.

WSL PIP View

The Picture in Picture (PIP) WSL View will appear if the PIP menu choice has been either turned "on" or set to "auto" from the SmartCast WSL menu (see **WSL Accessory Submenu**) and will only appear after the RSS has been cast into the water. The PIP View is superimposed on every view in the view rotation with the exception of the WSL full screen view. Use the 4-Way Cursor Control key to re-position the PIP view on the display. The following graphic shows the WSL PIP View superimposed on the Sonar View:

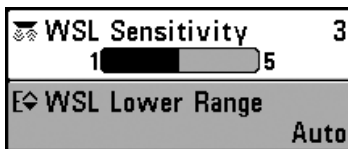


NOTE: When the RSS is in the water within line-of-site of the WSL, the PIP View will display sonar returns from the RSS. When the RSS is not in the water or reception is being blocked, the "SmartCast WSL signal not detected" message will be displayed.

WSL X-Press™ Menu

When the SmartCast WSL View is displayed, pressing the MENU key once will display the WSL X-Press menu. The WSL X-Press menu represents the settings most frequently used to optimize the WSL performance.

NOTE: The WSL X-Press Menu can only be accessed from the SmartCast WSL Full Screen view. It is not available in the PIP view.

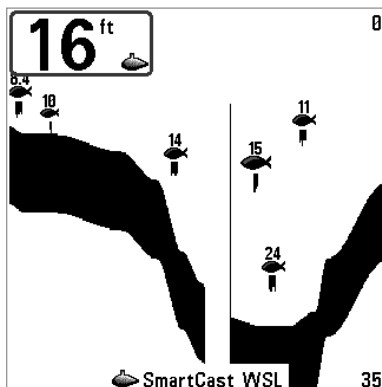


WSL Sensitivity - Select a higher number to show weaker sonar returns on the display, or a lower number to remove clutter from the display. Adjusting Sensitivity also affects how sonar returns are identified as Fish ID Symbols - more fish will be detected at the highest setting of 5, fewer at the lowest setting of 1. (1, 2, 3, 4, 5, Default = 3)

WSL Lower Range: WSL Lower Range sets the deepest depth range that will be displayed. Automatic is the default setting. When in automatic mode, the lower range will be adjusted by the unit to follow the bottom. Selecting a specific setting locks the depth range into Manual mode. Use WSL Lower Range to view a specific depth range manually resulting in a greater level of detail for the selected depth range to be shown on the display. M will be displayed in the lower right corner of the display to indicate the unit is in Manual mode. (Auto, 10 - 100 Ft, Default = Auto)

NOTE: In manual operation, if the water depth is greater than the depth range setting, the bottom will not be visible on-screen. Select AUTO to return to automatic operation.

Depth scale changes or signal loss will cause lines with missing detail and/or abrupt changes in the graphed bottom. When the Depth Range is set to AUTO, the depth is set to keep the bottom in the lower third of the screen. The screen image jump shown here is due to an automatic change in depth. New returns graphed at a different scale will not match up with the historic data already graphed at a higher or lower scale. Vertical lines can also occur as the radio signal from the RSS is lost and then regained in rough water conditions.



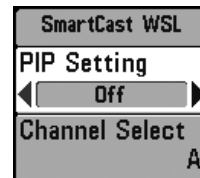
WSL Accessory Submenu

When the WSL Accessory is attached to the control head, the Accessory menu tab in the Main Menu System will contain an additional SmartCast WSL menu choice which, when selected, leads to the SmartCast WSL Accessory Submenu.

Press the MENU key twice to access the Main Menu tab choices. Use the 4-Way Cursor Control key to select the Accessory tab, and then scroll down to select the SmartCast WSL menu choice - use the RIGHT Cursor Control key to enter the WSL Accessory Submenu.



**Accessory Menu:
with Wireless Sonar
Link added**



WSL Accessory Submenu

PIP (Picture in Picture) Setting - This menu choice sets whether the PIP view is Off, On or set to Auto.

When set to **Off**, the PIP View is not available in the view rotation.

When set to **On**, the PIP View will be superimposed on all views (with the exception of the full screen WSL View) the first time that the RSS is cast into the water. When the RSS is out of the water or if the signal reception is being blocked, the message "SmartCast WSL signal not detected" will appear. The PIP View can be removed from the view rotation by pressing the EXIT key. The next time the RSS enters the water, the PIP View will be displayed again.

When set to **Auto**, the PIP View will be superimposed on all views (with the exception of the full screen WSL view) the first time that the RSS is cast into the water. When the RSS is out of the water or if the signal reception is being blocked, the message "SmartCast WSL signal not detected" will flash on the PIP View and the PIP View will then be removed automatically from the view rotation. The next time you cast the RSS back into the water, or if signal reception is regained, the PIP View will be displayed automatically. (Off, On, Auto, Default = Off)

Channel Select: This menu choice should be set to A for the Channel A RSS that is shipped with your WSL Accessory. If you buy a replacement RSS that is hard-wired as a Channel B, then you must change this setting to B. Select either A or B to match your RSS. See Channel A and B RSS Units. (Channel A or Channel B, Default = Channel A)

Channel A and B RSS Units

There are two versions of the RSS that are available at your local tackle dealer, major outdoor retailers, or at www.humminbird.com: Channel A and Channel B.

The **Channel A** RSS unit comes standard with the WSL Accessory. You also have the option to purchase additional Channel A or Channel B RSS units. When using the A or B version of the RSS, make sure to select the appropriate channel in the Channel menu choice from the WSL Accessory Submenu on the control head.

The **A&B Channel Option** gives you the flexibility to use a different type of RSS than the one you are currently using if another angler is using a SmartCast product within 100 feet (30 m) of your RSS. Two Channel A or two Channel B RSS units in the water within 100 feet (30 m) of the display will cause RF interference that prevents the product from functioning properly, resulting in fluctuating depth readings and excessive clutter on the screen. If you use a Channel B RSS while another angler is using a Channel A RSS or vice versa, the interference will be reduced but not completely eliminated.

NOTE: RSS units, regardless of Channel, either in close proximity to each other or to other sonar devices (closer than 40 feet or 12 m) can also experience or cause sonar interference, which may result in erratic depth readings.

Maintenance

Your WSL Accessory is designed to provide years of trouble-free operation with virtually no maintenance. Follow these simple procedures to ensure your WSL continues to deliver top performance.

If the WSL comes into contact with salt spray, wipe the affected surfaces with a cloth dampened with fresh water.

After using the RSS in salt water, wipe the affected surfaces with a cloth dampened with fresh water. The RSS Wet Switch™ pins must be rinsed with fresh water after exposure to salt water to prevent corrosion.

If your RSS remains out of the water for a long period of time, it may take some time to wet it when returned to the water. Small air bubbles can cling to the surface of the RSS and interfere with proper operation. Wipe the face of the RSS with a wet cloth to remove them.

If sonar performance becomes weak (i.e., there are bottom gaps or "0" depth readings) the bottom of the RSS needs to be cleaned with a drop or two of a 5 to 10 percent solution of liquid dishwashing detergent and water. Use approximately one tablespoon (15 ml) detergent to 8 ounces (237 ml) of water to remove oils from the face of the RSS, then wipe with a damp cloth.

Never leave the WSL or RSS in a closed car or trunk - the extremely high temperatures generated in hot weather can damage the electronics.

Troubleshooting

Do not attempt to repair the RSS or the WSL yourself. There are no user serviceable parts inside, and special tools and techniques are required for assembly to ensure the waterproof integrity of the housings. Repairs should be performed only by authorized Humminbird technicians.

Many requests for repair received by Humminbird involve units that do not actually need repair. These units are returned "no problem found." If you have a problem with your RSS or WSL, use the following troubleshooting guide before calling the Customer Resource Center or sending your unit in for repair.

1. The control head does not display the WSL View, or any of the RSS or WSL menu choices:

First, verify that you have the correct version of software running in your control head. You should have version 2.100 or higher. If you do not, go to the procedure described under Determining the Software Version in the Control Head and upload the correct version of software.

Second, make sure the cable connecting the WSL unit to the control head is installed and connected correctly. If the WSL View still does not display, make sure that the Select Views menu selection (Setup menu, Advanced user mode) is set to display the WSL View.

Third, the battery on your RSS may have died. You will need to replace the RSS with a new one, as the battery is non-replaceable.

2. The Wireless Sonar Link loses signal (the Loss of Signal message) appears on the control head screen:

RSS battery voltage is below a given threshold, and the battery may even be dead. If the WSL is not able to get an RF signal from the RSS, the control head WSL View display will stop updating (the screen will freeze) and the WSL Loss of Signal message ("SmartCast WSL signal not detected") will be displayed after several seconds. Whenever reception is lost or the RSS emerges from the water for more than a few seconds, the WSL Loss of Signal message will be displayed until the RSS is placed back in the water and reception is regained.

- The WSL system is a line-of-sight wireless product. If objects are placed between the RSS and the WSL, the reception may be lost.
 - The RSS depth range is 2 to 100 feet (0.6 to 30 meters). Erratic readings may occur in water that is shallower than 2 feet (0.6 m). In addition, because of the nature of sonar, this product is not intended for use in swimming pools or small, enclosed bodies of water.
 - Reeling in the RSS too fast can cause loss of signal and the screen will freeze
 - Check the buoyant balance between the RSS and your tackle; over 0.2 ounce (5.7 g) will submerge the RSS, causing signal loss.
 - The RSS may not obtain its maximum RF distance of 100 feet (30 m) unless the water is smooth. Waves or chop may reduce the RF range significantly.
-

3. When in very shallow water, I get gaps in the bottom reading and inconsistent digital depth indication.

The RSS will work reliably in water 2 feet (0.6 m) or deeper. The depth is measured from the RSS. A transmitter (RSS) to receiver (Antenna) distance of greater than 100 feet (30 m) may result in signal loss. Excessively rough water may cause the RSS to submerge, again losing contact.

4. The WSL View shows many black dots at high sensitivity settings.

You are seeing noise or interference caused by one of several sources. Noise can be caused by other electronic devices. Turn off any nearby electronics and see if the problem goes away. Other sonar devices or any electronic device operating in the 900 MHz range (in the 400 MHz for International versions) could cause interference with your RSS.

5. The WSL View shows fluctuating depth readings and excessive clutter, including vertical bars that may be drawn on top of fish icons.

The WSL system comes with the capability to receive separate signals from a Channel A RSS or a Channel B RSS. Two A- or B-type RSS units used simultaneously, as well as one A- and one B-type RSS unit used simultaneously, can cause RF interference between each other.

6. The screen jumps and the bottom has an abrupt change; sometimes a vertical line is missing or a black line from top to bottom is displayed.

This screen image jump is due to an automatic change in depth. New returns graphed at a different scale will not match up with the historic data already graphed at a higher or lower scale. Vertical lines can also occur as the radio signal from the RSS is lost and then regained in rough water conditions.

Specifications

WSL Specifications

Power Requirement Provided by the control head
Integral Cabling 20 feet (6 m) cable

RSS Specifications

Internal Lithium Battery One non-replaceable RSS Lithium battery
Battery Expected Life 3 years (approximately 400 hours of in-water use)
Depth Capability 2 - 100 feet (0.6 - 30 meters)
Sonar Coverage 90° @-10 dB*
Sonar Operating Frequency 120 kHz
Operational Radio Frequency 916.5 MHz (International 433.92 MHz)
Operational Range 100 feet (30 m)

**Area of bottom coverage equals twice the current depth.*



FCC ID: ICLSM61

Techsonic Industries

This device complies with Part 15 of the FCC Rules.

Operation is subject to the following two conditions:

- (1) This device may not cause harmful interference and;
- (2) This device must accept any interference received, including interference that may cause undesired operation.

CAUTION: Changes or modifications not expressly approved by Techsonic Industries could void the users authority to operate the device.

Contact Humminbird

Your Humminbird accessory is designed for trouble-free operation and is backed by a one-year warranty. If you have any questions, contact our

Humminbird Customer Resource Center:

By Telephone (Monday - Friday 8:00 a.m. to 4:30 p.m. Central Standard Time):
334-687-0503

By e-mail (typically we respond to your e-mail within three business days):
custserv@techsonic.com

For direct shipping, our address is:
Techsonic Industries, Inc.
Service Department
108 Maple Lane
Eufaula, AL 36027 USA

