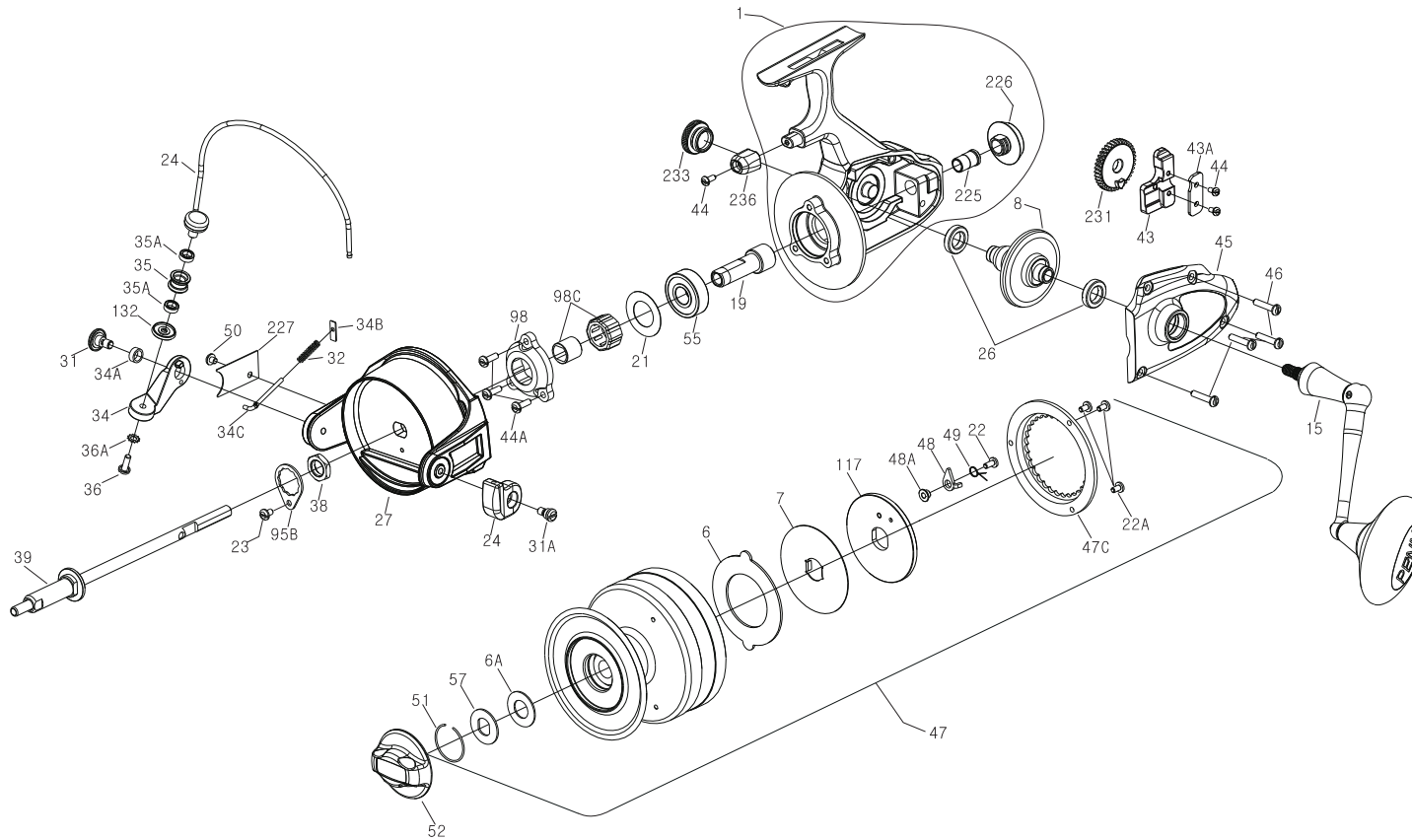




PARTS LIST FOR MODEL 950SSM



<u>KEY NO.</u>	<u>PART NO</u>	<u>DESCRIPTION</u>
1	001 950M	Housing Assembly
6	006 950M	Drag Washer HT-100
6A	006 060	Drag Washer HT-100
7	007 950M	Metal Drag Washer
8	008N9500	Main Gear
15	015N9500M	Handle Assembly
19	019 950M	Pinion
21	021 750M	Bearing Cover
22	022 9500	Spool Click Screw
22A	022A9500	Drag Cover Screw(3 req.)
23	023 750	Locking Plate Screw
24	024 950M	Bail Assembly
26	026A2.5FR	Ball Bearing (2req.)
27	027 950M	Rotor Assembly
31	031 750M	Bail Arm Screw
31A	031A550G	Bail Cam Screw
32	032 950M	Bail Spring
34	034 950M	Bail Arm
34A	034A750	Bail Arm Bushing
34B	034B750M	Pivot Plate
34C	034C950M	Pivot Arm
35	035 950M	Line Roller
35A	035A950M	Ball Bearing(2 req.)
36	036 750	Bail Stud Screw
36A	036A750	Lock Washer
38	038 9500	Rotor Nut
39	039 950M	Spool Shaft
43	043 950M	Crosswind Block
43A	043A750	Crosswind Plate
44	044 750	Screw(3 req.)
44A	044 710	Screw(3 req.)
45	045 950M	Housing Cover
46	046 9500	Cover Screw(4 req.)
47	047 950M	Spool Assembly
47C	047C9500	Drag Cover
48	048 9500	Click Tongue
48A	048A9500	Click Tongue Washer
49	049 9500	Click Tongue Spring
50	050 712	Screw
51	051 704	Retaining Ring
52	052 750	Drag Knob Assembly
55	055 050	Ball Bearing
57	057 704	Drag Washer,Keyed
95B	095B950M	Rotor Locking Plate
98	098 750M	Clutch Housing
98C	098C950M	Clutch Bearing and Sleeve
117	117 950M	Drive Plate
132	132 950M	Roller Washer
225	225 9500	Spool Shaft Bushing
226	226 950M	Rear Cap
227	227 950M	Bail Spring Cover
231	231 950M	Crosswind Gear
233	233 550G	Bearing Cover
236	236 750M	Trip Bumper