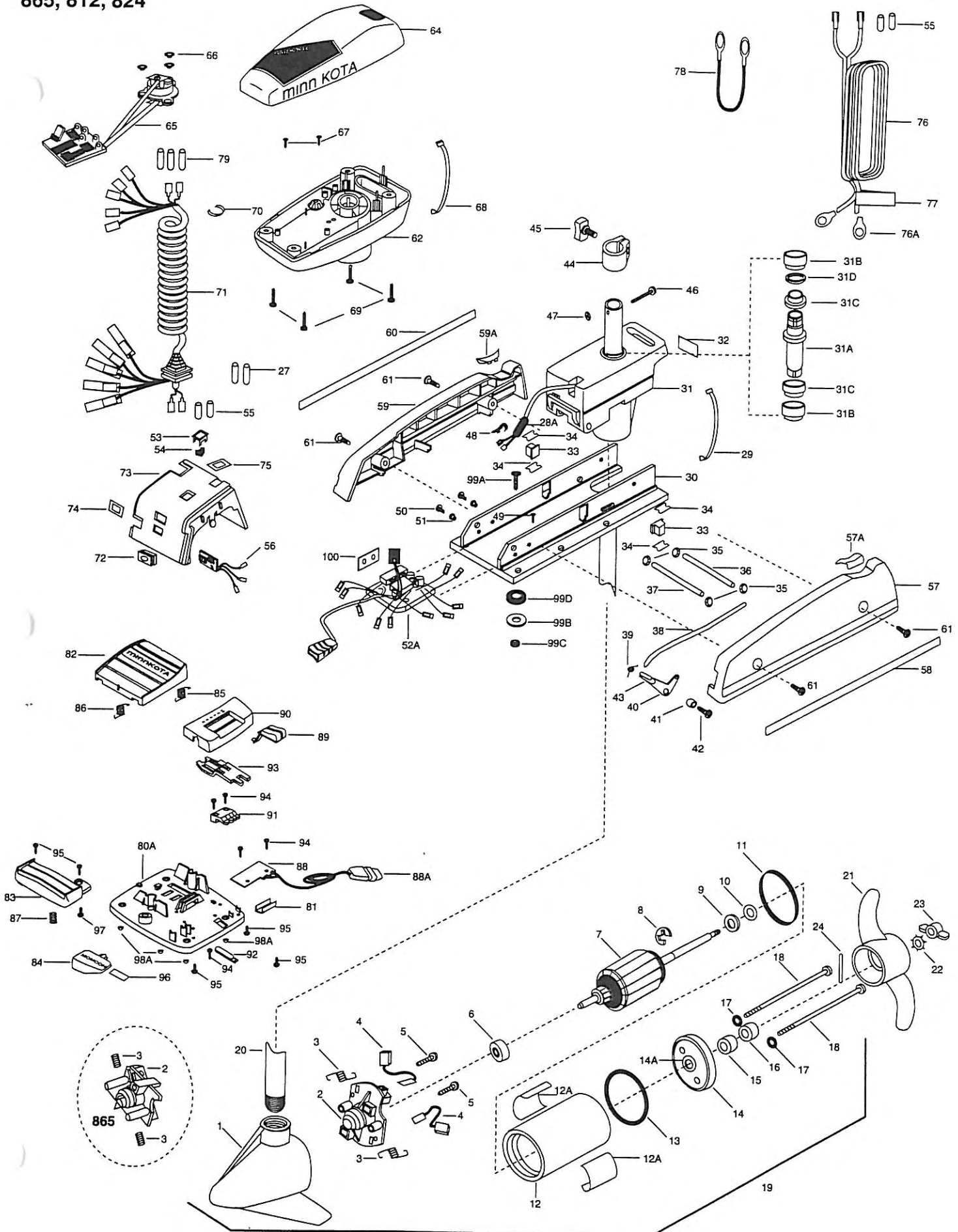


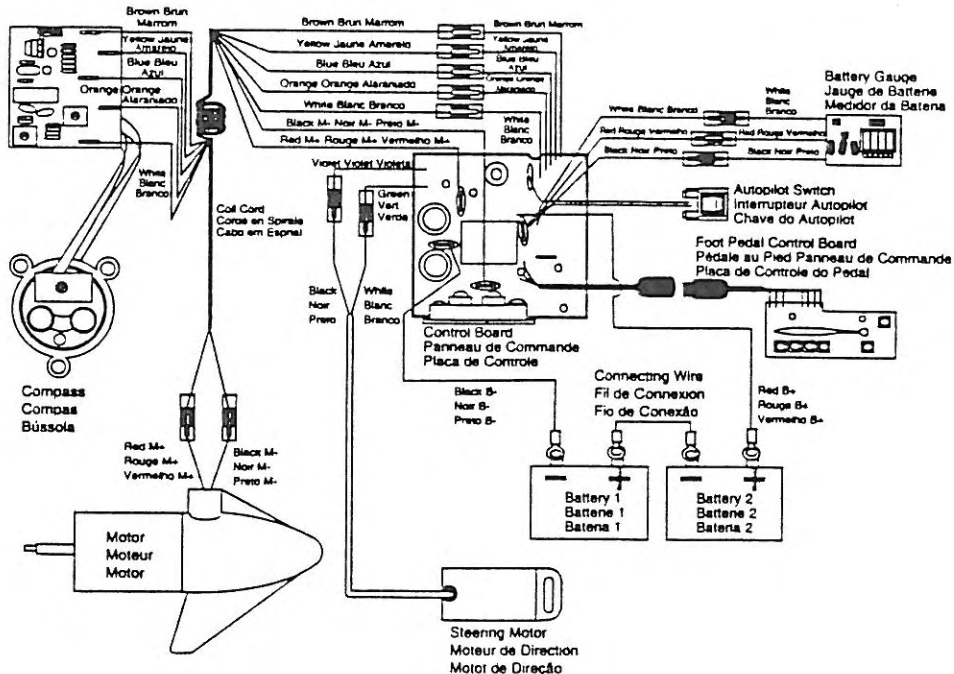
865, 812, 824



1	406023	FRONT ENDBELL 812, 824	*29	2256300	TIE WRAP 5"—ORDER 28	66	2302960	GROMMET-COMPASS (3 REQ'D)
	406022	FRONT ENDBELL 865	*30	2301912	BASE MACHINED	67	2332103	SCREW-6-20 X 3/8 (2 REQ'D)
2	406403	BRUSH PLATE ASSEMBLY 812, 824	31	2301834	DRIVE HOUSING	68	2256300	TIE WRAP-5.5"-BLACK
	406404	BRUSH PLATE ASSEMBLY 865	31A	2032001	DRIVE HOUSING SLEEVE	69	2372100	SCREW-8-18 X 5/8 (4 REQ'D)
3	406082	BRUSH SPRING (2 REQ'D) 812, 824	*31B	2307302	BUSHING- INSIDE (2 REQ'D) ORDER 31E	70	2303002	PIG RING
	406081	BRUSH SPRING (2 REQ'D) 865	*31C	2307303	BUSHING- OUTSIDE (2 REQ'D) ORDER 31E	71	2301220	COIL CORD-W/STRAIN RELIEF 42"
4	406071	BRUSH ASSEMBLY (2 REQ'D) 812, 824	*31D	2304600	O-RING ORDER 31E		2301221	COIL CORD-W/STRAIN RELIEF 48"
	406072	BRUSH ASSEMBLY (2 REQ'D) 865	31E	2887301	BUSHING KIT (INCLUDES 31B, 31C, 31D)		2301222	COIL CORD-W/STRAIN RELIEF 54"
5	406342	BRUSH PLATE SCREW (2 REQ'D) 812, 824	31F	2302221	DRIVE HOUSING GEAR	72	2302920	GROMMET-LEADWIRE
	406341	BRUSH PLATE SCREW (2 REQ'D) 865	*31G	2307030	DRIVE HOUSING MOTOR ASSEMBLY	73	2306531	COVER-SPD CONTROL
6	406010	BALL BEARING	32	2305519	DECAL-STEERING MOTOR	74	2306605	DECAL BATTERY GAUGE
7	406208	ARMATURE ASSEMBLY 812	33	2305110	PAD-PIVOT SUPPORT (4 REQ'D)	75	2305557	DECAL-ON/OFF 812
	406207	ARMATURE ASSEMBLY 824	34	2305100	PAD-PIVOT (2 REQ'D)		2305558	DECAL-ON/OFF 824
	405204	ARMATURE ASSEMBLY 865	35	2013100	NUT-SPEED (4 REQ'D)		2305554	DECAL-ON/OFF 865
8	405300	E-RING	36	2300500	PIN-LATCH	76	2090601	LEADWIRE 10GA 44" ASSEMBLY
9	406170	THRUST WASHER- STEEL	37	2300510	PIN-PIVOT	76A	2090700	RING TERMINAL (2 REQ'D)
10	405171	THRUST WASHER- NYLATRON	38	2303610	ROD-RELEASE	77	2305800	DECAL LEADWIRE-BATTERY
11	406490	GASKET 812, 824	39	2302700	SPRING-RELEASE LEVER	78	2090620	CONNECTOR CABLE- 24 VOLT (824 ONLY)
	406480	GASKET 865	40	2303710	LEVER-RELEASE	79	2065400	WIRE INSULATOR-LGE 1-3/4 (3 REQ'D)
12	409253	CENTER SECTION W/MAGNETS 812, 824	41	2301700	SPACER-RELEASE LEVER	80	2994700	FOOT PEDAL ASSY- (INCLUDES ITEMS 80-97)
	405257	CENTER SECTION W/MAGNETS 865	42	2303430	SCREW- 1/4-20 X 5/8	80A	2304510	FOOT PEDAL-BASE
12A	2006605	DECAL GOLD (2 REQ'D) 812, 824	43	2300101	RELEASE-KNOB	81	2308500	WEAR PLATE
	2006606	DECAL RED (2 REQ'D) 865	44	2031521	COLLAR- DRIVE W/INSERT	82	2304516	FOOT PEDAL-UPPER
13	406470	O-RING 812, 824	45	2011365	SCREW-COLLAR W/KNOB	83	2304520	FOOT PEDAL-LOWER
	406460	O-RING 865	46	2332102	SCREW-1O-24 X 1-3/4	84	2307210	LEVER MOM/CON
14	406033	REAR ENDBELL 812, 824	47	2333101	NUT-HEX	85	2302730	SPRING-LONG-UPPER PEDAL
	406032	REAR ENDBELL 865	48	2302935	STRAIN RELIEF-DRIVE HOUSING	86	2302731	SPRING-SHORT-UPPER PEDAL
14A	406600	FLANGE BEARING (SERVICE CENTER ONLY)	49	2332100	SCREW-8-32 X 3/8	87	2302732	SPRING-LOWER PEDAL
15	406461	SEAL	50	2332101	SCREW-8-32 X 1/2 (2 REQ'D)	88	2304012	CONTROL BOARD ASSEMBLY-FOOT PEDAL
16	406471	SEAL- CUP	51	2301710	WASHER-INSUL. TRANSFER BAR (2 REQ'D)	*88A	2300730	CONTROL CORD ASSEMBLY
17	405462	O-RING —THRU BOLT (2 REQ'D) 812, 824	52	2774015	CNTRL BRD ASSEMBLY 812, 865 (52A-54,100)	89	2300120	KNOB-SPEED SELECTOR
	401462	O-RING —THRU BOLT (2 REQ'D) 865	*52A	2304015	CONTROL BOARD 812, 865 ORDER 52	90	2300121	HOUSING-SPEED SELECTOR
18	406353	THRU BOLT (2 REQ'D) 812, 824	52	2774017	CNTRL BRD ASSY 824 (INCLUDES 52A-54,100)	91	2302840	ACTUATOR-BOARD
	405352	THRU BOLT (2 REQ'D) 865	*52A	2304017	CONTROL BOARD 824 ORDER 52	92	2302841	ACTUATOR-MOM/CON
19	2099051	MOTOR ASSEMBLY 812- 42", 48"	53	2304072	BEZEL-SWITCH	93	2302842	ACTUATOR-STEERING )
	2099052	MOTOR ASSEMBLY 812- 54"	54	2304073	SWITCH-ROCKER	94	2302100	SCREW-6-20 X 1/2 (5 REQ'D)
	2099056	MOTOR ASSEMBLY 824	55	2305400	SHRINK TUBE-3/8 OD (4 REQ'D)	95	2372100	SCREW-8-18 X 5/8 (5 REQ'D)
	2069026	MOTOR ASSEMBLY 865-42", 48"	56	2034031	BATTERY METER-ELECT 12V 812, 865	96	2266610	DECAL-CON/MOM LEVER
	2069027	MOTOR ASSEMBLY 865-54"		2034032	BATTERY METER-ELECT 24V 824	97	2335130	BUMPER- ACTUATOR
20	2032053	TUBE 42"	57	2993801	SIDEPLATE (LEFT) W/REST PAD	98	2994807	BAG ASSEMBLY- (RUBBER BUMPERS)
	2032054	TUBE 48"	57A	2305150	REST PAD	*98A	2305131	RUBBER BUMPER (4 REQ'D)
	2032055	TUBE 54"	58	2305565	DECAL SIDEPLATE-LEFT 812, 865	99	2994803	BAG ASSY- (BOLTS, NUTS, WASHERS)
21	2091150	PROPELLER (W.WEDGE) 812, 824		2305555	DECAL SIDEPLATE-LEFT 865	*99A	2153501	BOLT-MOUNTING- STGD (4 REQ'D)
	2061125	PROPELLER (W.WEDGE) 865	59	2993901	SIDEPLATE (RIGHT) W/REST PAD	*99B	2151726	WASHER-STANDARD 5/16 (4 REQ'D)
22	2051700	LOCKWASHER-PROP	59A	2305150	REST PAD	*99C	2153100	NUT-MOUNTING (4 REQ'D) (4 REQ'D)
23	2053100	NUT-PROP	60	2305566	DECAL SIDEPLATE-RIGHT 812, 824	*99D	2301720	WASHER-MOUNTING RUBBER (6 REQ'D)
24	2092600	PIN-DRIVE		2305556	DECAL SIDEPLATE-RIGHT 865	100	2305141	INSULATING PAD 812, 865
25	2990318	WIRE EXTENSION-BLACK (54" 824 ONLY)	61	2303430	SCREW-1/4-20 X 5/8 (4 REQ'D)		2315105	INSULATING PAD 824
26	2990319	WIRE EXTENSION-RED (54" 824 ONLY)	62	2302511	CONTROL BOX			
27	2375400	SHRINK TUBE-1/4 X 1-3/4 (2 REQ'D 54" 824)	64	2300212	CONTROL BOX COVER 812,824			
28	2884079	FILTER ASSEMBLY (INCLUDES 28A, 29)		2300211	CONTROL BOX COVER 865			
*28A	2304079	RF FILTER—ORDER 28	65	2994000	CONTROL BOARD- COMPASS			

\* This item is part of an assembly. This item cannot be sold separately due to machining and /or assembly that is required.

Sensor Board  
 Panneau de Détection  
 Placa de Sensores



865, 812

