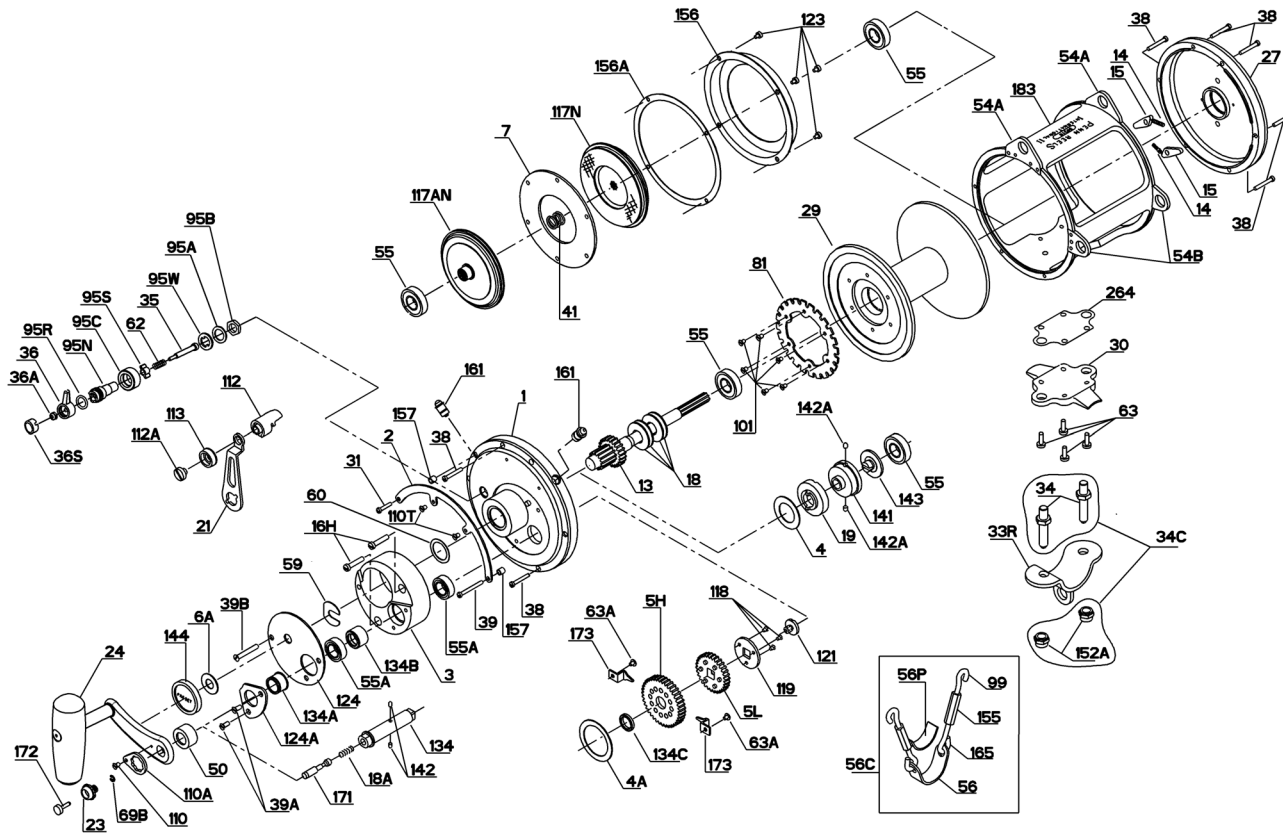




**PARTS LIST FOR MODELS 80ST AND 80STW**



KEY NO.	DESCRIPTION
1	R. S. Plate Assembly
2	Quadrant Ring
3	Bridge
4	Cam Thrust Washer
4A	Gear Thrust Washer
5H	Main Gear High-Speed
5L	Main Gear Low-Speed
6A	Spacer Washer
7	Metal Drag Washer
13	Pinion Gear
14	Dog Spring (2 req.)
15	Dog (2 req.)
16H	Hidden Bridge Screws (2 req.)
18	Disc Clutch Spring (4 req.)
18A	Gear Stud Spring
19	Eccentric Cam
21	Eccentric Lever
23	Handle Screw
24	Handle Complete
27	L.S. Plate Assembly
29	Spool
30	Stand
31	Short Quadrant Screw

80ST PART NO.	80STW PART NO.
001N080ST	001N080ST
002 080	002 080
003 080ST	003 080ST
004 080	004 080
004 130	004 130
005 080HST	005 080HST
005 080LST	005 080LST
006 155	006 155
007A080	007A080
013 080ST	013 080STW
049 710	049 710
015 130	015 130
016T130	016T130
018 080W	018 080W
018 349	018 349
019H080	019H080
021 080ST	021 080ST
023 080ST	023 080ST
024B80ST	024B80ST
027 80ST	027 80ST
029L080S	029L080SW
030 080S	030 080S
031T020	031T020

KEY NO.	DESCRIPTION	80ST PART NO.	80STW PART NO.
33R	Rod Clamp	033 130ST	033 130ST
34	Clamp Screw (2 req.)	034 080T	034 080T
34C	Rod Clamp Screw w/ Nut	034C080T	034C080T
35	Click Tongue	035 080ST	035 080ST
36	Click Button	036 080ST	036 080ST
36A	Click Button Nut	036 700	036 700
36S	Click Button Cap	036S080ST	036S080ST
38	Frame Screw	038T050	038T050
39	Long Quadrant Screw	039T050	039T050
39A	Cover Screws (2 req.)	039A080S	039A080S
39B	Cover Screw	039 080ST	039 080ST
41	L. S. Bearing Spring	041 050	041 050
50	Shield	050 080ST	050 080ST
54A	Top Harness Lug (2 req.)	054A080S	054A080S
54B	Harness Lug (2 req.)	054B080S	054B080S
55	Ball Bearing (4 req.)	055 080	055 080
55A	Ball Bearing (2 req.)	055 080ST	055 080ST
56	Rod Brace	056 116	056 116
56C	Rod Brace Assembly (Complete)	056C080ST	056C080ST
59	Slotted Washer	059 050	059 050
60	Backing Washer	060 050	060 050
62	Click Spring	062 080ST	062 080ST
63	Stand Screw (4 req.)	063 030T	063 030T
63A	Hold Down Screw (2 req.)	063 349	063 349
69B	Retaining Ring	069B050	069B050
81	Ratchet	081 080S	081 080S
95A	Click Bushing Washer	095A020	095A020
95B	Click Bushing Nut	038 710	038 710
95C	Click Adjustment Ring	095C080ST	095C080ST
95N	Click Tongue Bushing	095N080ST	095N080ST
95R	Click O-Ring	095R080ST	095R080ST
95S	Click Spring Slider	095S080ST	095S080ST
95W	Eared Spring Washer	095W080ST	095W080ST
99	Harness Lug Screw Hook (Upper) (2 req.)	099 116	099 116
101	Ratchet Screw (6 req.)	101 030	101 030
110	Handle Lock Screw	110 050	110 050
110A	Handle Locking Plate	110A050	110A050
110T	Quadrant Screw (2 req.)	110T050	110T050
112	Eccentric Knob	112 050	112 050
112A	Eccentric Knob Screw	112A050	112A050
113	Eccentric Lever Cap	113 050	113 050
117N	Drive Plate (Outer)	117N080ST	117N080ST
117AN	Drive Plate (Inner)	117AN080T	117AN080T
118	Coupling Plate Screw (3 req.)	101 080ST	101 080ST
119	Coupling Plate	119 080ST	119 080ST
121	Gear Stud Screw	121 080ST	121 080ST
123	Drag Cover Screw (4 req.)	123 50	123 50
124	Bridge Cover	124 080ST	124 080ST
*	Cam Housing	125 080ST	125 080ST
124A	Bearing Cover	124A080ST	124A080ST
134	Gear Stud	134N080ST	134N080ST
134A	Bushing	134A080ST	134A080ST
134B	Grooved Spacer Bushing	134B080ST	134B080ST
134C	Gear Bushing	134C080ST	134C080ST
141	Cam Follower	141 080	141 080
142	Gear Stud Pin (2 req.)	142 050	142 050
142A	Cam Follower Pins (2 req.)	142 080ST	142 080ST
143	Adjusting Screw	143 080	143 080
144	Preset Knob	144 050	144 050
152A	Rod Clamp Acorn Nut (2 req.)	152A 080T	152A 080T
155	Turnbuckle (2 req.)	155 116	155 116
156	Drag Cover	156 080S	156 080S
156A	Drag Cover Seal	156A080	156A080
157	Quadrant Spacer Bushing (2 req.)	157 050	157 050
161	Locating Pin Bushing (2 req.)	161C070	161C070
165	Harness Lug Screw Hook (Lower) (2 req.)	165 116	165 116
171	Plunger	171 80ST	171 80ST
172	Plunger Cap	172N080S	172N080S
173	Gear Retainer	173 050S	173 050S
183	Tube Frame	183 080ST	183 080STW
264	Stand Gasket	264 080T	264 080T

\*Not Shown